



AYEYARWADDY
DEVELOPMENT
PUBLIC CO., LTD

PROJECT MILESTONES
AYEYARWADDY DEVELOPMENT PUBLIC CO., LTD.

BETTER AYEYARWADDY, GREATER MYANMAR



PATHEINGYI
INDUSTRIAL CITY

BETTER AYEYARWADDY, GREATER MYANMAR



Founder

Public Shareholders



Shareholders

Developer

Project Brand

BACKGROUND INFORMATION ON FOUNDER



Ayeaywaddy Holdings Co., Ltd



Agriculture



Banking & Finance



Healthcare



Property
Development & Real
Estate



Strategic Investments
& Partnerships

BACKGROUND INFORMATION ON FOUNDER

Agriculture Sector



Rice: Supply Chain Management, Milling & Exporting

Sri Trang Ayeyar Rubber Industry Co., Ltd

Palm Oil: Bulk Importing



Sri Trang Agro-
Industry Public
Company Limited:



Banking & Financial Sector



Ayeyarwaddy Farmers Development Bank - A Bank

A bank
Ayeyarwaddy Farmers Development Bank

BACKGROUND INFORMATION ON FOUNDER

Healthcare Sector



Thuka Saytanar Co., Ltd : Victoria Hospital



Healthcare Platform : Social Security Board Project

Property Development & Real Estate Sector



Rose Hill Luxury Residence

Y Complex Mix-Used Development Project

Pathein Industrial City Development

Real Estate & Construction
7-Aluminum & AYHT Construction



BACKGROUND INFORMATION ON FOUNDER

Strategic Investments & Partnerships



Energy & Power Projects

ICT & Telecommunication Projects

Strategic Partnerships



Marubeni



HORIZON
TELECOM
INTERNATIONAL

MSG MYANMAR
SAFETY
GLASS Co.,Ltd



SAMART



BETTER AYEYARWADDY, GREATER MYANMAR



MYANMAR

Union of Myanmar – Burma

Regions & States

The population of the regions and states of Myanmar by census years.

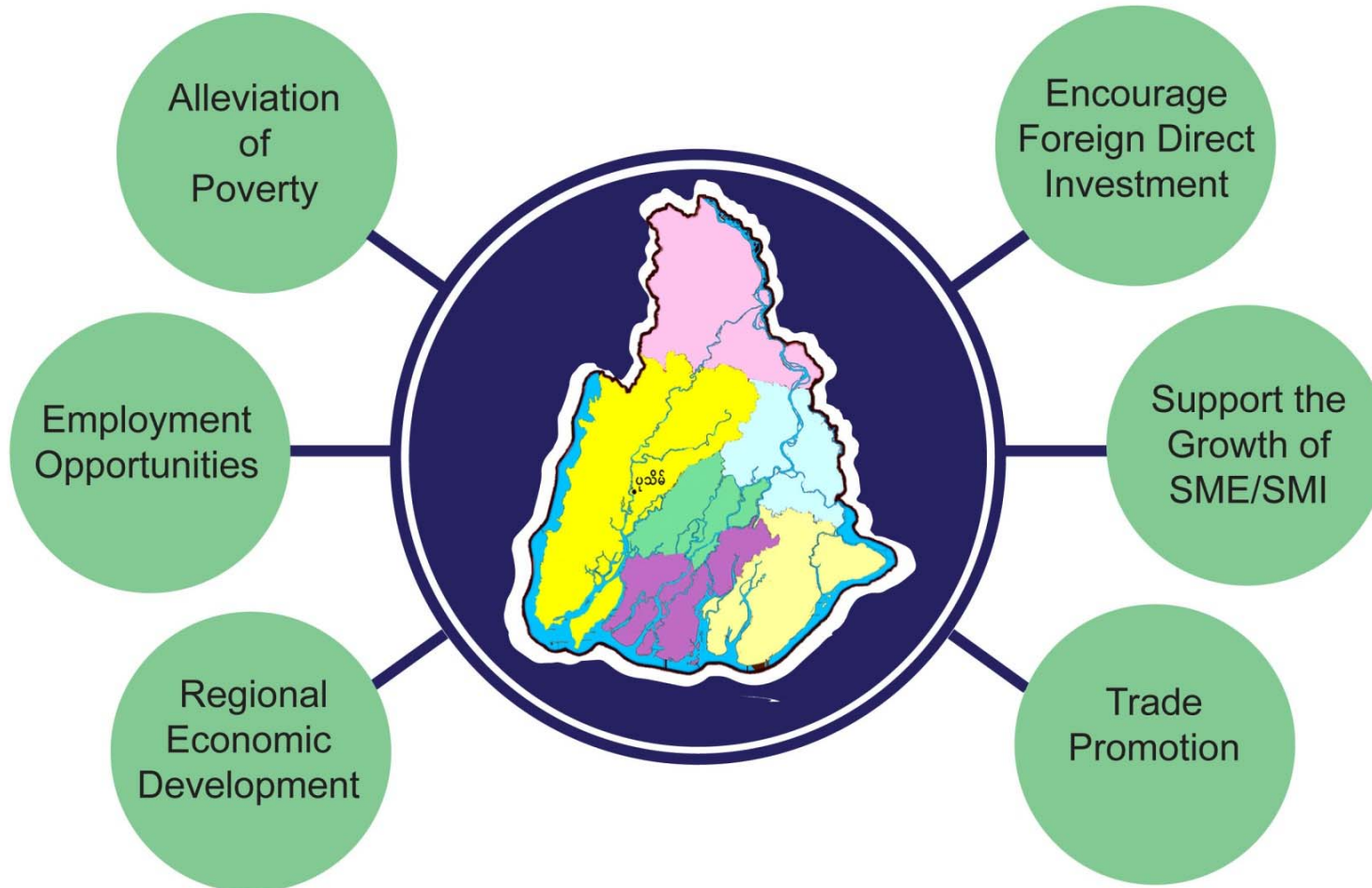
Name	Abbr.	Status	Area A-L (km ²)	Population	
				Census (Cf) 1983-03-31	Census (C) 2014-03-29
Ayeyarwady [Irrawaddy]	AYE	Reg	35,032	4,994,061	6,184,829
Bago	BAG	Reg	39,404	3,799,791	4,867,373
Chin	CHI	St	36,019	368,949	478,801
Kachin	KAC	St	89,042	904,794	1,689,441
Kayah	KYH	St	11,732	168,429	286,627
Kayin (Karen)	KYN	St	30,383	1,055,359	1,574,079
Magway (Magwe)	MAG	Reg	44,821	3,243,166	3,917,055
Mandalay	MAN	Reg	30,888	4,577,762	6,165,723
Mon	MON	St	12,297	1,680,157	2,054,393
Naypyitaw	NAY	UTerr	7,057	Mandalay	1,160,242
Rakhine (Arakan)	RAK	St	36,778	2,045,559	3,188,807
Sagaing	SAG	Reg	93,702	3,862,172	5,325,347
Shan	SHA	St	155,801	3,716,841	5,824,432
Tanintharyi (Tenasserim)	TAN	Reg	43,345	917,247	1,408,401
Yangon	YAN	Reg	10,277	3,973,626	7,360,703
Myanmar	MMR	Rep	676,577	35,307,919	51,486,253

SITE LOCATION & DOMESTIC BUSINESS OPERATION

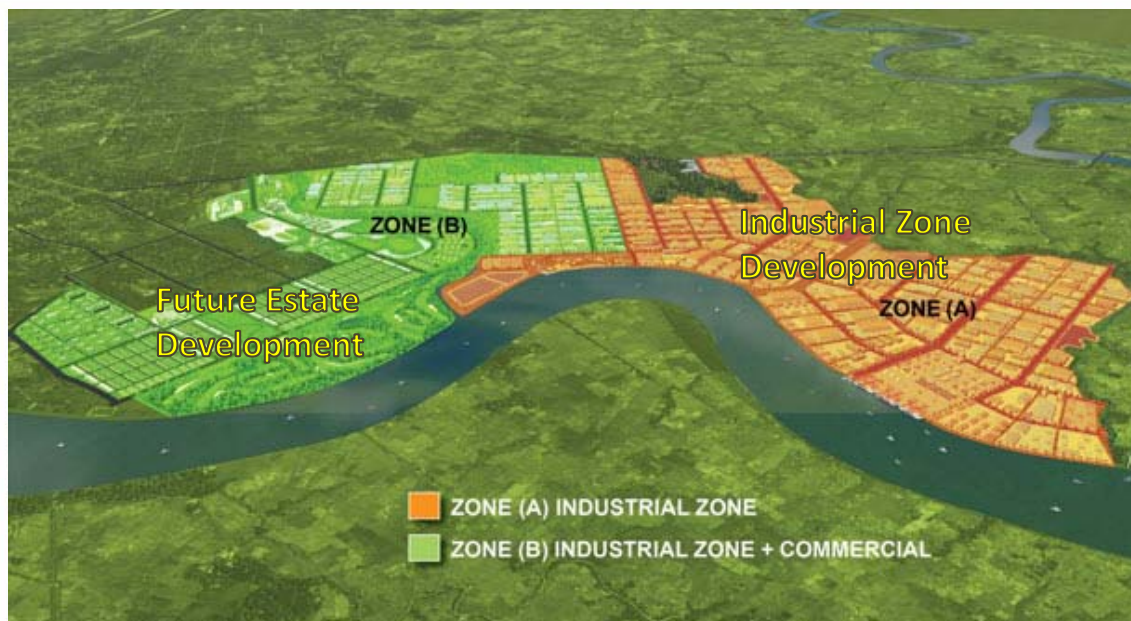


- Distance from YGN to Pathein : 188 km
- Rice Mill and Rice Processing Factories
- Downstream rice production Factories
- Bean, Corn, and Sesame Processing Factories
- Fishery cold storage and Processing Factories
- Garment Factories
- Forestry products and Processing Factories
- Agricultural and Farming Machinery Production Factory
- Electronic and Consumer products Factories
- Storage and Logistic Service Businesses

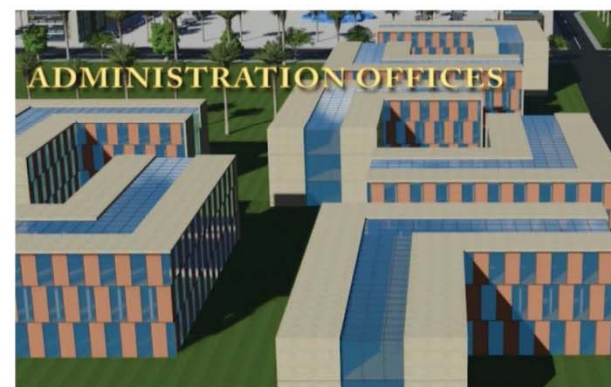
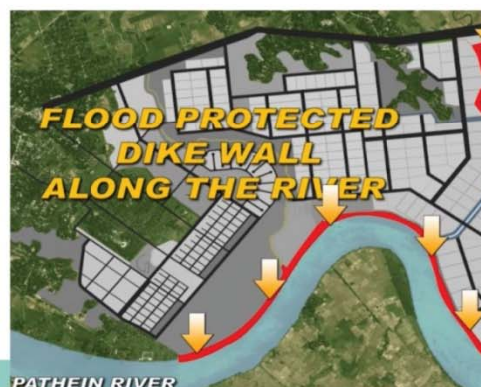
DEVELOPMENT OBJECTIVES



ABOUT THE PROJECT



- The Largest SME Industry Zone in Ayeyarwady Region
- Total Estimated Areas: 2,700 acres
- Include River Port that facilitate the direct Export and Import of Goods via International Markets
- PIC will contribute to the development of not only Ayeyarwady Region, but also economic development of Myanmar



TO MEET WITH INTERNATIONAL STANDARD



In 1978, TEAM was established by a group of Thai engineers. It has since taken part in many large-scale public and private projects. It is currently a core member of TEAM GROUP, a largest Thai-based consultancy in Thailand.

Feasibility Study &
Detail Design Planning



EIA/SIA

ACE is registered with the Myanmar Oil & Gas Enterprise (MOGE), Myanmar Investment Commission (MIC), and Ministry of Environmental Conservation and Forestry (MOCFAF) for carrying out Environmental Impact Assessment study in Myanmar.



Market
Research



Founded in 1995, Tractus Asia is a management consulting company focused on assisting foreign investors achieve success in Asia. Tractus is Latin for progress. As a strategy and operations management consulting firm, Tractus helps providing clients with the means to achieve their business goals in Asia.

Port Consulting



PROJECT OVERVIEW

- Infrastructure
- Dike Wall
- Sub-Station
- Drainage System
- Retention Ponds
- Waste Water Treatment and Water Treatment
- Resource Efficient Zone
- Reuse, Reduce, Recycle and Green Concept
- Solid Waste Disposal



PROJECT OVERVIEW

POWER SUPPLY PLAN



Medium (or) Long Term Plan
I. 50 MW from Government
II. 50 MW from Ranhill (LNG Terminal at PIC)
III. 30 MW from Aggreko Power (HFO)

Short Term Plan
I. 50 MW from Government - 66 kV Transmission line (12 miles away from PIC)
II. 26 MW from Aggreko Power (Diesel or HFO)
III. 26 MW from Andaman Capital Partners (LPG)
33 kV High Voltage Internal Distribution Line

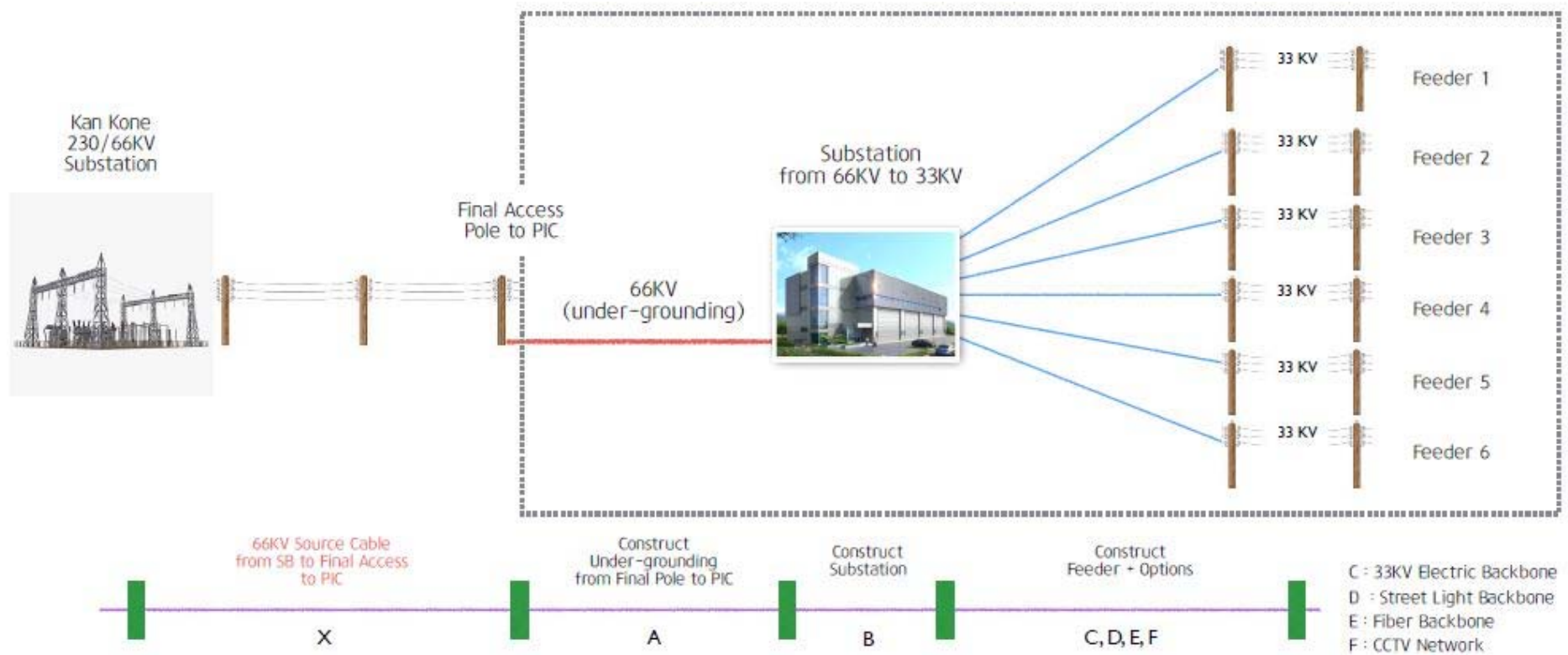
Temporary (Factories Construction Period)
2 MW from Government



PROJECT OVERVIEW

POWER SUPPLY PLAN

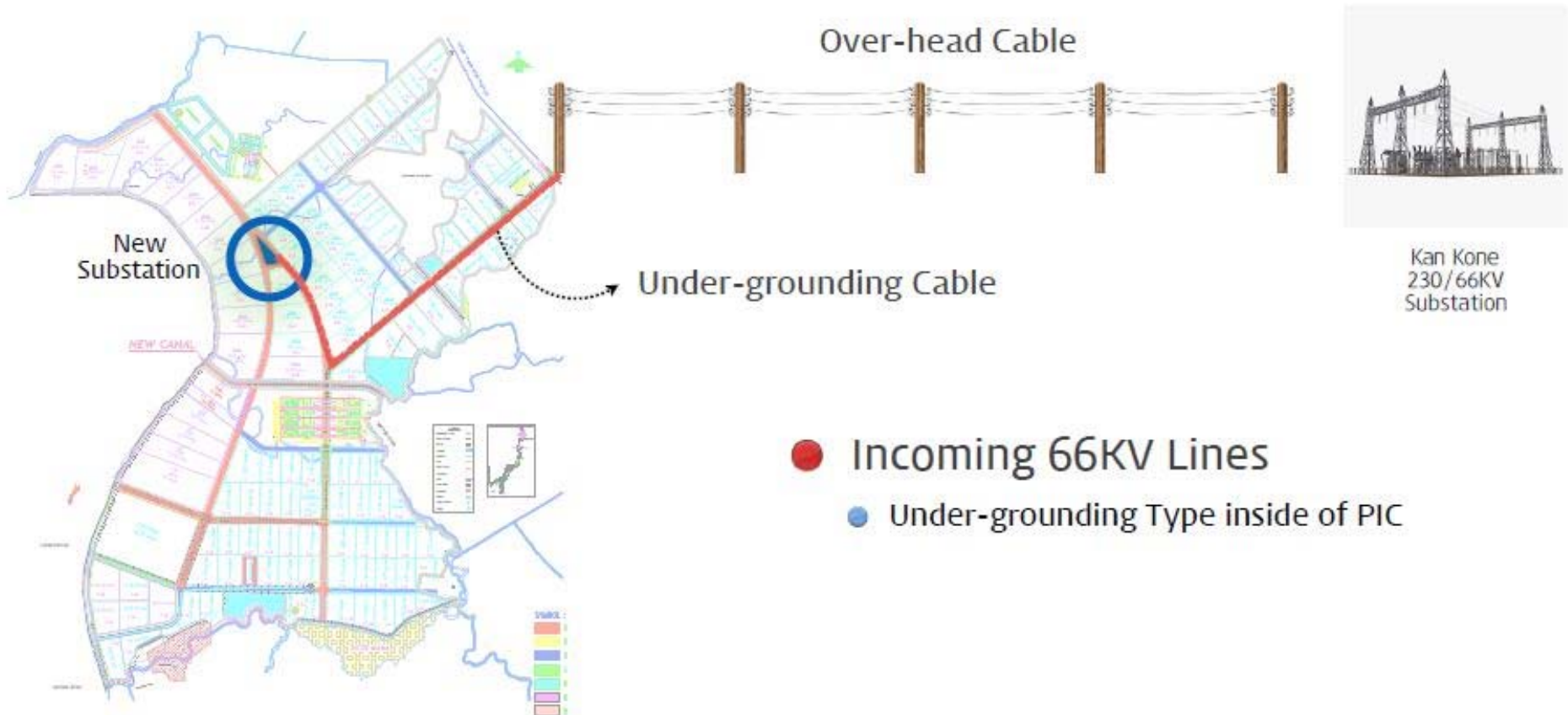
Power Transmission, Telecom and CCTV Security Systems



PROJECT OVERVIEW

POWER SUPPLY PLAN

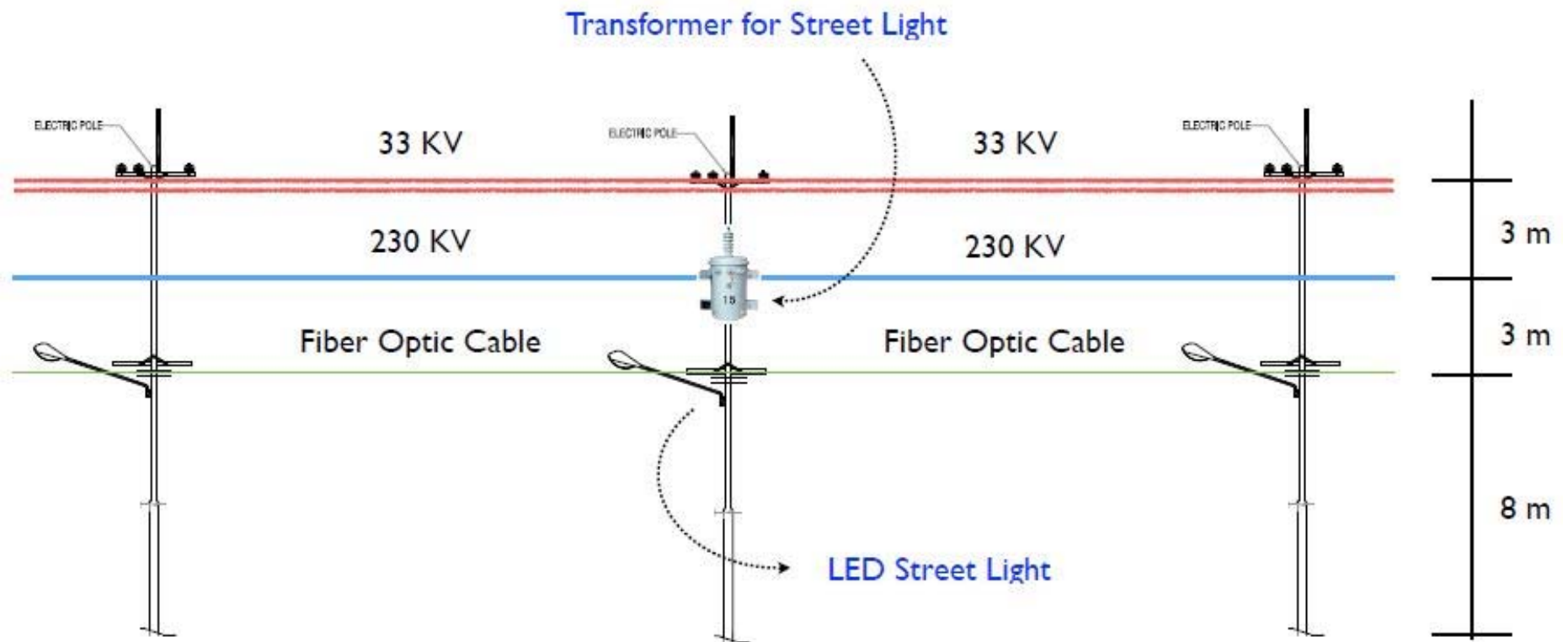
Power Transmission, Telecom and CCTV Security Systems



PROJECT OVERVIEW

POWER SUPPLY PLAN

Power Transmission, Telecom and CCTV Security Systems



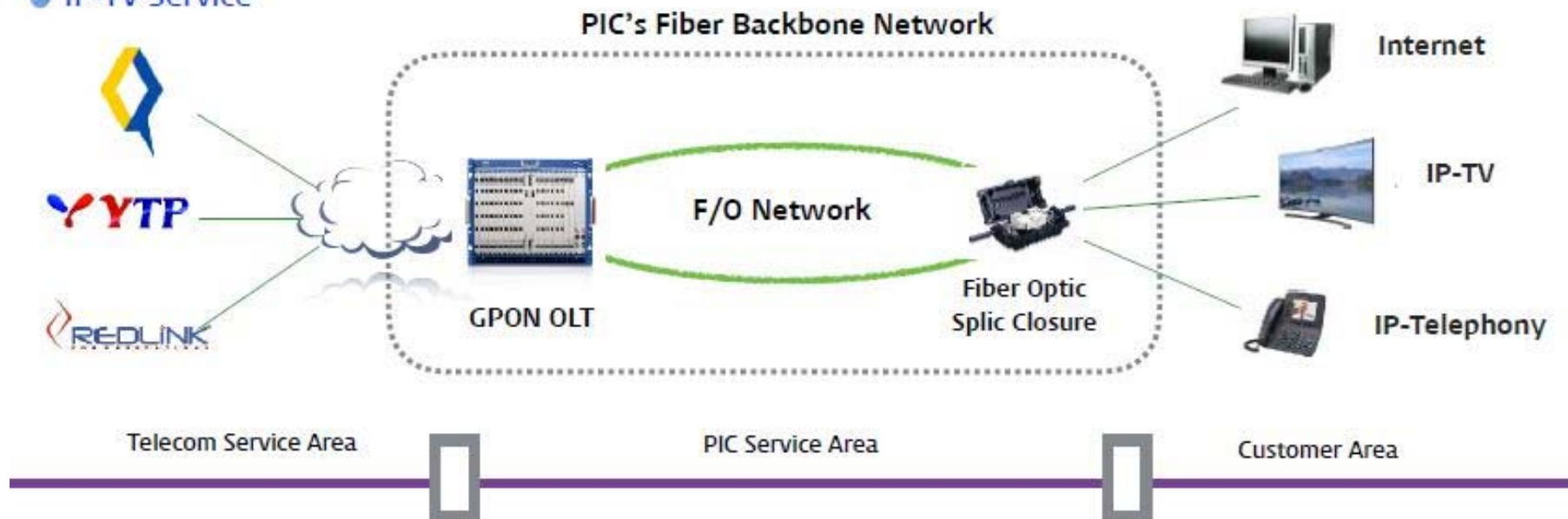
PROJECT OVERVIEW

POWER SUPPLY PLAN

Power Transmission, Telecom and CCTV Security Systems

One-stop Service to “Tenants” for communication services

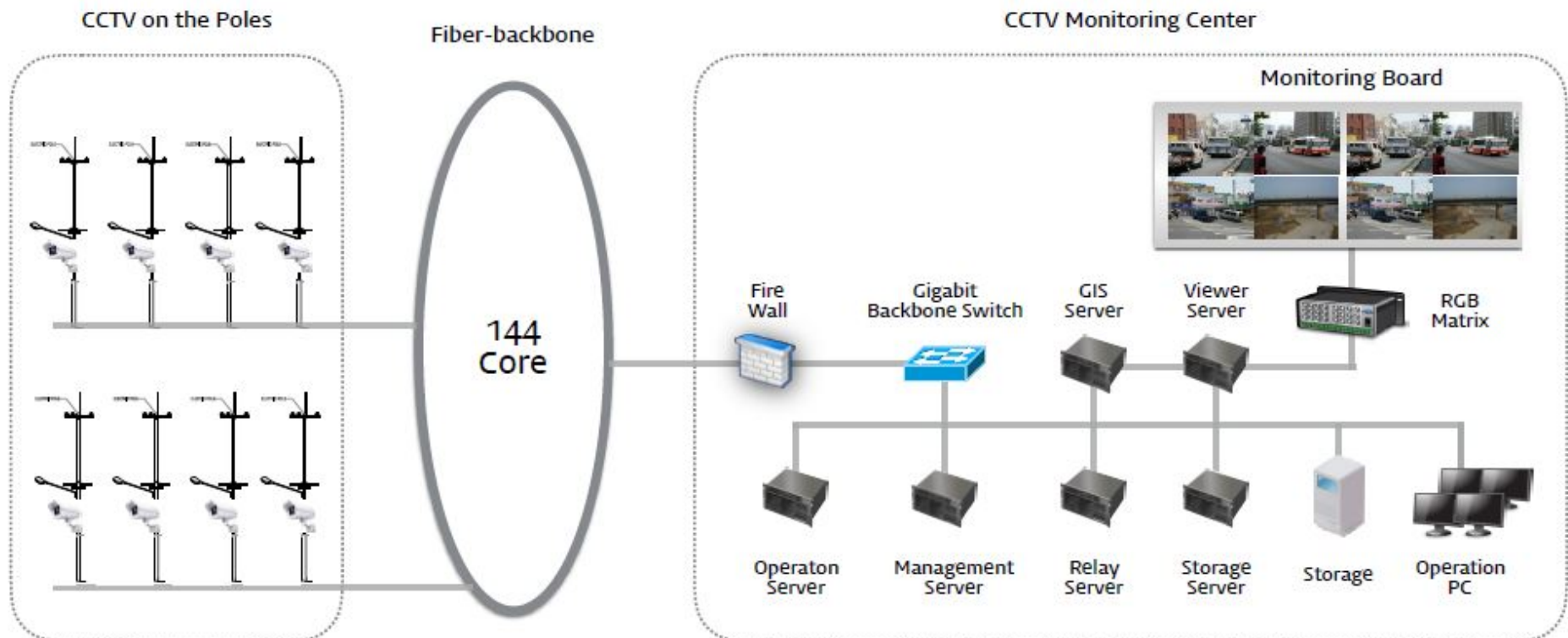
- High Speed Internet Service
- IP-Telephony Service
- IP-TV Service



PROJECT OVERVIEW

POWER SUPPLY PLAN

Power Transmission, Telecom and CCTV Security Systems



PROJECT OVERVIEW

POWER SUPPLY PLAN

Power Transmission, Telecom and CCTV Security Systems

Long Distance Monitoring

- 20X Optical Zoom (4.45 ~ 89 Focus Length)
- 8X Digital Zoom



Monitoring in Low light level

- Color mode : 1.5 lux
- B/W mode : 0 lux (IR Red ON)



Operation Temperature

- Temperature : -50° ~ $+55^{\circ}$
- Humidity : Less than 100% RH
- IP66



Digital Image Stabilization



DIS : OFF

DIS : ON

PROJECT OVERVIEW

PORT / LOGISTICS SERVICE

🚢 Multi-Purpose Port (MPP)

🚢 Trucking Service

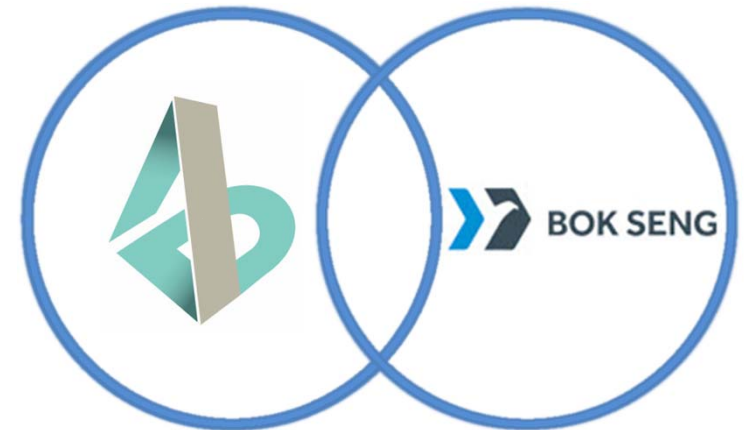
🚢 Warehousing Service

🚢 Sea Freight Service (LCT, tugs
and barges) for Local &
International Transport

🚢 One-Stop Service for Import &
Export

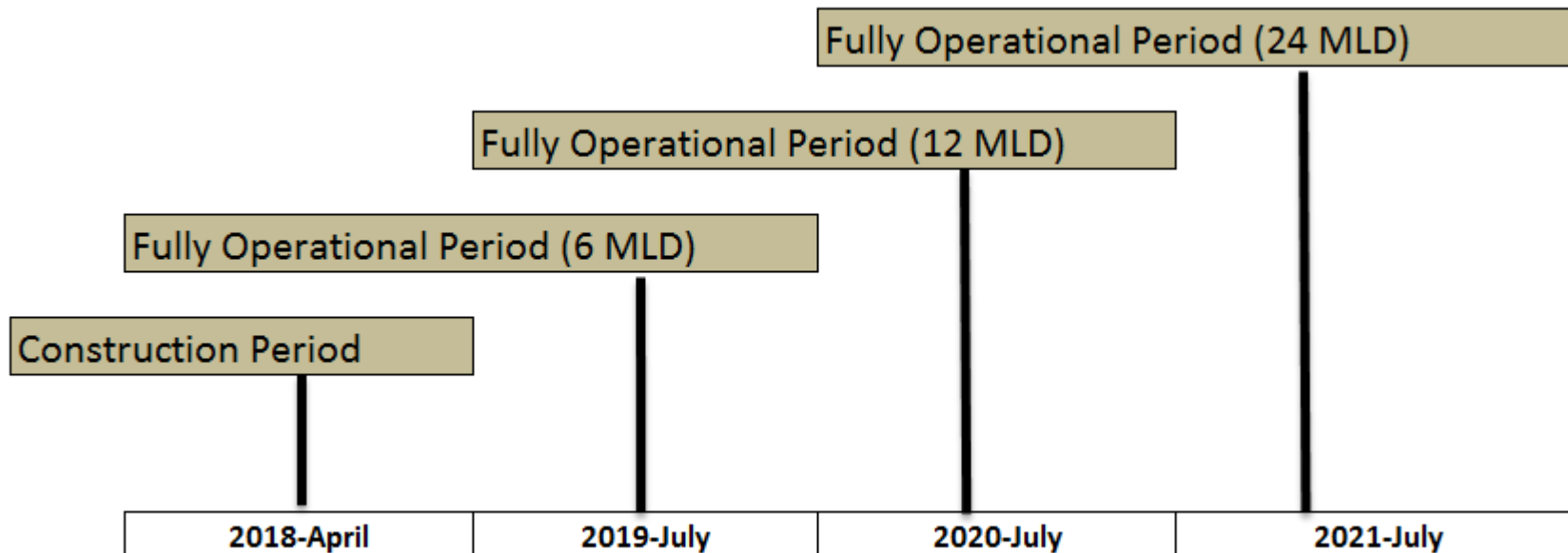
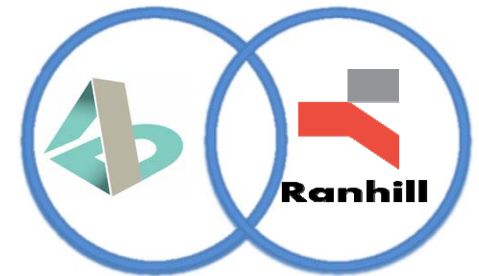
🚢 Logistics Service in PIC and all
over Myanmar

🚢 Customs Clearance



PROJECT OVERVIEW

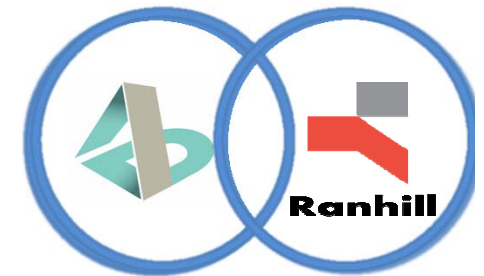
WATER / WASTE WATER TREATMENT



PROJECT OVERVIEW

Design Raw Water & Treated Water Quality

Parameters	Unit	Raw Water	Compliance
pH		6.6 – 7.6	6.6 – 8.5
Colour	TCU	49.0	15.0
Total Hardness, CaCO ₃	mg/L	75.2	500
Turbidity	NTU	123.6	5.0
Iron (Fe)	mg/L	1.8	0.3
Manganese (Mn)	mg/L	0.3	0.05
Sulphate (as SO ₄)	mg/L	8.4	200
Chlorine	mg/L	15.0	250
Total Solids	mg/L	253.4	1500
Dissolved Solids	mg/L	106.2	1000



Note: Based on the World Health Organization (WHO) Supply Water Standard.

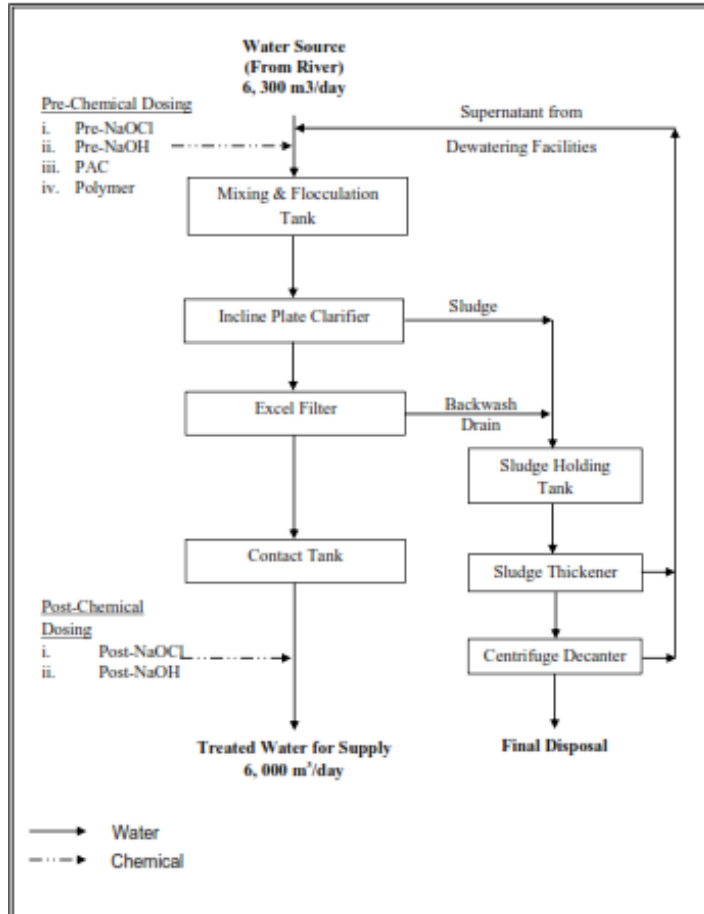
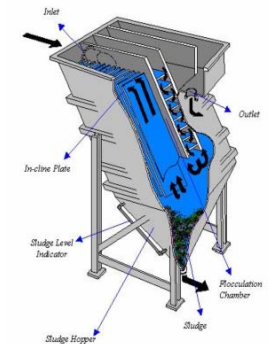
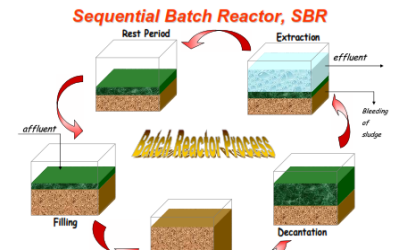
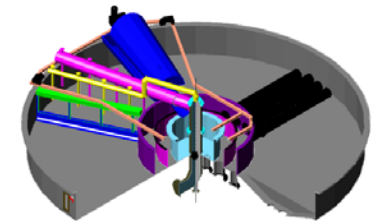
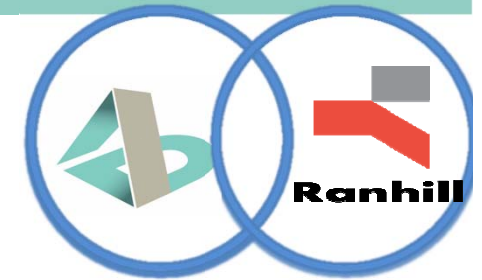
Design Raw Effluent & Discharge Standard Quality

Parameters	Unit	Raw Water	Compliance
pH		5.5 – 9.0	5.5 – 9.0
BOD	mg/L	≤ 500	≤ 20
COD	mg/L	≤ 750	≤ 120
Suspended Solids, SS	mg/L	≤ 200	≤ 50
Total Dissolved Solids, TDS	mg/L	≤ 3000	≤ 3000
Total Kjeldal Nitrogen	mg/L	≤ 100	≤ 100
Oil and Grease	mg/L	≤ 10	≤ 5

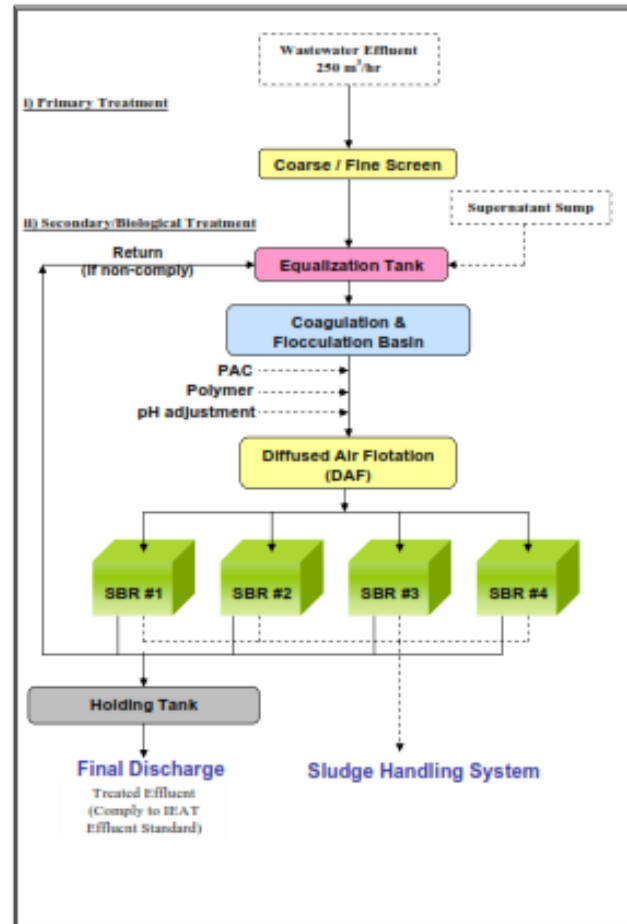
Note: Based on the IEAT 2011, Effluent Standard.

PROJECT OVERVIEW

Treatment Process Block Diagram



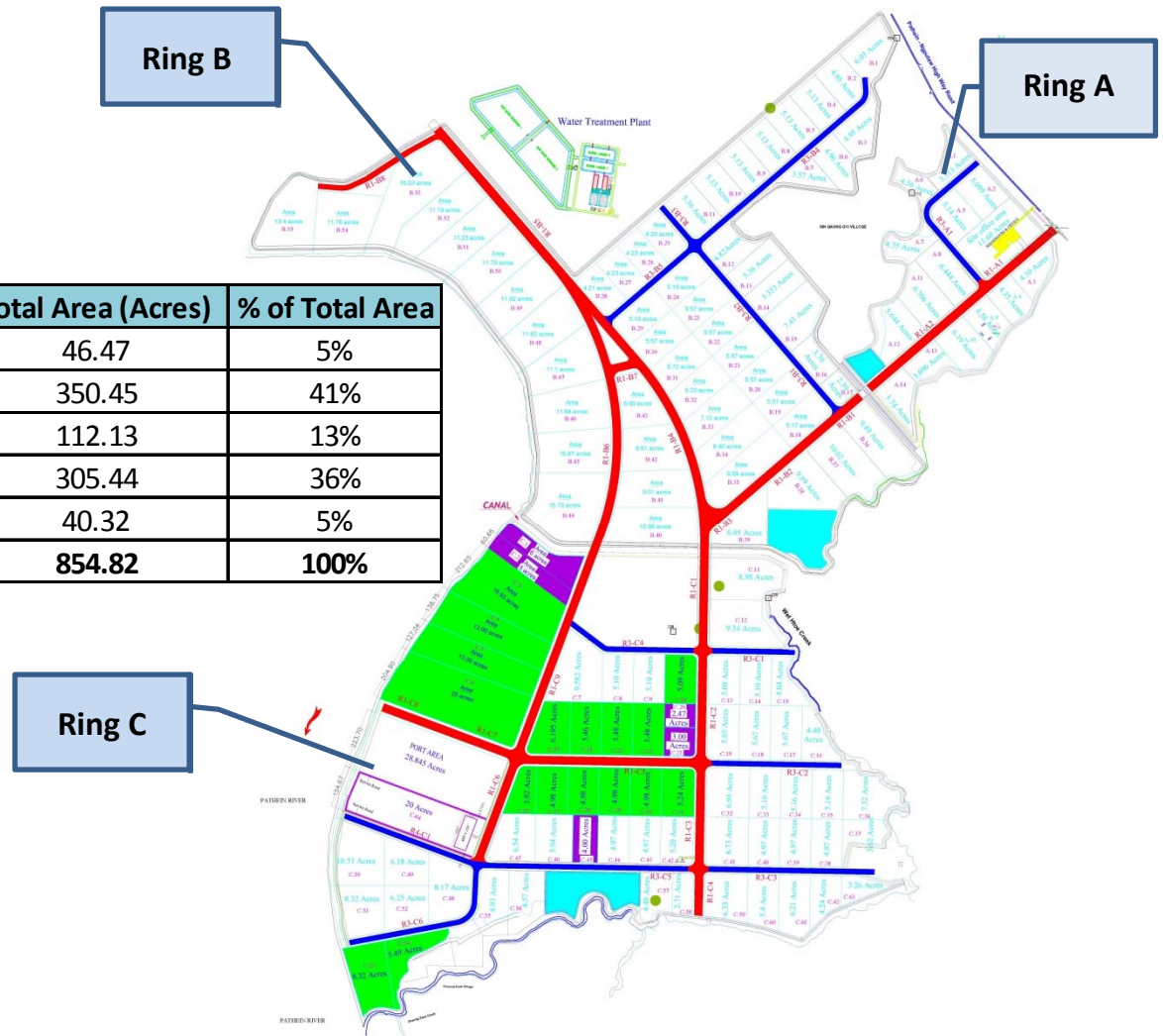
Water Treatment Plant



Wastewater Treatment Plant

Plot Size Ranges of Zone A (Ring A + B + C)

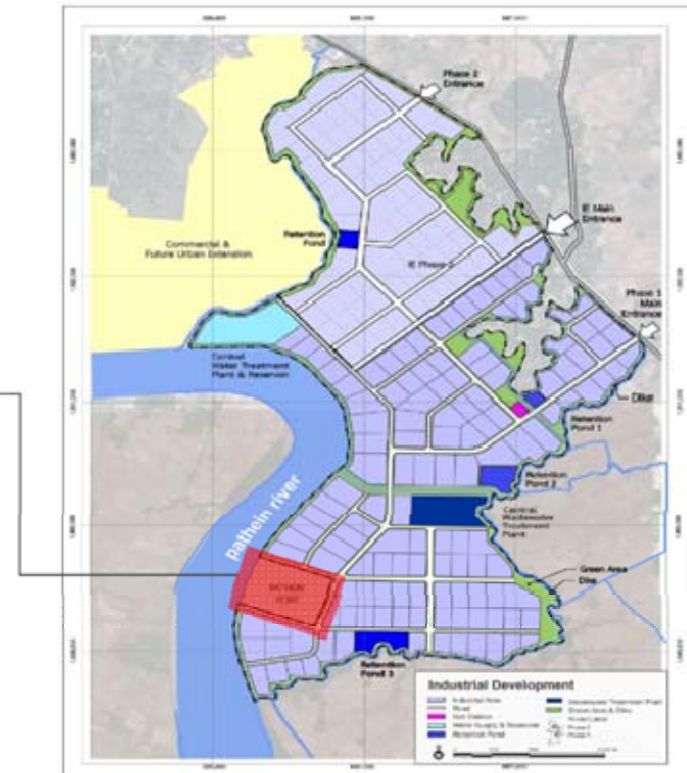
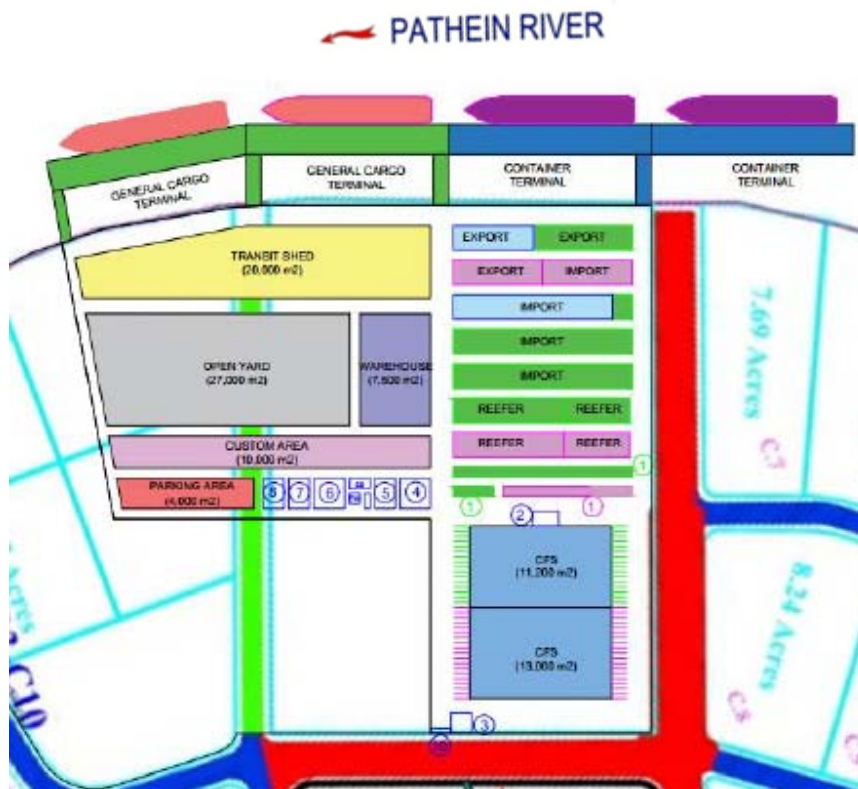
IE Land Plot Size	No of Plot	% of Total Plot	Total Area (Acres)	% of Total Area
1-4 (Acres)	14	11%	46.47	5%
4-6 (Acres)	69	52%	350.45	41%
6-8 (Acres)	17	13%	112.13	13%
8-15 (Acres)	30	23%	305.44	36%
15>(Acres)	2	2%	40.32	5%
Total	132	100%	854.82	100%



Targeted Industries for PIC

Targeted Industry	Estimated Size of Factory (acres)	No. of Factory	% of Total Plots	Salable Area (acres)	% of Total Salable Area
A) Food Processing*					
-Fishery Processing	8	23		184	
-Canned Food	4	6		24	
-Food Seasonings	2	2		4	
Total		31	20%	212	25%
B) Labour Intensive					
-Textile	4	32		128	
-Garment/Wearing Apparel	4	32		128	
Total		64	41%	256	30%
C) Domestic Market-Based					
-Consumer Products	6	24		144	
-Fertilizer	3	4		12	
-Agricultural Machinery	5	11		55	
-Plastic Products	8	20		160	
-Construction Materials	4	2		8	
-Others	4	1		4	
Total		62	39%	383	45%
Grand Total		157	100%	851	100%

Port Concept Layout



Future Plan For The Port

Pathein Industrial Port

Market potential with 3 main sources of cargo demand

Myanmar international cargo
 Capture of a portion of international cargo which currently passes through Yangon but may be diverted as Yangon and Thilawa ports are constrained by the outer sandbar and become very congested in 2020+

Ayeyarwaddy region and hinterland
 Imports and exports to destinations in the Ayeyarwaddy Division and hinterland: consumer goods, project cargo, machinery, garment, rice, fishery, agricultural products

Industrial Zone
 Captive cargo in the form of imports of raw material and machinery and exports of finished goods from the new factories in the industrial zone



River Optimization Concept Note

Pathein River

Current vessels

- The current channel allowed 3,000 and 5,000 DWT vessels with the following characteristics;

Dimension of ship

Capacity (DWT)	Draft (m)	Length (m)	Width (m)
3,000	4.0	95	14
5,000	6.0	110	17

River Optimization Concept Note

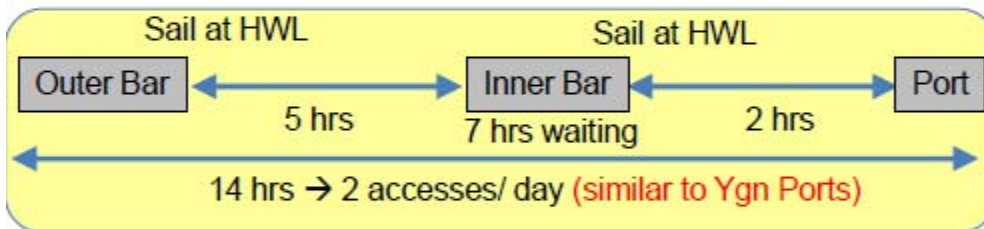
Pathein River

Accessing the river

Sailing schedule (sailing speed = 11 knots, 20 km/hr)

→ Requirement to use tidal window (TIDAL PORT);

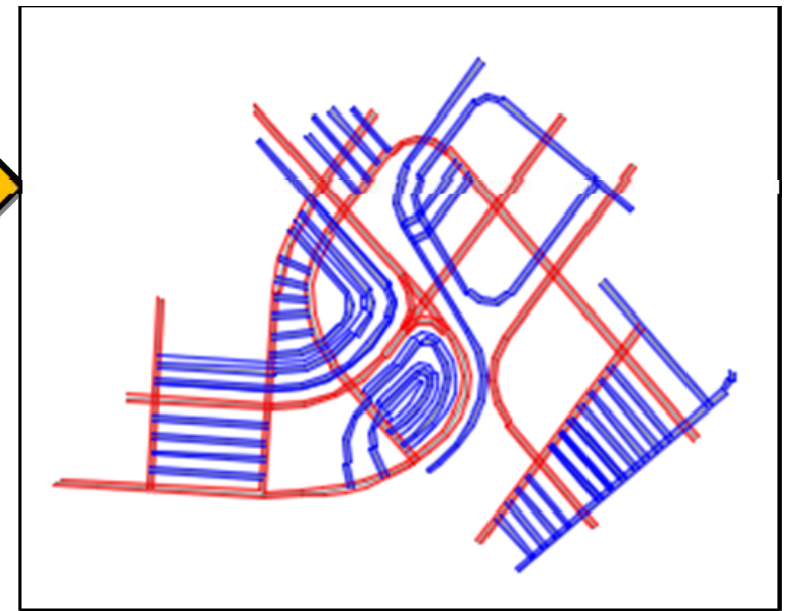
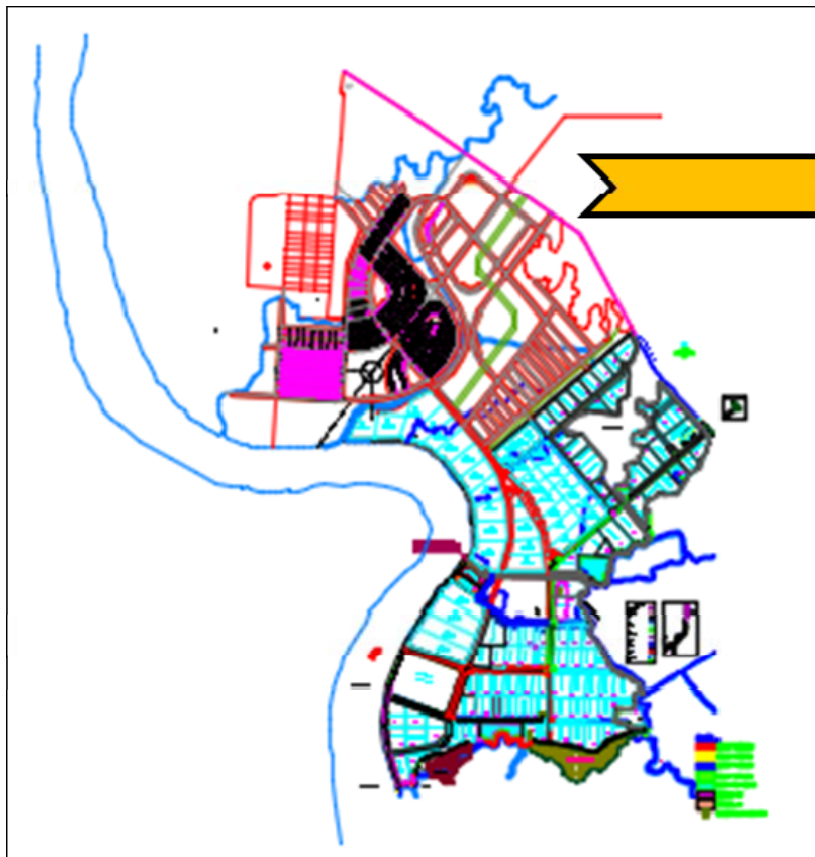
- From Outer Bar to Inner Bar: 80km
- From Inner Bar to Port: 30km



- So, river can be accessed two times per day
- In practice only ONE time per day (No night navigation)



Town Plan for Zone B (Residential and Commercial Zone)



Roads Layout

PROJECT TIMELINE





AYEYARWADDY
DEVELOPMENT
PUBLIC CO., LTD

STAGES OF PROGRESS



PATHEON
INDUSTRIAL CITY

OPENING CEREMONY OF PROJECT SITE OFFICE IN MARCH 2016



Work in Progress

Road Construction

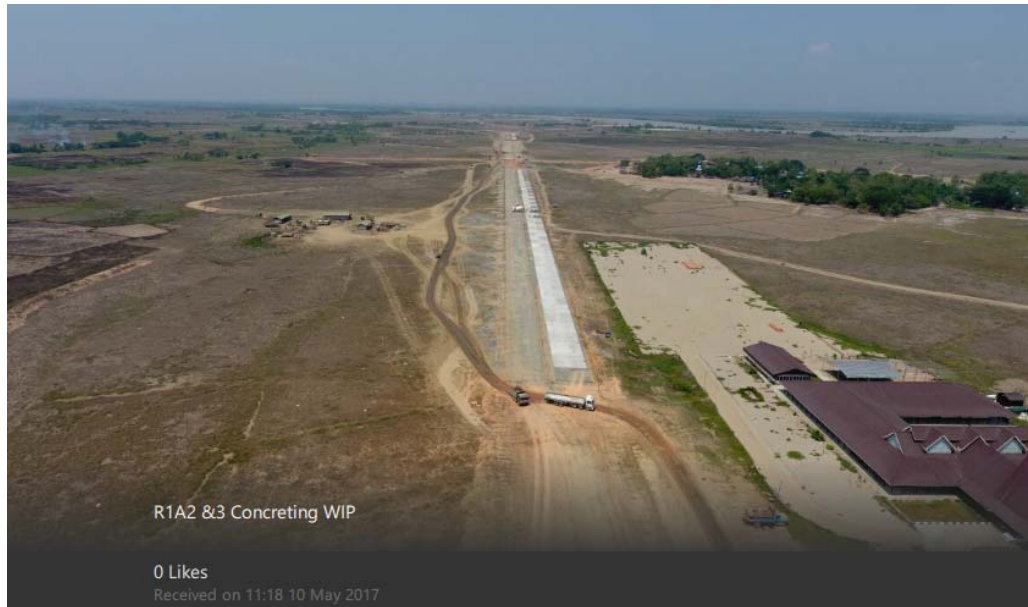


R1- A1 & A2 Construction



Work in Progress

Road Construction



R1- A1 & A2 Construction



Work in Progress

Road Maintenance

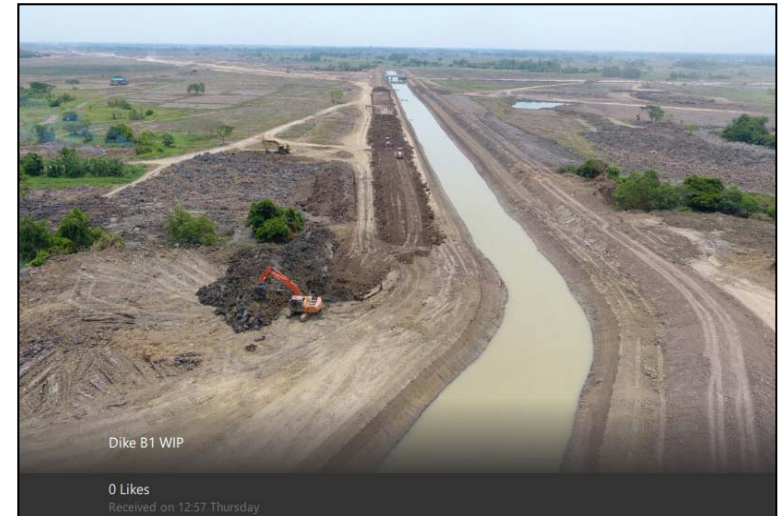
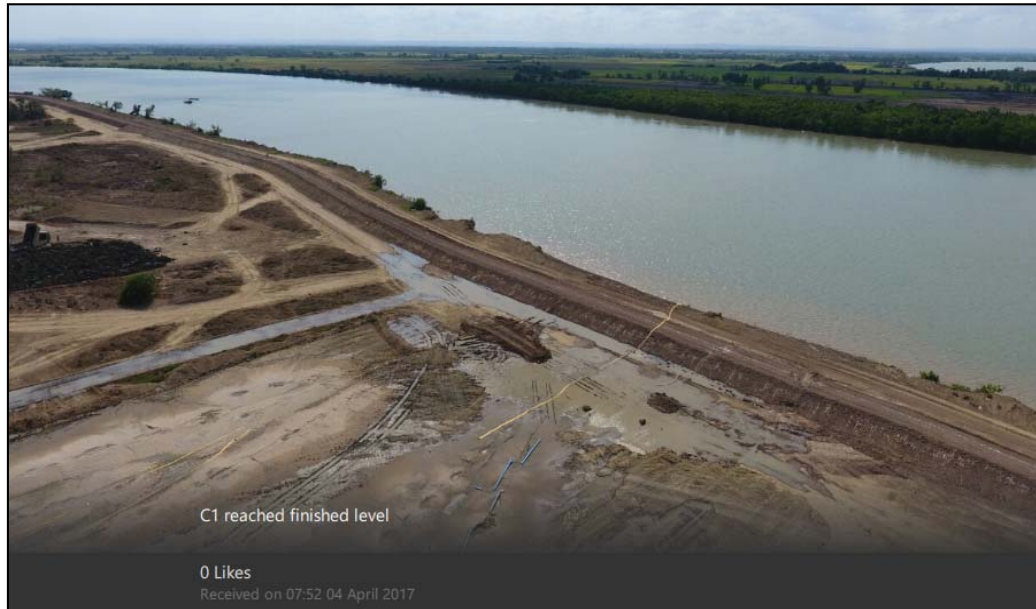


Road Maintenance

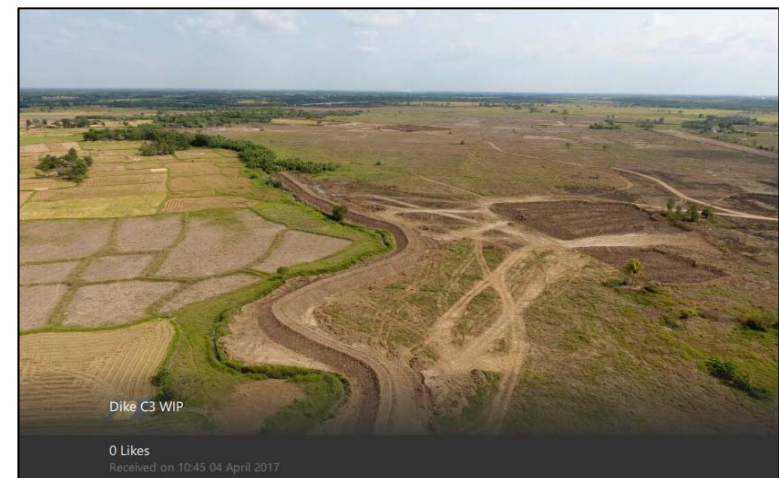


Work in Progress

Dike Construction

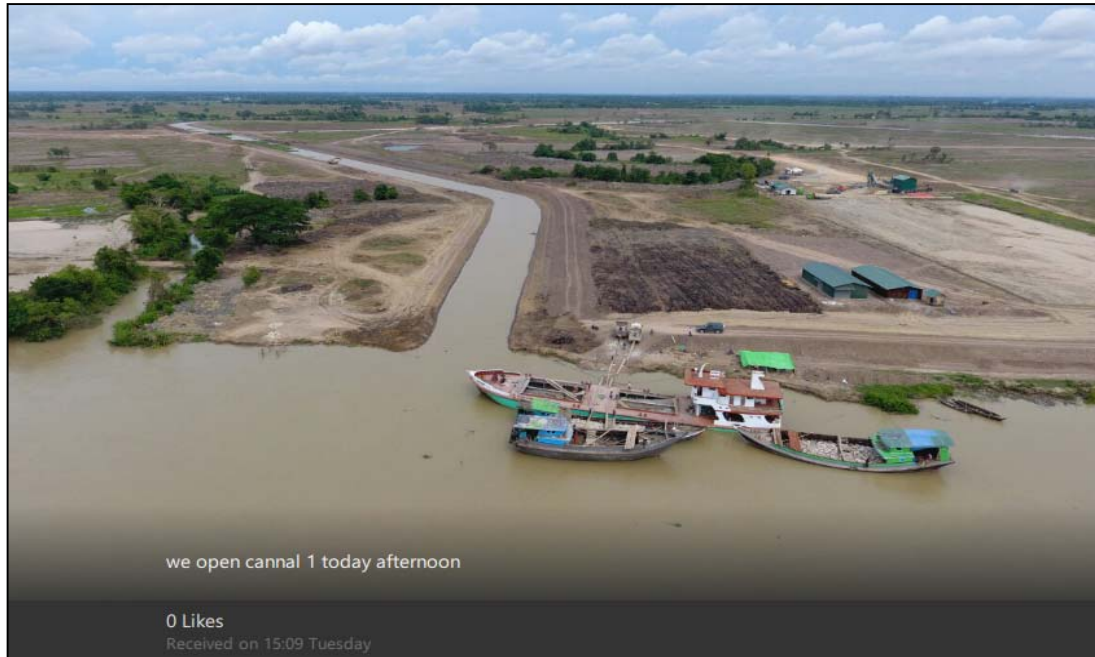


Dike Construction



Work in Progress

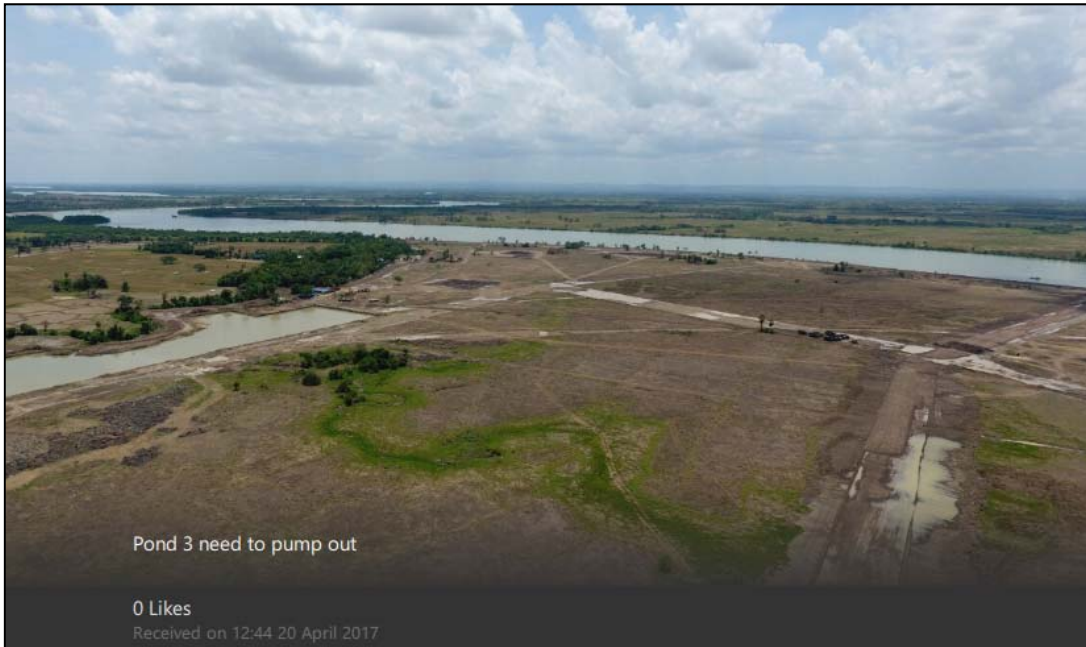
Canal Excavation



Canal Excavation

Work in Progress

Pond Excavation



Pond Excavation



Work in Progress

Bridge Construction



Bridge Construction



Work in Progress

Culvert Construction



Culvert Construction



Work in Progress

2017 - January



**Preliminary Site Survey for River Port & Navigation Channel
Collaboration with Royal HaskoningDHV**

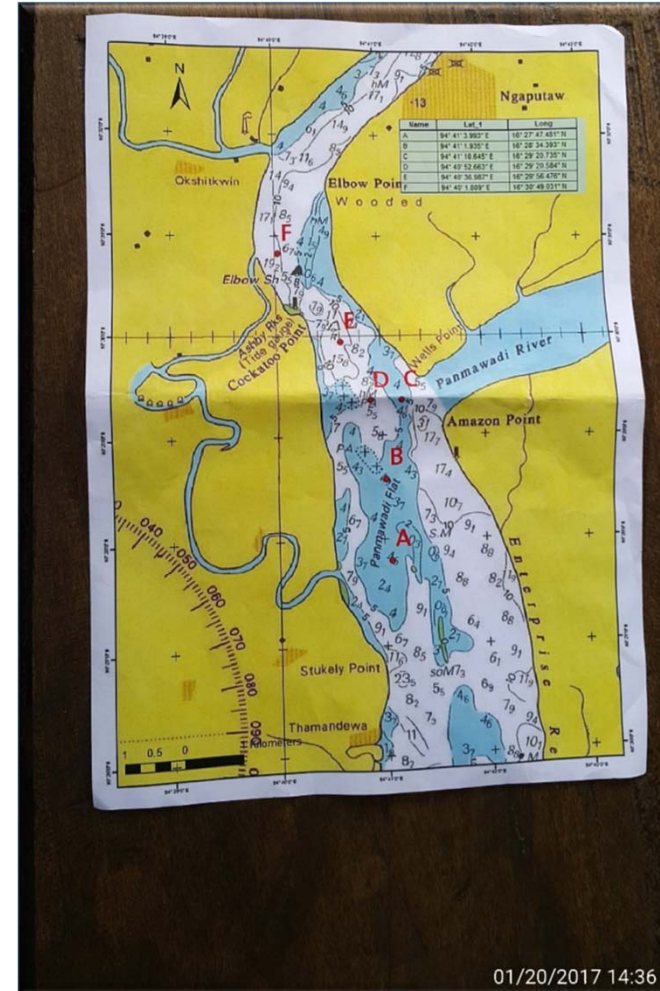


Work in Progress

2017 - January



**Preliminary Site Survey for River Port & Navigation Channel
Collaboration with Royal HaskoningDHV**



01/20/2017 14:36

Work in Progress

2017 - January



**Preliminary Site Survey for River Port & Navigation Channel
Collaboration with Royal HaskoningDHV**



Work in Progress

2017 - February

MOC Signing Ceremony with Industrial Estate Authority of Thailand (IEAT)





Work in Progress

2017 - February

MOU Signing Ceremony with Bok Seng Logistics Pte Ltd in provision of Logistic Services in PIC





Work in Progress

2017 - March

Delegation trip to Phnom Penh Special Economic Zone (PPSEZ) and Bok Seng PPSEZ Dry Port



Work in Progress

2017 - March

Delegation trip to Phnom Penh Special Economic Zone (PPSEZ) and Bok Seng PPSEZ Dry Port



Work-done

2017 - March

Delegation trip to Phnom Penh Special Economic Zone (PPSEZ) and Bok Seng PPSEZ Dry Port



Work-done

2017 - June

Participate and present at a booth in Myanmar Investment Forum 2017 at Nay Pyi Taw



Work-done

2017 - July

MOU Signing Ceremony between Ayeyarwaddy Development Public Co., Ltd, Aggreko International Project Limited and Puma Energy Asia Sun Co., Ltd



Work-done

2017 - August

Excursion and Training to Thailand invited by Industrial Estate Authority of Thailand (IEAT)



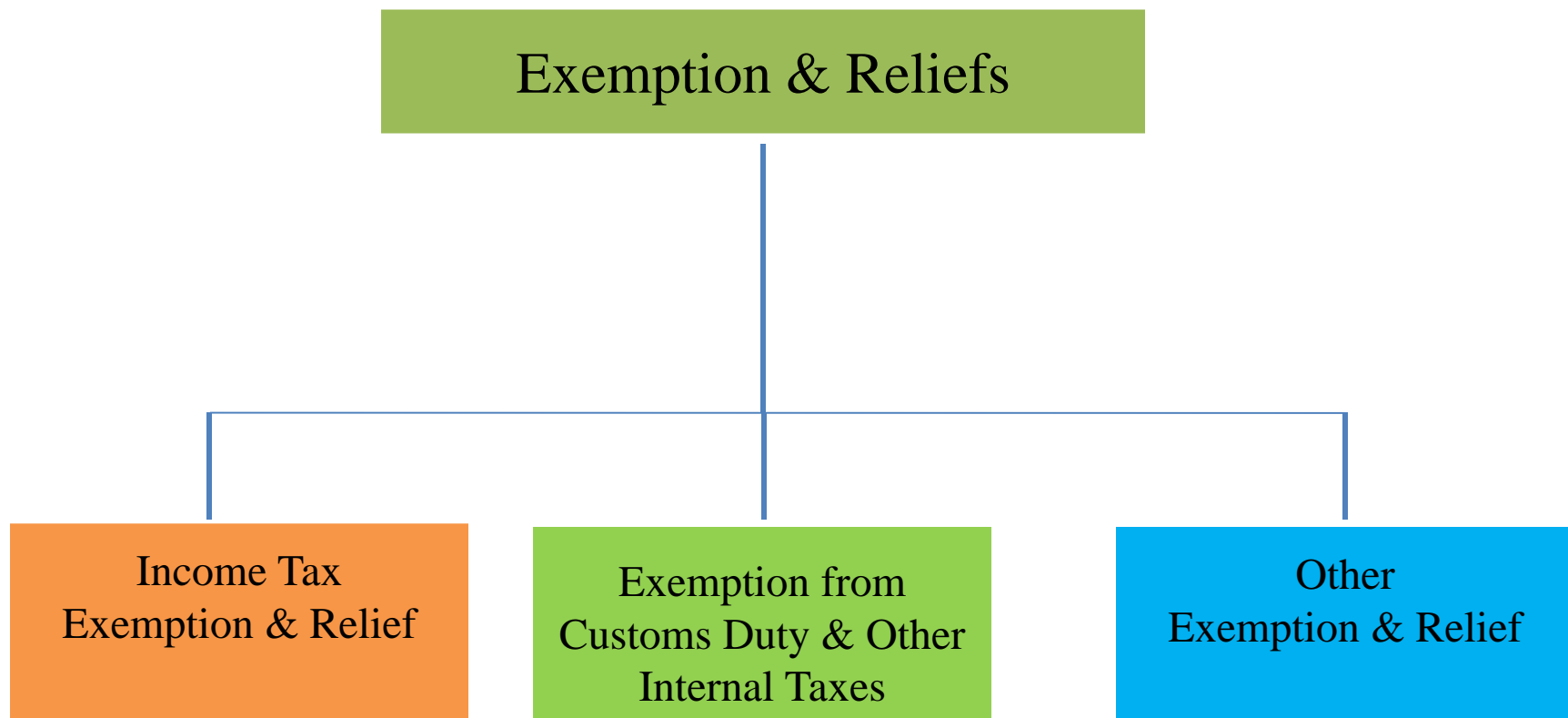
August 29, 2017 04:40 PM



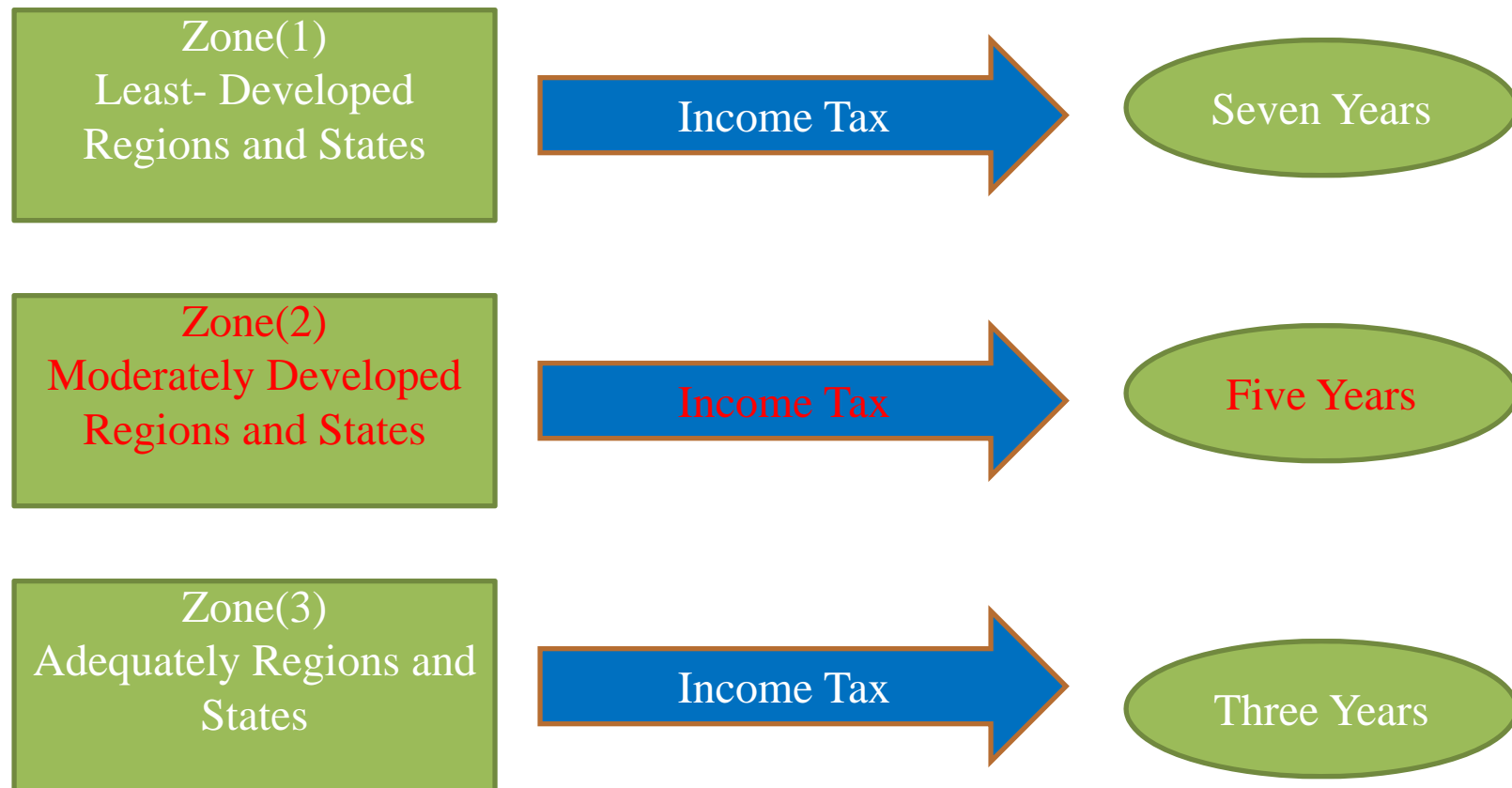
August 29, 2017 12:37 PM



Incentives Under New Myanmar Investment Law



Incentives under New Myanmar Investment Law



INVEST WITH US

Early Bird Promotion

- Attractive Packages for the initial investors in the Pathein Industrial City





AYEYARWADDY
DEVELOPMENT
PUBLIC CO., LTD

PROJECT MILESTONES
AYEYARWADDY DEVELOPMENT PUBLIC CO., LTD.

THANK YOU



PATHEINGYI
INDUSTRIAL CITY