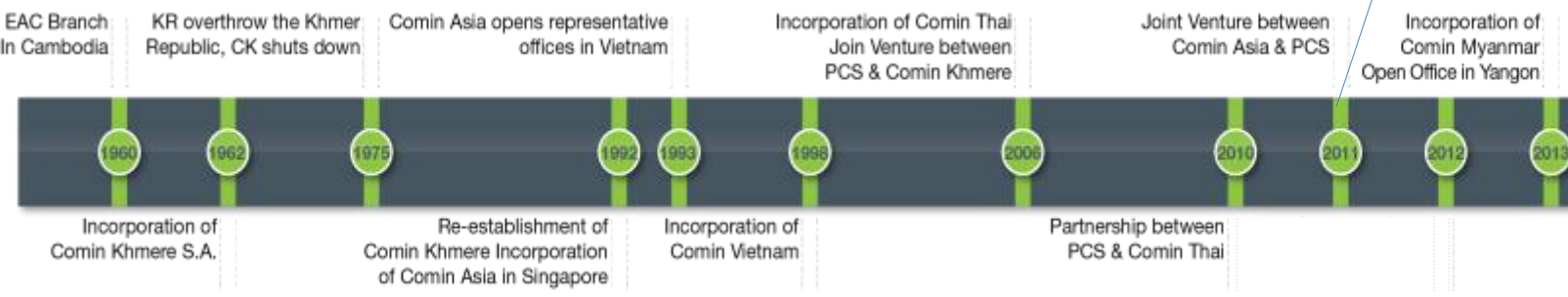




## GROUP CORPORATE PRESENTATION



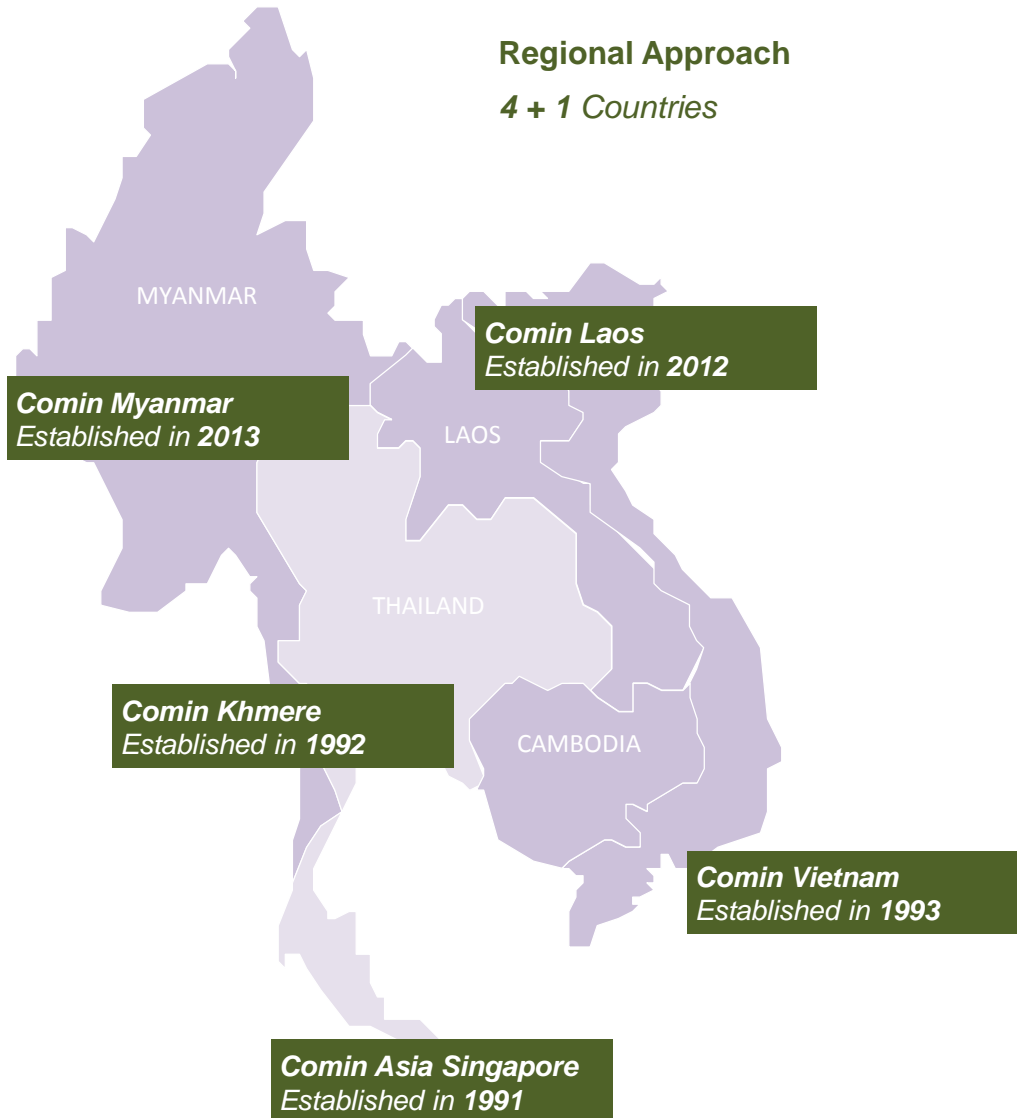
Comin Asia acquired by RMA



Phnom Penh Head Office – Then and Now

## Regional Approach

*4 + 1 Countries*



### ***Advantages of having regional industry focused and functional teams:***

- Leverage key competencies
- Manage overall cost structure and control overhead costs
- Scalability
- Flexibility with mix of permanent and project based staff
- +1 Provides On and Offshore business model possibilities

# PROJECT EXPERTISE



**Engineering,  
Procurement & Supply**

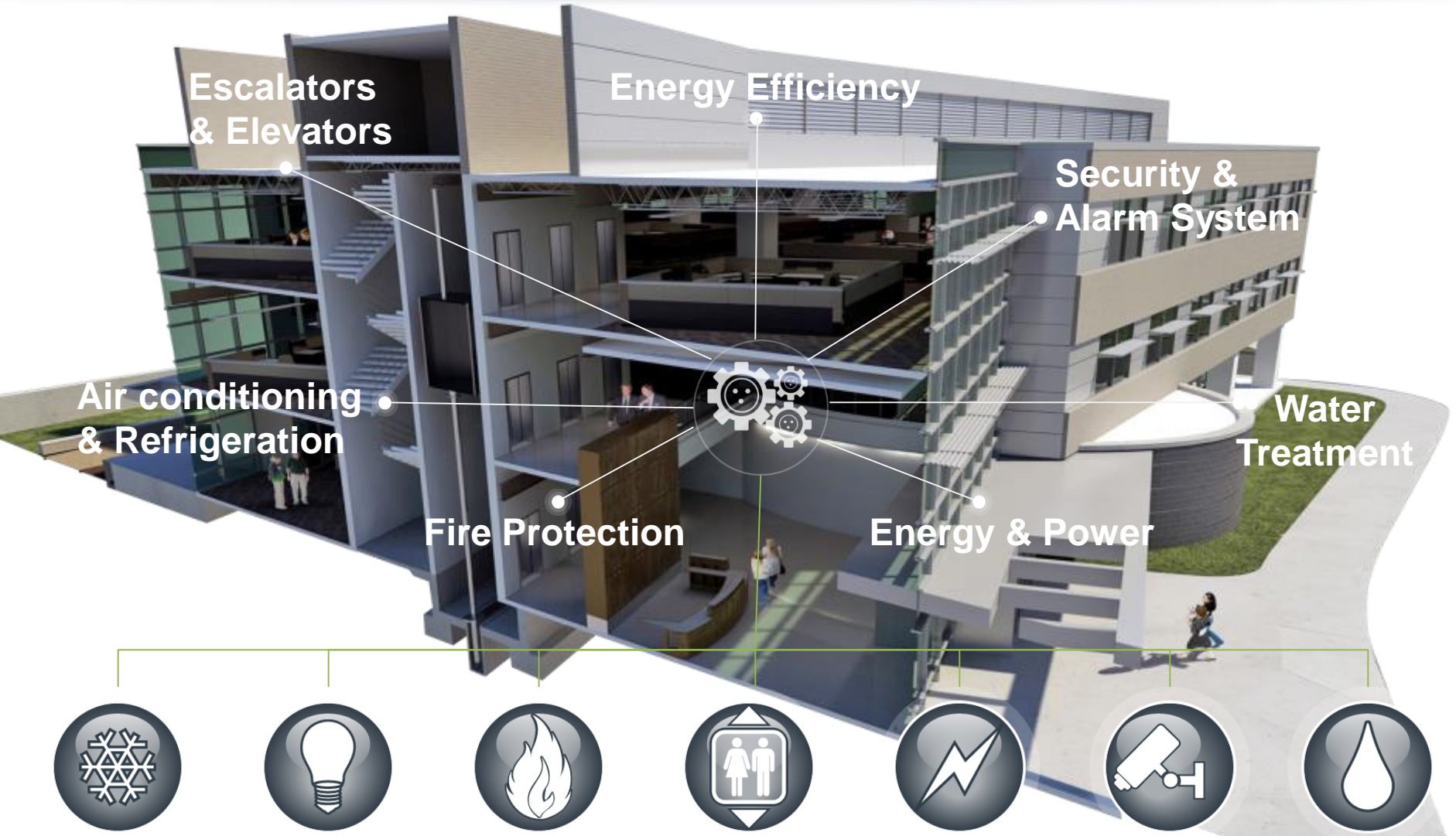
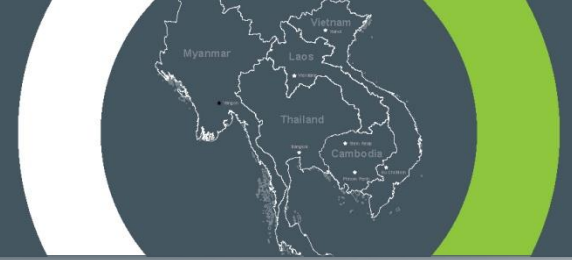
**Installation**

**Testing & Commissioning**

**Maintenance / Facility  
Management**



# EXPERTISE : M&E Building Engineering Services



Escalators & Elevators

Energy Efficiency

Security & Alarm System

Air conditioning & Refrigeration

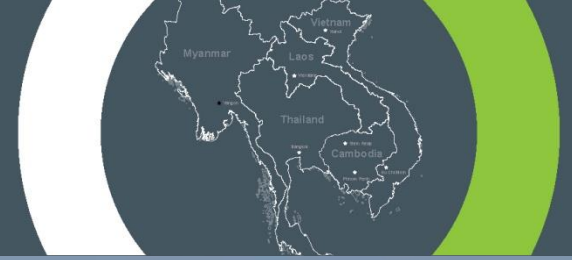
Water Treatment

Fire Protection

Energy & Power



# EXPERTISE : Power T&D



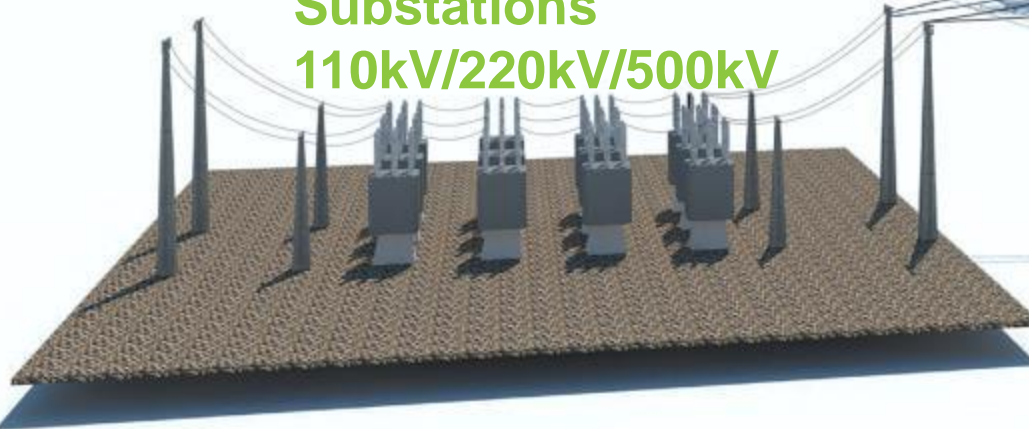
**Substation  
Automation  
& Control**



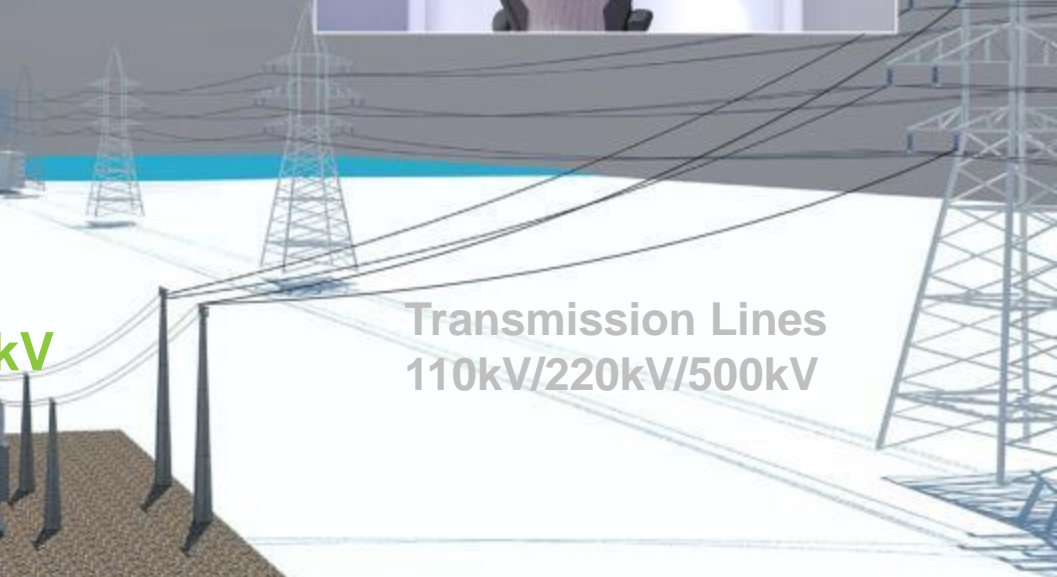
**Power Plant**



**Substations  
110kV/220kV/500kV**



**Transmission Lines  
110kV/220kV/500kV**



# WHY US?



## Selecting COMIN ensures clients of an all-round engineering solution

- ✓ Ability to manage complex world-class projects
- ✓ In-depth local market understanding and experience
- ✓ ISO 9001 procedures
- ✓ OHSAS 18001 procedures
- ✓ Supportive management and team

# SELECTED REGIONAL PROJECT REFERENCES

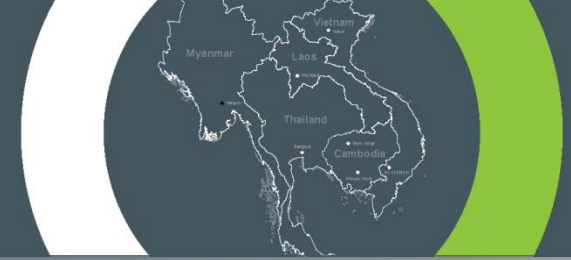


- » Power
- » Renewable Energy
- » Hospitality
- » Property
- » Industrial
- » Healthcare
- » Public/Governmental
- » Network Infrastructure
- » Transport
- » Education





# ENERGY: High-Voltage Substations



**110 kV Substation Holcim  
Cement Plant  
(Vietnam)**



**110kV / 220kV / 500 kV  
Transmission Substation  
projects (Vietnam)**



**110kV / 220kV / 500kV  
Transmission Line  
projects (Vietnam)**



**500kV CSCS Hiep Hoa  
(Vietnam)**



**110 kV CSCS GS project  
(Cambodia)**



**230 kV Kampot Substation  
(Cambodia)**

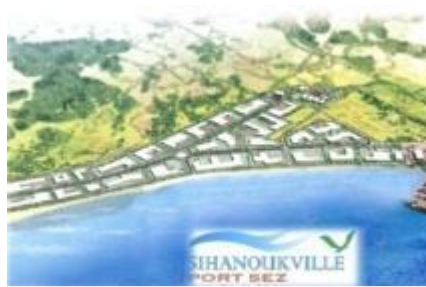
# ENERGY: Power generation



**Kampot Power Plant (Cambodia)**  
**Khmer Electrical Power (Cambodia)**  
**Cambodia Electricity Private (Cambodia)**



# Industrial



**ABB Factory (Vietnam)**

**Coca Cola Factory (Cambodia/Lao/Myanmar/Vietnam)**

**Colgate Palmolive (Vietnam)**

**Sonion Factory (Vietnam)**

**Cambodia Beverage Company (Cambodia)**

**Crown Can Factory (Cambodia)**

**Sihanouville Economic Zone (Cambodia)**

**Mascot (Laos)**

**Ojitex (Cambodia)**

**Crown (Cambodia)**

**Minebea (Cambodia)**

# HOSPITALITY



**Shinta Mani Hotel  
(Cambodia)**



**Victoria Angkor Hotel  
(Cambodia)**



**Sheraton Nha Trang  
(Vietnam)**



**Le Meridien  
(Vietnam)**



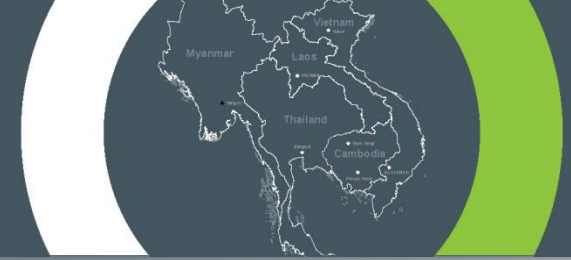
**Conrad Resort & SPA  
(Thailand)**

Hotel Mercure La Gare (Vietnam)  
The Montgomerie Links (Vietnam)  
Hotel Novotel Halong (Vietnam)

Shinta Mani Hotel (Cambodia)  
FCC Angkor (Cambodia)

Ansara (Laos)  
Ibis Hotel (Laos)

# COMMERCIAL BUILDING



**Vattanac Capital Tower  
(Cambodia)**



**Golden Westlake  
(Vietnam)**



**Indochina Riverside  
Towers (Vietnam)**



**BIDV Tower  
(Vietnam)**



**Acleda Tower  
(Cambodia)**

# HEALTHCARE



**Carlo Urbani Laboratory  
BSL3 (Vietnam)**



**Pharma Product  
Manufacturing (Cambodia)**



**Sanofi Synthelabo Plant  
(Vietnam)**



**Institute Pasteur  
Laboratory BSL3  
(Cambodia)**



**National TB Reference  
Laboratory BSL3  
(Lao PDR)**



**Mérioux Infectiologie  
Centre Laboratory BSL2  
(Lao PDR)**

# PUBLIC/GOVERNEMENTAL



Embassy of Japan  
(Vietnam)



Royal Thai Consulate  
(Vietnam)



Embassy of the Republic  
of Singapore (Vietnam)



Australian Embassy  
(Cambodia)



US Embassy  
(Cambodia)



World Bank Group  
(Lao PDR)

# EDUCATION



**RMIT University Phase 2  
(Vietnam)**



**RMIT University Phase 3  
(Vietnam)**



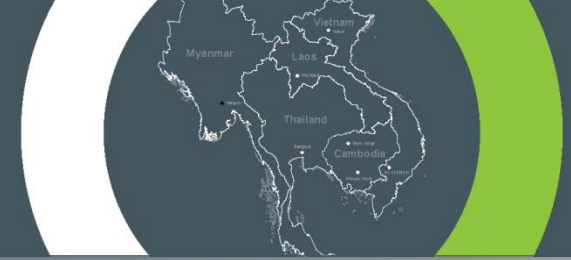
**International School of  
Phnom Penh (Cambodia)**



**Dulwich International  
School (Myanmar)**



# NETWORK INFRASTRUCTURE



**Smart-Axiata  
(Cambodia)**



**Regus Business Center  
(Cambodia)**



**Data Management Center  
(Cambodia)**



**Sotelco Data Center  
(Cambodia)**



**Acleda Tower - Data  
Center (Cambodia)**



**UCB Tower - Data Center  
(Cambodia)**

# TRANSPORT



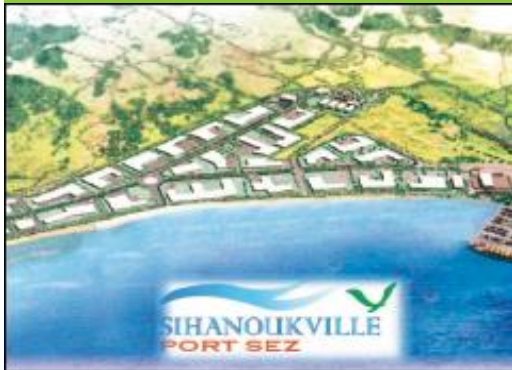
**Phnom Penh International Airport (Cambodia)**



**Siem Reap International Airport (Cambodia)**



**Sihanoukville Airport (Cambodia)**



**Autonomous Port SEZ (Cambodia)**



**Naga World FBO Hangar (Cambodia)**



**VIP Terminal PPIA (Cambodia)**

# Renewable Energy



**Wind Turbine Project (Cambodia)**  
**Laurelton (Cambodia)**  
**PSE (Cambodia)**  
**Ministry of Environment (Cambodia)**  
**Ecole Dubrule (Cambodia)**





## MYANMAR PRESENCE

# Pizza Company – Swensens

Complete MEP package (Design & Build) From 2013 to 2017



The Pizza Company & Swensens – **Dagon Commercial Center II**  
(Nov 2013- Mar 2014)

Swensens – **Junction Mawtin Commercial Center**  
(April 2014- May 2014)

The Pizza Company & Swensens – **Ocean Commercial Center**  
(July 2014 –Sept 2014)

The Pizza Company & Swensens – **Myanmar Plaza Shopping Mall (HAGL)**  
(Mar 2016 –June 2016)

The Pizza Company – **(Culture Valley) People Park**  
(Aug 2016- Oct 2016)

The Pizza Company – **(Bogyoke) Down Town**  
(Jan 2017- May 2017)



# Jaguar - Land Rover Showroom

## Complete MEP package – Feb-May 2014



### Scope of Works:

- **Design & Build (Project)**
- **Complete MEP Scope**

- **HVAC**

Ventilation, Exhaust, AC Split & VRV, Air Grill & Duct Work.

- **Electrical & ELV**

Generator, LV Panels and distribution, LV cabling, Earthing, Lightning protection, Data & Telephone, CCTV

- **Plumbing & Sanitary**

Sanitary Fixture & related Piping Work, Cold Water System

- **Fire Protection System**

Fire Hose reel Pump, Fire Hose reel, Extinguisher ,Fire Alarm.

# John Deere Showroom – Hlaing Tharyar

## Complete MEP package – May 2015- June 2015



### Scope of Works:

- **Design & Build (Project)**
- **Complete MEP Scope**

- **HVAC**

Ventilation, Exhaust, AC Split , Air Grill & Pipe Work.

- **Electrical & ELV**

Generator, LV Panels and distribution, LV cabling, Earthing, Lightning protection, Data & Telephone, CCTV

- **Plumbing & Sanitary**

Sanitary Fixture & related Piping Work, Cold Water System

- **Fire Protection System**

Fire Hose reel Pump, Fire Hose reel, Extinguisher ,Fire Alarm.



# SKD Ford Car Assembly Factory (East Dagon Industrial Zone). Complete MEP package –(Nov. 2015 - June. 2016)



## Scope of Works:

- **Design & Build (Project)**
- **Complete MEP Scope**

- **MVAC**

Ventilation, Exhaust, AC Split , Air Grill & Pipe Work.

- **Electrical & ELV**

Generator, LV Panels and distribution, LV cabling, Earthing, Lightning protection, Data & Telephone, CCTV

- **Plumbing & Sanitary**

Sanitary Fixture & related Piping Work, Cold Water System

- **Fire Protection System**

Fire Hose reel Pump, Fire Hose reel, Extinguisher ,Fire Alarm.



# Coca-Cola Pinya Beverage Factory

## Electrical + Fire Fighting+ HVAC/Refrigeration

Complete MEP package – Jan 2014 – March 2015



### Scope of Works:

- **Electrical works**

LV cables, Sub-DB's, Socket Outlet, Indoor and Outdoor lighting

- **Fire Fighting System**

UL/FM Diesel Pump, Electrical Driven Pump, Jockey Pumps, Sprinkler and Hydrant System

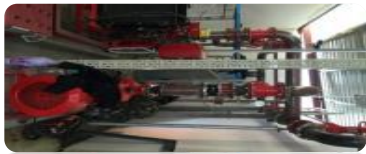
- **Fire Alarm System**

Smoke Detector, Heat detector, Module, Bell, Break Glass and FA Panel.

- **HVAC**

Air Conditioning units, Ventilations, AHU, Evaporator, Compressor and Refrigeration.

# Japanese Honey's Factory – (Mingalardon Industrial Park) Complete MEP package – May 2014- Feb 2015



## Scope of Works:

- **Electrical works:**

Install 500KVA open type generator, MV system 1,500KVA Oil type transformer, LV Distribution panels, Lighting fixtures Indoor and outdoor, Power socket, phone socket.

- **Fire Fighting System:**

Fire alarm system, Lightning protection system.

- **Plumbing Works:**

Drainage system, Sewage system, All sanitary wares ( Toilet bowl, Urinal).

- **Network, Security & Automation:**

Data socket, Data cabling, telephone cabling, PA system.

# Dulwich International School (Thanlyin Star City, Yangon).

## Current On Going Project

### Early School (Aug 2015- June 2017)



#### Scope of Works:

- **MVAC**

VRV System, Centrifugal Fan Installation, Air Grill & Duct Works, Chimney Ventilation, Copper Piping Work

- **ELECTRICAL**

DB & MDB Panels Installation, Feeder Cabling & Wiring, Lighting Fixture & Lighting Control System, Lighting Protection & Ear thing

- **ELV**

Telephone – Data & MATV System, Data Cabling & Wiring, Fire Alarm System, CCTV , Time Distribution, Programmable Bell & Background Music System, Access Control System

- **Plumbing & Sanitary**

Sanitary Fixture, Cold Water System, Coring, Hot Water System ,Water Drainage System, Related Piping Work.

- **Fire Fighting**

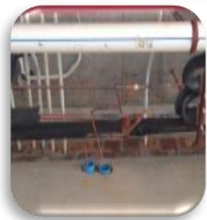
Fire Suppression System, Fire Hose Reel Cabinet, Dry Riser - Wet Riser System,

- **LPG System**

Seamless Steel Piping, Valve & Pressure Gauge , Gas Detector, Gas Control Panel, LPG Gas Tank Installation



# Pun Hlaing International School (Dulwich-2) Project ( Pun Hlaing Golf Estate, Hlaing Tharyar, Yangon) Completed August 2017



## Scope of Works:

- **Electrical System**

Generator, LV Panels and distribution, LV cabling, Earthing, Lightning protection

- **ELV System**

CCTV, Data LAN, Fire Alarm and PA system

- **Mechanical System**

Cooling/Heating AC, Ventilation, AHU

- **Plumbing & Sanitary System**

Underground Piping, Water heaters, Drains, Booster Pumps, Irrigation Pump, FRP Septic tanks, Water Treatment System, Sanitary Fixtures.

- **Fire Fighting System**

Fire Hose reel Pump, Fire Hose reel, Extinguisher System.

# PEB STEEL MYANMAR FACTORY Project. (Thilawa SEZ, Thanlyin Myanmar) Completed May 2017)



## Scope of Works:

- **MVAC**

Split AC System, Ventilation System, Ducting Work, Electrical Connection for MVAC System (Wiring, Cables, Conduit & Accessories).

- **Electrical**

Main Power Supply System, Generator (1500kVA, 33kV), LV Distribution System, Feeders Work, Earthing & Lighting Protection System, External Lighting, Lighting & Socket, Data & Telephone, Fire Alarm Control System, Public Address System.

- **Plumbing & Fire Fighting**

Sanitary Fixture & related Piping Work, Hydraulic System, Cold Water System.



# Yoma Office Project (YOP) (Punhlaing Golf Estate, Hlaing Tharyar, Yangon). Current On Going Project (August 2016 – July 2017)



## Scope of Work:

- **Electrical System**

Wiring for Lighting Point & Socket, Conduit & Piping, Metal Trucking, DB Panels and distribution, Earthing, Lightning protection, Electrical for Fire Shutter Door.

# Yangon Excelsior Hotel Project (Bo Son Park St. Downtown Yangon). Current On Going Project (August 2016 – July 2017)



*Yangon Excelsior Hotel Co., Ltd.*



## Scope of Works:

### • Electrical System

Ground Cabling, Main Incoming Feeder, Automatic Transmission & Switch, Generator Installation (630KVA Prime Rated Genset, 3 Phase, 50Hz, 400V), Lightning, Surge & Earthing Protection, MDB & SDB, Supply install and connecting of following Cu/XLPE/PVC, Cu/PVC and Cu/FR-PVC feeder cables 0.6/1KV, Utility Secondary Cables, Race Way & Conduits, Lighting Fixture,

### • ELV System

Public Address System, CCTV System, Tel & Data System, IPTV, Access Control System.

### • MVAC System

Metal Duct Work with Insulation, Hydronic Piping Installation with Insulation, Fresh Air handling Unit Supply & Installation, VRV System, Dx Unit Cooling System, Fire Damper, Volume Damper, Centrifugal In Line, Exhaust Fan & Diffuser, PROPELLER FANS, UPBLAST FAN & Air Grille Installation, Testing & Adjusting.

### • LPG System

LPG System including gas detector panel, check valve, civil works, all accessories.

### • Fire Fighting

Fire Alarm System, NSPA approve Vertical Turbine Electrical Pump Fire Fighting System, Dry Riser System Installation together with T&C.

### • Plumbing & Sanitary

Water Distribution System, Cold & Hot Water System, Sanitary Plumbing & Rain Water System, Underground Drainage System, Submersible Sewage Pump System.



# Kianjoo CAN Factory Myanmar (Thilawa SEZ, Thanlyin Myanmar) Current On Going Project (June 2017 – Mar 2018)



## Scope of Works:

- **Electrical System:**

High Tension 33KV Cabling, Generator 1500kVA 3P, Supply & Install of LV Switch Board & DB Board. Main and Sub-Main Distribution, Cable Tray/ Ladder/ Trunking/ Conduits, Light & Fitting, Circuit & Wiring, External & Landscape Lighting System, Lighting Protection & Earthing,

- **ELV System:**

Telephone & Data, CCTV System, Access Control & Public Address System, T&C

- **Fire Protection System:**

Fire Alarm, External Hydrant, Automatic Sprinkler/ Drencher System ,Fire Hose reel, Portable and Automatic Dry Powder Fire Extinguishing, FM200 station - Foam station, Fire Stopping

- **Plumbing & Sanitary:**

All Piping Work, Water Supply, Sanitary Drainage System, Rain Harvesting , T&C for Plumbing & Sanitary.

- **ACMV System:**

Supply, delivery and installation of mechanical ventilation fans, silencers, attenuators, complete with anti-vibration mounts, flexible connectors and accessories, Mechanical Ventilation, Ducting Work, AC Split Unit, air cooled VRV system , refrigeration Pipe.



# BOX PAK Factory Myanmar (Thilawa SEZ, Thanlyin Myanmar) Current On Going Project (June 2017 – Feb 2018)



## Scope of Works:

- **Electrical System:**

High Tension 33KV Cabling, Generator 1250kVA 3P , Supply & Install of LV Switch Board & DB Board. Main and Sub-Main Distribution, Cable Tray/ Ladder/ Trunking/ Conduits, Light & Fitting, Circuit & Wiring, External & Landscape Lighting System, Lighting Protection & Earthing,

- **ELV System:**

Telephone & Data, CCTV System, Access Control & Public Address System, T&C .

- **Fire Protection System:**

Fire Alarm, External Hydrant, Automatic Sprinkler/ Drencher System, Fire Hosereel, Portable and Automatic Dry Powder Fire Extinguishing, FM200 station - Foam station, Fire Stopping.

- **Plumbing & Sanitary:**

All Piping Work, Water Supply, Sanitary Drainage System, Rain Harvesting.

- **ACMV System:**

Supply, delivery and installation of mechanical ventilation fans, silencers, attenuators, complete with anti-vibration mounts, flexible connectors and accessories, Mechanical Ventilation, Ducting Work, AC Split Unit, air cooled VRV system, refrigeration Pipe.

# GOETHE Institute Yangon (Ko Min Ko Chin Road, Yangon, Myanmar) Current On Going Project (June 2017 – Dec 2017)



## Scope of Works:

- **Electrical System**

Generator, LV DB, Lighting Fixtures, Wiring, Cabl & Accessories, Cable Containment & Accessories, AVR, T&C/ Training, Earthing & LPS, Fire Sealants, Miscellaneous, Oil Tank.

- **Mechanical System**

AC & VRF, Heat Recovery Wheel, Ventilation, Grille & Diffuser, Ducting & Accessories, Piping, Insulation, Miscellaneous.

- **ELV & Data Telephone**

Smoke & Heat Extraccion, Telecommunications/ Intercom , Emergency Call for Handicapped Persons, Fire Alarm (BMA), Service-neutral Netwrok/Data & Telephone, Building Automation, Cable & Accessory, T&C.

- **Plumbing & Sanitary / Fire Protection**

Pumps, Water Treatments, Fire Hydrant, Sewage PP Pipe & Fittings, Service Water PB Pipe & Fittings, Sanitary Fixtures & Accessories, Water Heater, Thermal Insulation , Accessories.



# HSE has been audited & found to meet the requirements of Standard OHSAS 18001:2007 Health & Safety Management System









## CERTIFICATE OF REGISTRATION

This is to certify that

**Comin Asia Limited**  
 No. 37, Kabar Aye Pagoda Road,  
 Inya Lake Hotel, Mayangone Township,  
 Yangon, Myanmar

has been audited and found to meet the requirements of standard  
**OHSAS 18001:2007 Health & Safety Management System**

**Scope of certification**  
 Contracting Division: Mechanical and Electrical Contracting, Procurement, Installation and Commissioning; MEP Drawing, Electrical Installation and Commissioning Works, Mechanical Installation and Commissioning Works, Plumbing Installation and Commissioning Works and MVAC Installation and Commissioning Works.

Certificate number: 1116

Issue number: 2016-01

Certificate start date: 13 September 2016

Certificate expiry date: 12 September 2019

Date of initial certification: 13 September 2016



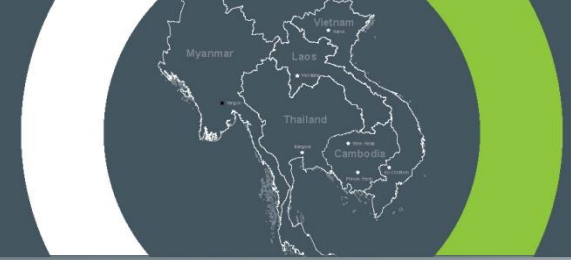
**Tom Johnston**  
 General Manager  
 Central Certification Services

Exova (UK) Ltd, (T/A Exova BM TRADA), Chiltern House, Stocking Lane, High Wycombe, Buckinghamshire, HP14 4ND, UK  
 Registered Office: Exova (UK) Ltd, Lochend Industrial Estate, Howbridge, Midlothian EH28 8PL United Kingdom. Reg No. SC070429.

This certificate remains the property of Exova (UK) Ltd. This certificate and all copies or reproductions of the certificate shall be returned to Exova (UK) Ltd or destroyed if requested. Further clarification regarding the scope of this certificate and verification of the certificate is available through Exova BM TRADA or at the above address or at [www.exovalimited.com](http://www.exovalimited.com)

The use of the UKAS accreditation mark indicates accreditation in respect of those activities covered by the accreditation certification 012

Multisite clients - The scope of certification shown above includes the participating sites shown in appendix A



A p p r e c i a t e  
Y o u r P a r t n e r s h i p

**Richard VAILLANT:**     [richard@cominasia.com](mailto:richard@cominasia.com)

**Zin Zin Aung :**            [zin.zinaung@cominasia.com](mailto:zin.zinaung@cominasia.com)

**Htet Aung (TEDDY):**    [htet.aung@cominasia.com](mailto:htet.aung@cominasia.com)

