

MEMBERSHIP DIRECTORY

2020

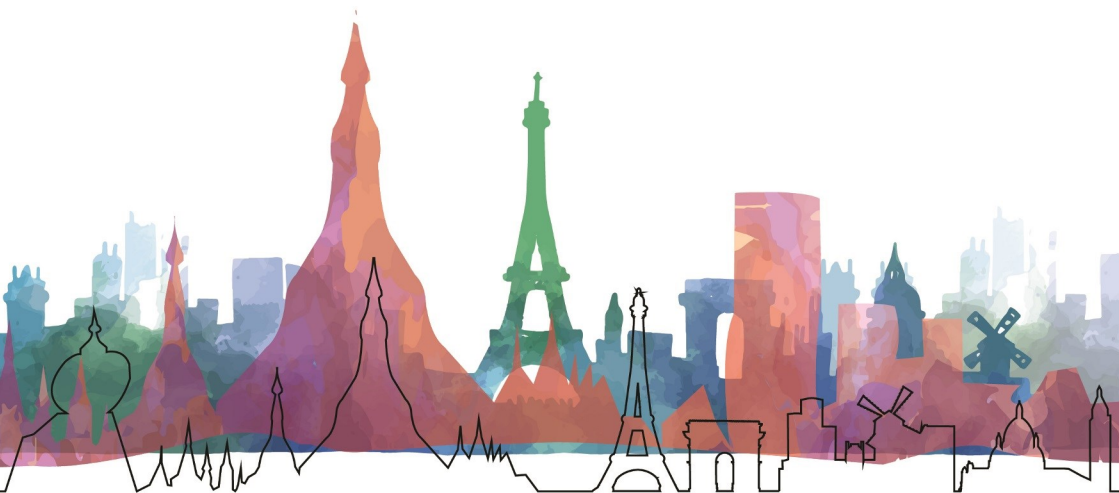




Table of content

MESSAGES

Message from Ms. Sarah Lubeigt, President of CCI France Myanmar	8
Message from Mr. Guillaume Rebiere, Executive Director of CCI France Myanmar	9

THE FRENCH MYANMAR CHAMBER OF COMMERCE AND INDUSTRY

Who we are

- Our locations	13
- Our Board of Directors	14
- Our team	16
- Our CCI Ambassadors	17
- Our Members Committees	18
- Our international networks	19

What we do

- Our Business Services	21
- Our Membership Programme	23
- Our Human Resources Services	25
- Our Memberships and their benefits	26

France in Myanmar	28
-------------------	----



CCI FRANCE MYANMAR'S MEMBERS

By alphabetical order

A - p32 - Acteus Group - Action Contre la Faim - Aden Services - AFSIM Co. Ltd - AGS Four Winds - Air France - Akhuka Productions - Allen & Overy - Annam Myanmar - Arc Distribution - Archetype Myanmar - Artelia - Audi Myanmar - Automotive Asia (Myanmar) - Audier & Partners - Awei Metta - AYA Bank

B - p55 - Banyan Green Services - Belmond Governor's Residence – BERIM - Bioderma/ Naos/ Mintha Care - Bolloré Logistics - BRED Bank - BYMA (Bouygues Construction)

C - p66 - Camusat - Canal+ Myanmar - Carrefour - CB Bank – City Holdings Limited - CMA Ships Myanmar - CMA CGM - Conyat Create - Crown Advanced

D - p77 - Dentons Myanmar - Dextra Transport - DFDL Myanmar Limited

E - p80 - EDF - EXO Travel

F - p83 – Flymya – FMIDecaux - Freyssinet

G - p87 - Golden TMH Telecom - Grand Mercure Yangon Golden Empire - Green Vision - Groupe SEB - Gulliver Travels & Tours

H - p93 - Havas Riverorchid - Hotel G Yangon – HQS - Hydro Plant

I - p99 - IAS-8 - ibis Styles Yangon Stadium - IKON Group of Companies - Inno Power - Inspirial Creative – InsurExcellence - International Group of Entrepreneur Company Limited (IGE) - International SOS - Inya Lake Hotel

J - p110 - Javelin Services - JDI Engineering

K - p112 - KiwiGo

L - p114 - Le Planteur Inya Lake – Legrand – Lepetitjournal – Lesaffre - LFIR (French International School of Yangon - Joseph Kessel) – Lithan - Livingstons Legal - Lotte Hotels & Resorts – LUMA - Luther Law Firm

M - p126 - Mane Myanmar (V. Mane Fils) - Medi Myanmar - Mega Lifesciences – Melbourne - Melia Yangon Hotel - Mercure Mandalay Hill Resort - Mercure Yangon Kaba Aye - METRO Wholesale Myanmar - Mirandus Travels and Tours (Travelpro) - MLR Company Limited - Myanmar Assistance (Feti'a Assistance) - Myanmar Bureau Veritas - Myanmar Carlsberg Company Limited - Myanmar Home Design - Myanmar Jardine Schindler - MyJobs Myanmar -

MyWorld Careers

N - p150 - Nexlabs - Nordic Tele Services - Novotel Inle Lake Myat Min - Novotel Yangon Max

O - p156 - Okkar Thiri

P - p158 - Panellist Business Services - Pegaz Solutions - Peugeot Myanmar – Phandeevar - Poe-ma insurances - Pullman Mandalay Mingalar - Pullman Yangon Centerpoint

R - p170 - Razel-Bec – Recyglo - RMA Myanmar - Rosewood Yangon - Royal Ruby

S - p176 - SafeComs Myanmar - Samitivej International - Sanofi Myanmar - SBA Wines – Schlumberger - Schneider Electric - Seagram Myanmar - SEA LION - SeaOwl Energy Services – Servier – SgT - SMPP Legal - Sofitel Inle Lake Myat Min - SUEZ Consulting - Super Global Advanced Enterprise - Synapse Original

T - p197 - T & E International - The Strand Yangon - Thura Swiss - Total E&P Myanmar - TRACTEBEL (Engie) - Travel With Me

U - p206 - Ulink Assist Myanmar

V - p207 - Veolia Water Technologies - Vinarco - Vivablast - Voltaia

W - p211 - World Wide Fund for Nature (WWF)

Y - p212 - Yangon Excelsior Hotel - Yangon Property Management - Yangoods (Creative Access) - Yever - Yoma Fleet - Yoma Strategic Holdings

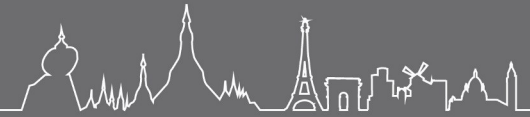
Z - p221 - Zinbrend

INDEX

Members by sector

Members by country

Members by alphabetical list of contacts



MESSAGES





Mrs. Sarah Lubeigt
President
CCI France Myanmar

From being the informal French Business Association for 22 years, CCI France Myanmar became one of the first foreign Chambers to have a legal entity as soon as 2014 in Myanmar. Our Chamber is today comprised of more than 180 members, 60% of which are non-French. The steady growth of new members (+15% yearly) shows the attractiveness of our institution which has been consolidating its expertise in three main areas.

Firstly, in sectorial training aimed at improving professional skills in all fields, including Digital Marketing, in Finance, in Legal & Human Resources..

Secondly, CCI France Myanmar has set up Members committees dealing with subjects such as Human Resources, Young Entrepreneurship, Tourism, Made in France. Together, they have already implemented many projects, such as the Myanmar Salary Survey, the Young Entrepreneurs Awards, the #CometoMyanmar Video contest, pu-

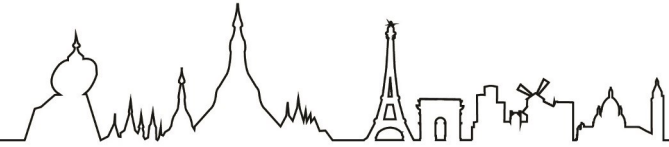


blication of guides, the first French Fair with Marketplace, and other projects.

Thirdly, Business Development Support has strengthened with a higher level of networking events, the publication of guides, and services to companies at every stage of their development : market research, matchmaking, recruitment, wage portage, office renting, conferences, trainings, and so on.

This culminated with the creation of the HUB France Myanmar and the moving of the Chamber's office to Times City in January 2020.

I would like to thank the CCI operational team and all of our members who have always been of great support to the Chamber and made everything possible thanks to their commitment. Many new projects are in the pipes and we look forward to continuing working will you all.



Mr. Guillaume Rebiere
Executive Director
CCI France Myanmar

Thanks to all our Members, CCI France Myanmar has been steadily growing annually by 15% for 5 years and has now become one of the most active Chambers in Myanmar.

We are especially proud to have managed to make our Chamber truly international and multicultural, since our Members now represent more than 10 nationalities (45% French, 45% Myanmar, 10% Others).

This diversity has been a real driver for all the projects and activities that we have implemented so far, being particularly visible in the HUB France Myanmar, a group of international companies, Members of CCI France Myanmar, who chose to move their offices there with us. Indeed, this cluster brings organisations from France, Myanmar, Singapore, Thailand, and Korea.

We still maintain the « French Touch » which makes our Chamber unique, by organising more networking events, by organisation delegations, by promoting

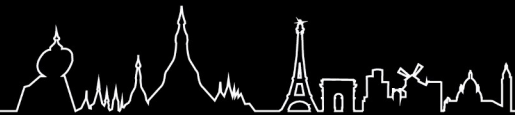


French brands in Myanmar, by helping French companies develop their activities in Myanmar thanks to our new business centre, and by building a bridge between Myanmar entrepreneurs and French investors.

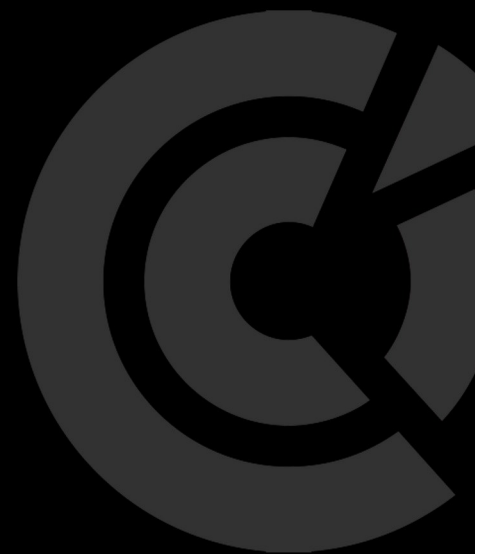
Yet, our main objective remains, of course, to help all our Members and the economy of Myanmar to develop in a sustainable way, especially by supporting them in the management of their human resources, thanks to our training, our seminars, our guides, our recruitment and wage portage services, our salary survey, and so on.

This directory is a tribute to all our Members who have supported us so far, for whom and with whom we continue to exist and to grow.

I look forward to working with you this year again. Thank you all!



**THE FRENCH MYANMAR CHAMBER
OF COMMERCE AND INDUSTRY**



**37 LOCAL PARTNERS WITH A COMMON GOAL:
YOUR GLOBAL SUCCESS**



Who we are



Our locations

Head Office - Yangon

Times City – Office Tower 2 – 16th floor
– Units 1611 & 1612 - Between Hanta-
waddy & Kyuntaw Roads - Kamayut
Township – Yangon – Myanmar
+95 9 425 450 546
contact@ccifrance-myanmar.org

Contact Business Centre

Mrs. Aye Su Oo
Membership & Business Support Executive
business.executive@ccifrance-myanmar.org



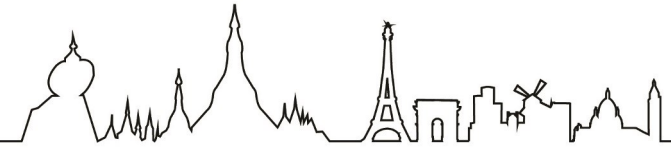
Mandalay Branch

Block 2 - Unit 5 - 2nd Floor - Between
Mingalar 2 and 3 Street - Mingalar Man-
dalay Compound - Chan Mya Tar Zi
Township - Mandalay - Myanmar

Contact Business Centre

Mrs. May Thwe Khin
Business Support Executive
+95 9 798 975 853
mandalay@ccifrance-myanmar.org





Our Board of Directors

Executive Committee



Sarah Lubeigt
President

Country Manager
Naos/Bioderma



Pierre Guédant
Secrétaire Général

E&S Working Group
Leader
EDF



Jérémy Damloup
Vice-President

Co-Founder & Director
Akhuka Productions



Nicolas Delange
Chairman of Eurocham

Managing Partner
Yever



Su Su Tin
Vice-President

Managing Director
Exo Travel



Philippe Battlé
Representative at
Eurocham

Country Manager
Accor



Marc Guyonnaud
Treasurer

General Manager
AGS Four Winds

Board Members



Amy Nyunt
Board Member

Managing Director
Netsmart



Julien Le Roux
Board Member

Managing Director
Berim



Ei Khin Khin
Board Member

Managing Director
Banyan Services



Joris Thomas
Board Member

Operations Director
BYMA



Matthieu Glorieux
Board Member

General Manager
Seagram/Pernod Ricard



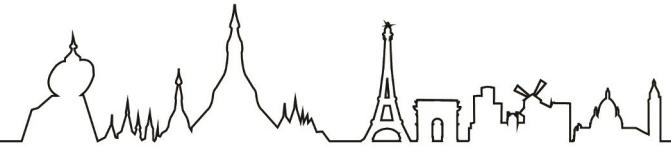
Ye Myat Min
Board Member

CEO
Nexlabs



Han Lynn Aung
Board Member

CEO
LYC Healthcare Centre



Our team



Guillaume Rebiere
Executive Director
director@
ccifrance-myanmar.org

Business Services



Pascaline Griffon
Business & Marketing
Manager
business.manager@
ccifrance-myanmar.org

Finance & Admin



May Myo Thant
Finance & Admin
Manager
finance.manager@
ccifrance-myanmar.org



Aye Su Oo
Membership & Business
Support Executive
business.executive@
ccifrance-myanmar.org



May Thu Naing
Finance Assistant
finance.assistant@
ccifrance-myanmar.org



Su Eaindar Moe Myint
Communication &
Events Executive
communication@
ccifrance-myanmar.org



Saw Pho Se
Admin Officer



May Thwe Khin
Business Support
Executive - Mandalay
+95 9 798 975 853
mandalay@
ccifrance-myanmar.org



Yoon Thit Sar
Business Support
Officer
contact@ccifrance-
myanmar.org

Our CCI Ambassadors

Mandalay



Anthony Myers
General Manager
Pullman Mandalay
+95 9 765 669 104
H9095-GM@pullman-
mandalay.com

Shan State



Paul Cheron
Country Manager
Shan Fusion
+95 9 263 834 419
paul_cheron@hotmail.fr



Cedric Seguin
CEO
Asia First Network
+65 9640 7909
cedrics@asia-fn.asia



Supporting your growth in Myanmar

Our CCI Ambassadors are Members located outside of Yangon, who have agreed to represent us in their regions.

Their missions are:

- To promote CCI France Myanmar in their regions
- To relay our communications in their regions
- To support the local implementation of our services
- To assist our Members developing their activities in their regions, by sharing information and contacts, and by organising meeting with local official and potential business partners



Our Members

Committees

General objectives

- To help our Members sharing similar challenges and goals to meet
- To help our Members to extend their networks
- To create new opportunities for our Members on the market
- To create links and maintain strong relations with local organizations

Human Resources

Projects implemented in 2019

- Publication of the « Human Resources Guide to Myanmar »
- Publication of the Salary Survey
- Organisation of « HR Talks »

Young Entrepreneurs

Projects implemented in 2019

- Publication of the « Entrepreneurs Guide to Myanmar »
- Organisation of the Young Entrepreneurs Awards



Made in France

Projects implemented in 2019

- Meetings with the Myanmar authorities about the Consumer Protection Law
- Organisation of the French Fair with Marketplace

Tourism

Projects implemented in 2019

- Launch of the Salary Survey for the hotel sector
- Organisation of the first edition of the #COMETOMYANMAR Video Contest



Our international networks



CCI France International

With 124 French Chambers in 93 countries, it is the 1st global French network of companies with 35,000 members worldwide.

It also represents the French Chambers worldwide in France before the French authorities, the regional Chambers of Commerce, the companies in France...



Mr. Charles Maridor
 Director Network CCIFI
cmaridor@ccifrance-international.org
 +33 1 40 69 37 60
 8 Rue Pierre Brossolette - 92300 Levallois-Perret - France
www.ccifrance-international.org

Eurocham Myanmar

The European Chamber of Commerce in Myanmar - EuroCham Myanmar - serves as the voice of European business in Myanmar. Its main mission is to advocate member interests with organisations in Myanmar, the ASEAN region and the EU.

EuroCham Myanmar was launched in December 2014 through a grant contract between the EU and a consortium composed of CCI France Myanmar and Eurochambres Brussels.



Mr. Marc de la Fouchardière
 Executive Director
director@eurocham-myanmar.org
www.eurocham-myanmar.org

EXPLORE new opportunities
BUSINESS SERVICES
in Myanmar



BUSINESS SERVICES



**Prospect, settle in and
expand in Myanmar**

**Settle in our Business
Centres**

Approach the market

- *Market studies* - Tailor-made market research reports
- *Tailor-made business missions* – Business matching missions and visits of sites
- *Trade fairs* – Visit of or participation in professional exhibitions
- *Commercial representation* – Timeshare sales agent according to your needs
- *Sourcing missions* – Tailor-made research for suppliers or partners

- *Offices for rent* - Ready-to-use offices, from hotdesks to 6-person offices, including wifi, electricity, 24/7 access, meeting rooms, reception, and direct contact with our team
- *Virtual Domiciliation* - Get a prestigious business great environment by officially domiciling your company in our Business Centre
- *Meeting rooms* - Rent rooms to meet your clients, or to organise your trainings and conferences in Myanmar (capacity of 40 people)

Create a company

- *Counsel & advice* - Legal and economic information for you to prepare your project
- *B2B/matchmaking* - Contacts for you to find the best local partner



Grow in our **COMMUNITY**
OUR MEMBERSHIP PROGRAM
in Myanmar

MEMBERSHIP



**Develop your business
with us in Myanmar**

- *Your logo everywhere* - Join as a Partner Member, and have your logo displayed at every event and in all our communications
- *Advertorial and campaigns* - Have your advertorial and advertisement campaigns shared on our website and on social media

**Extend your network
& your knowledge**

- *Introduction* - Free introduction to contacts and to potential partners
- *Networking events* – Access to our « Members only » joint networking cocktails
- *Morning conferences* – Free participation in our sectorial, business and legal conferences, and in our morning seminars
- *Business Talks* – Opportunity to organise your own event with us

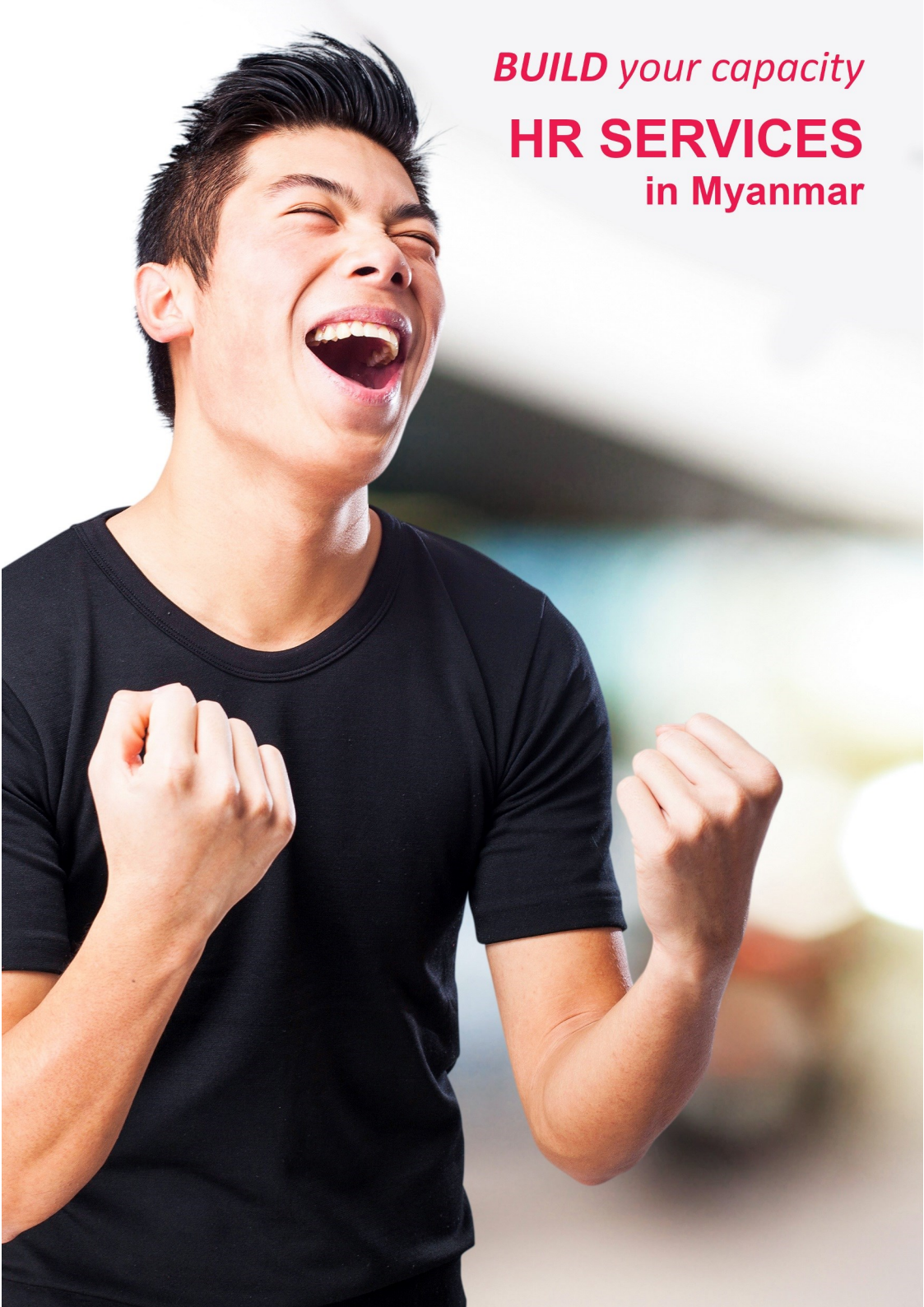
Be visible*

- *Free promotion of your company* - Your presentation in our directory and on our website, your interview in our newsletters, your news shared on social media, ...

**Get exclusive benefits
& discounts on services***

- *Business Centre* - Get access to our meetings rooms and to a hotdesk in Yangon or in Mandalay
- *VIP invitations* - Get free invitations to trade fairs, professional events, executive dinners, ...
- *Recruitment* - Publish your jobs offers for free on our website
- *Discounts* - Get at least 20% discount on our trainings, HR services, offices, meeting rooms,

* Special conditions apply. Please contact us.



BUILD your capacity
HR SERVICES
in Myanmar

HR SERVICES



**Find, engage & retain
your staff in Myanmar**

**Employ your staff in
Myanmar through us**

- *Wage portage* - You are not registered in Myanmar? Employ your staff in Myanmar under CCI France Myanmar. We take care of payroll, taxes, insurances, expenses, and all HR/Admin processes.

Train your staff with us

- *Regular training* - Register your staff to one of our training, in order to help them improve their skills. We have internationally experienced trainers teaching concrete tools to small groups: HR, finance, communication, customer services, sales, executive assistant, management...
- *Tailor-made corporate training* - Contact us to set up a custom-made training adapted to your needs in your own company

**Recruit your staff with
us**

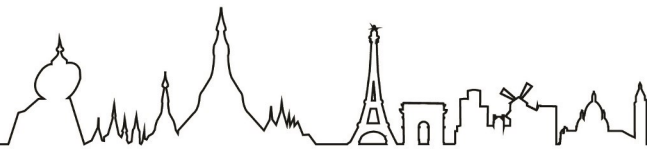
- *Recruitment services* - Tailor-made services including: advice in defining your need, support in preparing the job description, publication and promotion of the job offer, pre-selection of candidates, job interviews, selection of finalists, follow-up until completion of the recruitment process
- *Recruitment platform* - Post your job offer or browse CVs for free on our website
- Internship program

Retain your staff

- *Team building activities* - Support in the organisation of your team building activities and seminars



	Benefits	Partner Mem- bers (\$1,700)	Corporate Members (\$750)	Ordinary Members (\$450)	Organisation Members (\$350)	Individual Members (\$200)	Young Profes- sional (\$150)
EXPLORE new opportunities	Free invitations to trade fairs, international conferences	X					
	Priority for VIP visits, delegations	X					
	Free use of a hot desk at our Business Centre in Mandalay	3 days/month	2 days/month	1 day/month	1 day/month		
	Free introduction to contacts	X	X	X	X	X	X
	Free access to our team in Yangon & Mandalay	X	X	X	X	X	X
	Free access to our Ambassadors in Mandalay and Taunggyi/Inle	X	X	X	X	X	X
	Free access to all our publications and surveys	X	X	X	X	X	X
	Discounts on our Business Centre services (offices, meeting rooms, virtual domiciliation...)	X	X	X	X	X	X
	Discounts and access to services of other CCI France in Asia	X	X	X	X	X	X
Grow in our COMMUNITY	Free full-page advertisement in our Membership Directory	X					
	Logo on every communication (emails, website, events ,...)	X					
	1 post/year on social media to promote you as Partner Member	X					
	Monthly campaign in our Newsletter to promote your products and services	X					
	Priority for registration to exclusive events	X					
	Organisation of 1 "Open Doors"	X	X	X	X		
	Annual advertorial on website and in our newsletter	3	2	1	1		
	Free invitation to AGM cocktail	3	2	1	1	1	1
	Free participation in Connect@Breakfast & Business Talks	X	X	X	X	X	X
	Free presentation in Directory	X	X	X	X		
	Free presentation on Website	X	X	X	X		
	Free interview as "Member of the week"	X	X	X	X	X	X
	Exclusive offer for members	X	X	X	X	X	X
	Possibility to organise Business Talks at CCI France Myanmar	1 FOC/year	20 USD/pers.	20 USD/pers.	20 USD/pers.	20 USD/pers.	20 USD/pers.
Publication of your news on website and social media	X	X	X	X	X	X	
Access to Members Committees	X	X	X	X	X	X	
BUILD your capacity	Free posting of job offers on our website	X	X	X	X	X	X
	Discounts on HR services (wage portage, trainings, recruitment)	X	X	X	X	X	X
	Free participation in our Seminars	X	X	X	X	X	X



France in Myanmar

Embassy of France in Myanmar

102 Pyidaungsu Yeiktha Road - Yangon
+95 1 212 520 / 212 178 / 212 530
mbafrance.rangoun@diplomatie.gouv.fr
www.ambafrance-mm.org

Economic Department

Mr. Jean-Marie Vignaud
Economic Counsellor
jean-marie.vignaud@dgtresor.gouv.fr
+95 1 211 781 - 211 782
www.tresor.economie.gouv.fr

Cultural Cooperation

Mr. Cyprien François
Cultural Attaché / Director of IFB
cyprien.francois@diplomatiegouv.fr
Institut Français de Birmanie (IFB)
340 Pyay Road - Sanchaung Township - Yangon
+ 95 1 536 900 / 537 122 / 535 428
contact@institutfrancais-birmanie.com
http://institutfrancais-birmanie.com

French Development Agency (AFD)

Mrs. Marie-Cécile Thirion
Head of Yangon office
thirionmc@afd.fr
Pyay Garden Office Tower - 2nd Floor - Room 2001 - 346 Pyay Road - Sanchaung Township - Yangon
+ 95 1 536 510
afdyangon@afd.fr
www.afd.fr

Business France

Ms. Géraldine Mabilie
Head of Yangon office
Geraldine.mabilie@businessfrance.fr
+95 9 426 799 525
Ambassade de France
102 Pyidaungsu Yeiktha Road - Yangon
+ 95 1 230 2125
export.businessfrance.fr

French International School - Joseph Kessel (LFIR)

Mr. Boris Colin
Director
61 Inya Myaing Road - Bahan Township - Yangon
+95 1 510 983 / +95 9 457 499 063
boris.colin.directeur@lfir.org
www.lfir.org

French Kindergarten - Les Cahiers Dorés

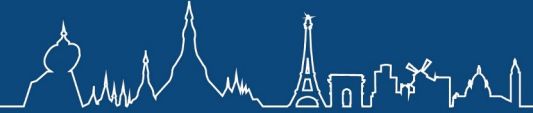
Mrs. Valérie Legueux
Director
+95 9 513 9593
valerie.legueux@gmail.com
39 A Golden Valley road - Yangon
www.facebook.com/
LesCahiersDores.Yangon/

LePetitJournal.Com Birmanie

Mr. Eric Glover
Director
+95 9 793 101 265
eric.glover@lepetitjournal.com
CCI France Myanmar - Times City - Office Tower 2 - 16th floor - Units 1611 & 1612, Between Hantawaddy & Kyuntaw Roads, Kamayut Township - Yangon - Myanmar
lepetitjournal.com/birmanie

Rangoun Accueil

Mrs. Catherine Guillet
rangoun.accueil1@gmail.com
www.facebook.com/Rangoun-Accueil-1518115208405456/



Our Partner Members

CCI FRANCE MYANMAR'S MEMBERS

FLY WITH OUR OFFICIAL AIRLINE PARTNER **AIRFRANCE**

OUR PARTNER MEMBERS





Acteus Group

CONTACT

Singapore - 362 - Upper Paya Lebar Road - #06-11 Singapore 534963
yann.bary@acteusgroup.com
+65 6 282 124 1

Myanmar - N°7, Ground Floor - Nat Chaung Street - 11211 - Tamwe Township - Yangon
www.acteusgroup.com

PRESENTATION

Acteus Group specializes in providing supply chain services to industrial companies operating in Asia Pacific - mainly in the sectors of O&G, F&B, mining and construction.

With a strong track-record and footprint in Myanmar, Acteus group facilitates procurement and supply chain operation for companies having operations in Myanmar and in need of equipment, goods from overseas.

Thanks to its Myanmar establishment - Acteus Myanmar co., ltd - Acteus group is able to cover the complete scope of supply chain (from international sourcing of goods to customs clearance and local delivery in Myanmar). Therefore providing a reliable and efficient solution to industrial companies having a setup in Myanmar.



Action Contre la Faim

CONTACT

Times City – Office Tower 2 – 12th floor -
Between Hantawaddy & Kyuntaw Roads -
Kamayut Township – Yangon – Myanmar

KEY FACTS & FIGURES

In all its activities, ACF adheres to the following principles set out in its charter:

- Independence
- Neutrality
- Non-discrimination
- Free and direct access to victims
- Professionalism
- Transparency

PRESENTATION

In Myanmar, Action Contre la Faim is working to improve nutrition security for children living in communities affected by conflict, marginalization and natural disasters. We are implementing both nutrition specific and nutrition sensitive interventions using a multi-sectoral approach to address both the direct and underlying causes of malnutrition. Currently, our operational areas cover Rakhine and Kayah states and Yangon region.

Action Contre la Faim has worked in Myanmar since 1994. Since then, the programme has evolved gradually into Community Management of Acute Malnutrition (CMAM), integrating Mental Health and Care Practices (MHCP), WASH, Food Security and Reproductive Health components, in order to tackle the underlying causes of malnutrition. Currently ACF conducts:

- Nutritional treatment interventions to directly target malnutrition in locations with a high prevalence of acute malnutrition
- Multi sectorial long-term programs in Food Security Livelihoods; Water, Sanitation and Hygiene; Care Practices and Psychosocial Services to address underlying causes of malnutrition.





SMART FACILITY MANAGEMENT SOLUTIONS



Managing Our Client's NON CORE Business

With its roots in Asia, ADEN is an International Integrated Facility Management (IFM) specialist with over 20 years of industry experience and operational excellence. Our SMART IFM solutions are designed to bring our clients peace of mind, efficiency and quality of life anytime anywhere, including in those remote and challenging areas.



20 years



3 continents
25 countries



1500 clients



26,000 employees
30 nationalities



Strong
Entrepreneur
Culture

Contact us

LinkedIn: ADEN Group | Facebook @adenmyanmar
www.adenservices.com

Aden

CONTACT

No. 47(A), Khine Mar Lar Street - Thiri Yadanar Avenue - Thingangyun Township - Yangon - Myanmar
+95 9 765 415 446
www.adenservices.com
<https://www.linkedin.com/showcase/aden-asean>

KEY FACTS & FIGURES

- Over 20 years in Asia
- 1,500 clients globally
- 23 countries, 3 continents

Aden Services

PRESENTATION

Asia has changed. Asia has evolved. So have the keys to business competitiveness: smart tech, clean energy, IoT and automation. ADEN understands the new reality. We manage assets and workspaces in the commercial, industrial and private sectors with data-driven solutions at every turn. ADEN allows you to focus on core business concerns while we cover the complex needs of a modern facility in one simple contract. Every ADEN solution leverages the transformative power of new tech and big data. Every team in the ADEN network has expertise in the tools and technologies driving business in the new 4.0 economy: Aden Robotics, Adenergy, and more.

ADEN is Asia-born and Asia-centric, with a 20-year history of getting things done in Asia and beyond. ADEN has built a powerful network and is headquartered in Shanghai, China - ground zero of innovation in Industry 4.0. Already boasting AEMO, our award-winning energy optimization and automation platform, ADEN continues to push forward with development of AKILA, an IoT mega-platform that covers the full spectrum of facility management solutions.





"CCI France-Myanmar welcomed us and guided us during our first steps in Myanmar. Before expanding our team and moving to our own place, the business centre was an ideal situation to initiate our development, in a warm yet professional environment. Besides our office, the CCI continuously provided relevant advices and observations about the business context here, through meetings, presentations, breakfast talks... Merci à la CCI et à son équipe!"

**Charles Bouhelier - Southeast Asia
Regional Manager
Artelia Myanmar**



"I have been a member of the CCI and its Business Center for 18 months now. I always enjoy working from their office, especially since they moved to Times City, which offers a modern and economically stimulating environment.

The events organised and co-organised by the French CCI and the other Chambers of commerce allow you to meet interesting people from all countries."

**Maud Glorieux - Founder
My Good Assistante**



CONTACT

42E - Aye yeik Thar Street - Bahan Township
- Yangon - Myanmar
+95 9 976 592 205
afsim2018@gmail.com
www.afsim.eu
<https://www.facebook.com/mona.phonekeng.7>
https://www.linkedin.com/feed/?trk=guest_homepage-basic_sign-in-submit

AFSIM Co. Ltd

PRESENTATION

AFSIM aims to assist with the transformation of the agriculture and food sector in Myanmar.

KEY FACTS & FIGURES

- Clients: private investors, public offices, and ODA projects (ADB, STDF, GIZ, etc.)
- Examples of contracts:
 - Help pharma lab. for accreditation,
 - Value chain studies (honey, F&V, dairy),
 - Prepare MOALI food safety policy,
 - Setup centralized SPS system (Pacific),
 - Inputs on Climate Smart Agriculture (Min. Agriculture of Lao PDR)





Worldwide Movers

You deserve the best



COVERING OVER 141 LOCATIONS AND MORE THAN 94 COUNTRIES, AGS REMOVALS SERVES CLIENTS ON FIVE CONTINENTS AROUND THE WORLD.

AGS MYANMAR

T. +95 9971 377 097

E. info.agsmyanmar@agsfourwinds.com



One International Move with AGS = One Tree Planted



WE SUPPORT

Logistics



MYANMAR

CONTACT

15 - Mya Wut Yi Lane (4) - Mayangone Township -Yangon-Myanmar

+95 1 658 108

marc.guyonnaud@ags-globalsolutions.com

www.agsmovers.com

AGS Four Winds

PRESENTATION

AGS Four Winds Myanmar has been set up in December 2015.

We are part of the AGS group's Network with more than 141 branches in 94 countries.

We are specialized in international door to door removals by sea, air or road.

KEY FACTS & FIGURES

- More than 141 branches in 94 countries
- 70,000.00 families' goods moved per year
- 43 years of experience





FROM YANGON VIA PARIS
**MORE THAN 36 DESTINATIONS
 IN FRANCE**



AIRFRANCE

Air France

CONTACT

AVIAREPS Myanmar Co., Ltd.
 #01-06, 1st Floor - Yuzana Business Tower -
 No 25 - Dhammazedhi Road - Sanchaung
 Township - Yangon - Myanmar

PRESENTATION

Air France is a global airline of French inspiration and its three main areas of activity: passenger transport, cargo transport and aircraft maintenance. From its hubs at Paris-Orly and Paris-Charles de Gaulle airports, the airline operates flights to 195 destinations and 91 countries. Air France is a founding member of the SkyTeam global alliance, alongside Korean Air, Aeromexico and Delta.

Air France is committed on a daily basis to reducing its environmental impact and offering its customers a responsible travel experience. As of January 1, 2020, Air France undertakes to offset 100% of the CO2 emissions generated by its domestic flights. This compensation will take the form of participation in projects certified by recognized organizations.

Trip and Tree by Air France is a programme that allows customers to do something for the planet and reduce the environmental impact of their trip. When purchasing an air ticket on www.airfrance.com, volunteer customers can make a donation of the amount of their choice to finance one of the tree planting projects around the world.

KEY FACTS & FIGURES

Air France together with KLM:

- 101.4 million passengers carried in 2018
- 312 destinations in 2019
- 116 countries in 2019





CONTACT

SPACE Condo - 23 Yanshin Street - Yankin Township - Yangon- Myanmar
 +95 9 404 665 163
 contact@akhuka.com
 www.akhuka.com
 www.facebook.com/akhukaproductions/

Akhuka Productions

PRESENTATION

Akhuka is a full-service film production company based in Yangon. We are a diverse and multicultural team of film-makers, creative storytellers and producers who orchestrate everything to best hook your audience. Working with brands and agencies, we bring energy, soul and passion in narrating visual stories. At our core, we value quality and understand the impact that every visual experience that we craft needs to have on viewer.

Tell us your story, we will bring it to life.

KEY FACTS AND FIGURES

We are a strong team of experts in:

- Writing & Conceptualizing
- Creative Content Production
- Film Makers & Producers
- Editing, Sound Design & Color Grading
- 2D and 3D Animations
- Music Composition



Tell us your story, we will bring it to life . . .

Akhuka is a creative production company based in Yangon. Write film-makers, creative storytellers and producers who orchestrate everything to best hook your audience. Working with brands and partner agencies, we bring energy, soul and passion in narrating visual stories. At our core, we value quality and understand the impact that every visual experience that we craft needs to have on the viewer.

We produce:

- TV Commercials & Corporate Videos
- Radio Commercials
- Online Content Videos
- Commercial Music
- Commercial & Corporate Photography
- 2D & 3D Animations

www.akhuka.com
 contact@akhuka.com
 facebook.com/akhukaproductions



ALLEN & OVERY Allen & Overy

CONTACT

Suite 539/540 - Inya Lake Hotel - 37 Kaba Aye Pagoda Road - Mayangone Township - Yangon - Myanmar
 +95 1 966 262 9
 www.allenoverly.com

PRESENTATION

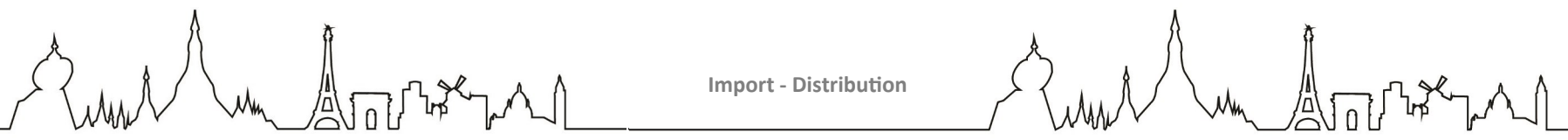
Our service offering is comprehensive, covering all areas of law relevant to foreign investment and our experience includes assisting the Myanmar government develop the country's regulatory landscape.

We established our Yangon office in 2013 as the first international firm, which is staffed by our on-the-ground international lawyers and local government relations team. They are supported by a dedicated team of sector specialists made up of partners and lawyers from the firm's ASEAN offices as well as from Tokyo, Sydney, Perth, New York and London. The firm also boasts one of the foremost international arbitration practices in Asia-Pacific and we are able to provide top-tier advice and assistance.

KEYS FACTS & FIGURES

- 44 offices in 31 countries
- More than 5,400 employees
- In 2016, advised on more than 1500 deals globally





Annam Myanmar

CONTACT

No. 67/A - Myamarlar Street - Thaketa Industrial Zone - Thaketa Township - Yangon - Myanmar
 +95 9 444 435 113
<http://www.annam-group.com>

PRESENTATION

Annam Group distributes fast moving consumer goods (FMCG) in Vietnam, Cambodia and Myanmar. Quality brands are our passion and we represent principals from around the world on an exclusive basis. Annam Group is continuously sourcing high quality, delicious food and beverage products for distribution throughout the region, and we pride ourselves on being the go-to source for globally respected brands.

KEY FACTS AND FIGURES

- More than 50 global FMCG brand
- 2,000 retail clients in the region
- 1,400 committed professionals regionally



Arc Distribution

CONTACT

Singapore - 74A - Tras St - Singapore 079013
 +65 6 222 208 8
www.arc-intl.com

PRESENTATION

Arc was born in the north of France, in Arques, where the Group's headquarters are still located, its Research and Development division and the largest glass production site in the world. Securely anchored in France and its region of origin, Arc manufactures and distributes its products on all continents. The Group has production sites in China, Russia, the United Arab Emirates and the United States. It shines through six brands (Arcopal, Cristal d'Arques Paris, Luminarc, Eclat, Arcoroc and Chef & Sommelier) by putting the beautiful in the reach of all, everywhere in the world.

KEY FACTS & FIGURES

- 10162 Glassworkers
- 849 million euro of turnover in 2015
- 4.3 million pieces manufactured every day worldwide





Archetype Myanmar

CONTACT

Times City – Office Tower 2 – 17th floor – Units 11/12
 Between Hantawaddy & Kyuntaw Roads
 Kamayut Township – Yangon – Myanmar
 +95 9 507 344, EXT-159
 info.ygn@archetype-group.com
 www.archetype-group.com

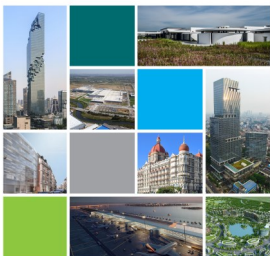
PRESENTATION

Since 2002, Archetype Group expertise covers, as multidisciplinary consultant, key construction sectors such as buildings & real estate, industry & manufacturing and energy & infrastructure. With more than 1,100 employees, Archetype Group is one of the largest private construction consultancies in Asia Pacific with core services in Architecture & Master Planning, Building & Infrastructure Engineering, Industrial & Process Engineering and Project, Construction & Cost Management.

The Group has 23 offices in 15 countries with more than 1500 project references worldwide.

KEY FACTS & FIGURES

- Archetype Myanmar is registered under the MIC as a 100% foreign own company in 2012 December and with more than 60 employees provides from Myanmar turnkey construction consultancy services with already over 100 references.



Artelia

CONTACT

No. 99/A - 2nd Floor - Room 2C - Shwe Pa-dauk Condo - Myay Nu Street - Sanchaung Township - Yangon – Myanmar
 +95 9 789 660 035
 contact@mm.arteliagroup.com
 www.arteliagroup.com
 www.facebook.com/arteliagroup
 twitter.com/arteliagroup
 www.linkedin.com/company/1943059/

PRESENTATION

Artelia conducts its Consultancy/Engineering assignments in nine markets: building construction (Design, Project Management, Construction Management), water (Hydrology, Water Resource Management, Irrigation, flooding), environment (Environmental & Social Impact Assessments, Environmental Management Plans, Climate Change), energy (Power and Distribution, Hydropower, Solar), maritime (Ports and Harbours), urban development (Water treatment, Waste Management), transportation, industrial facilities and multi-site projects.

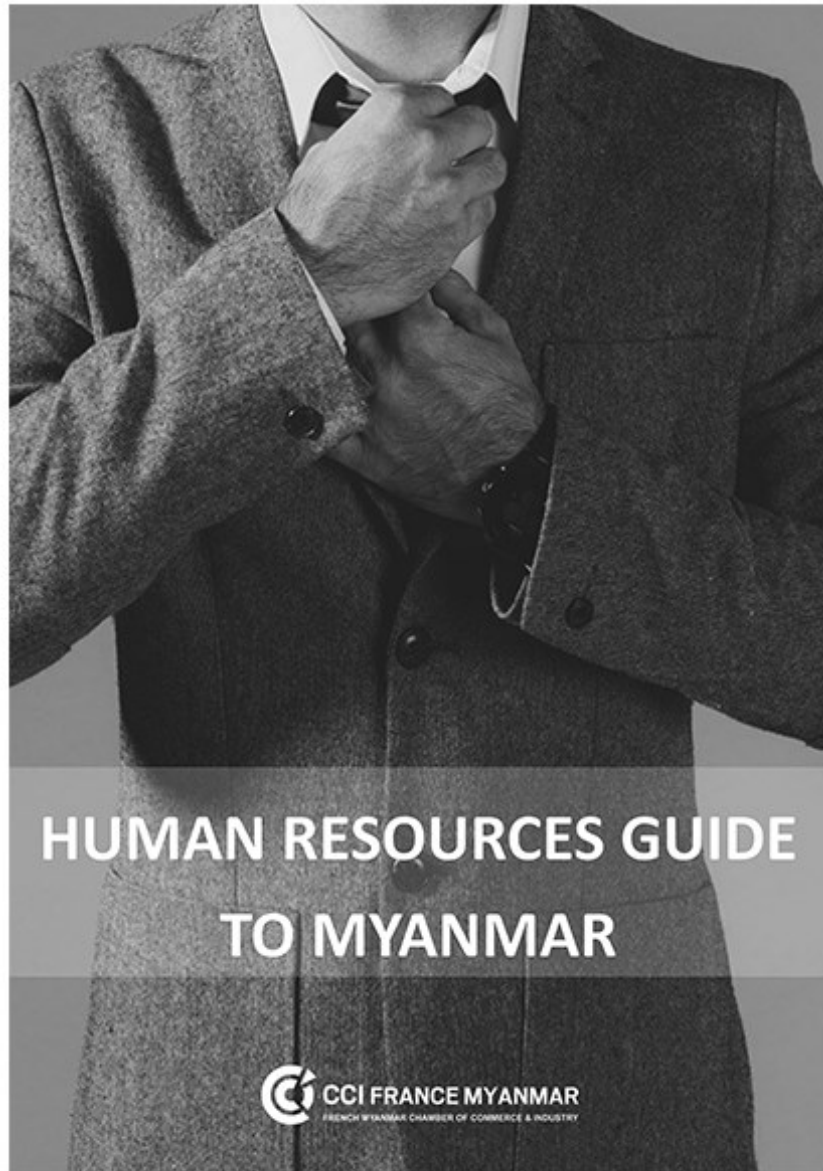
Artelia has been active in Myanmar since 2004 and has performed various projects in different sectors with a mix of local and international experts. Artelia Myanmar is also registered at Ministry of Natural Resources and Environmental Conservation as Transitional Consultant since 2017.

KEY FACTS & FIGURES

- 4900 employees in 36 Countries
- Turnover: €520M (2016)
- Certified ISO 9001, OHSAS 18001, ISO 14001



Recruitment, contracts, taxes, leaves, retention...
All you need to know about HR in Myanmar



Download our guide for free
www.ccifrance-myanmar.org

They chose us



"My first membership goes back to AFMA for which I led the very first management trainings. Already very involved in knowledge and skills sharing, the CCI has only evolved in this direction to be able today to offer training in all fields of activity.

The Chamber offers great availability and listens to its members. Guillaume and Pascaline are always takers of good ideas allowing to put forward the French companies and thus help us to develop our French know-how in Myanmar.

Helpful also during difficulties, I can count on their advices and network."

Myriame Honnay - Partner

JM Wine



Audi Myanmar — Automotive Asia (Myanmar)

CONTACT

Pre-opening address - Room 7 - Bldg 5 - MICT Park - Hlaing (11052) - Yangon - Myanmar

Audi Yangon - 2 Pyay road - 6 miles - Hlaing township - Yangon - Myanmar
www.audi.com.mm
<https://www.facebook.com/AudiMyanmar/>

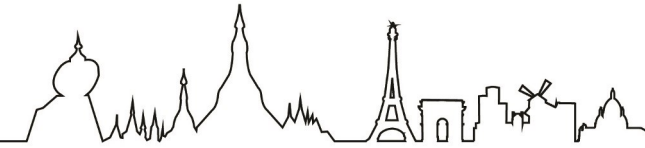
PRESENTATION

Audi is coming to Myanmar to offer its world-renowned cars and services on a site ideally located at #2, 6 miles Pyay Road, in front of Inya Lake, Yangon. Myanmar investors teamed up with French based CFAO Group as majority shareholder under the name Automotive Asia (Myanmar) Limited to become the sole official Audi importer, distributor and dealer in Myanmar.

Featuring Audi progressive design, sporty feel and sophisticated style, all Audi cars to be launched in Myanmar will feature engine delivering high torque, efficient power and low fuel consumption. Lightweight design combines optimized metals to ensure solid, safe and agile chassis making Audi cars enjoyable to ride. Audi cars officially imported in Myanmar will benefit from a warranty with no limit on mileage during the first three years.

KEY FACTS & FIGURES

- Audi AG:
- 1.845 million vehicles delivered in 2019
 - 90,000 Employees
 - Total revenue of €59.2 billion (2018)



Audier & Partners

CONTACT

Times City – Office Tower n°2 – 16th Floor – Unit 6
 Between Hanthawaddy & Kyuntaw Road
 Kamayut Township – Yangon - Myanmar
contact@audierpartners.com
www.audierpartners.com
www.linkedin.com/company/3553226/

KEY FACTS & FIGURES

- Long presence in South-East Asia and Myanmar
- A&P advises on landmark projects in Myanmar notably in the telecommunication, media and broadcasting, and transportation sectors.
- Entrepreneurial approach to emerging markets



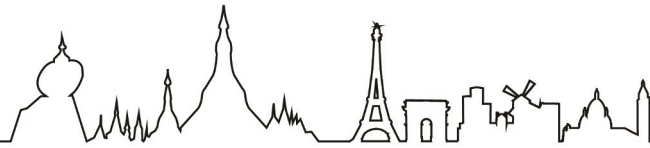
PRESENTATION

Audier & Partners is an international law firm founded by Nicolas Audier, member of the Paris Bar, who headed the Vietnam practice of a major international law firm for more than ten years, and four other Partners from the United Kingdom and France.

Audier & Partners has significantly expanded its operations in Myanmar in 2012.

Our team comprises talented lawyers and advisers from various countries including France, the United Kingdom, Vietnam and Myanmar, who have a broad range of technical skills and expertise, gained from working on landmark deals in Vietnam and South East Asia. Our team provides first rate advice and assistance to clients on international and local law matters and has particularly strong expertise in corporate and commercial, mergers and acquisitions, and dispute resolution.

Our clients are international leaders in a range of sectors including real estate, manufacturing, agribusiness, hospitality, infrastructure, distribution and media.



"I arrived in Yangon 2 years ago to open AGS Four Winds in Myanmar. I was in contact with the CCI France Myanmar even before putting foot in Yangon. They helped me understand the local environment and introduced me to various companies which are now my partners or my customers. In order to share and give back part of what I received, I am now Treasurer of the FMCCI."

Marc Guyonnaud - Treasurer

AGS Four Winds



"We joined the CCI France Myanmar in 2017 and found our Membership to be extremely valuable. The Chamber is very active, providing us many opportunities to get further engaged in the Myanmar market, generally, as well as specifically with target companies we hope to do business. We also enjoy meeting other members, sharing best practices and developing new relationships in the country. Thank you!"

Vincent Lorentz - Business Development

InsurExcellence



AWEI • METTA
YANGON

CONTACT

Pun Hlaing Estate - Hlaing Tharyar Township
- Yangon - Myanmar
www.awei-metta.com

Awei Metta

PRESENTATION

Set in the tropical landscape of Pun Hlaing Estate, home to the finest 18-hole Gary Player golf course, Awei Metta is a new Urban Golf Resort benefiting from the luxury of spaces and charming environment. Surrounded by lush green flora and fauna, Awei Metta is the perfect place to escape. Located on the banks of Pun Hlaing & Hlaing Rivers, this exclusive resort caters to leisure travellers looking for a peaceful atmosphere to recharge and rejuvenate or a venue to celebrate special corporate events or private anniversaries, honeymoons or weddings.

Food aficionados will be delighted to find a renowned healthful cuisine, eclectic and seasonally fresh menus, and a splendid selection of cigars, wines and spirits.

Housing a collection of luxurious amenities and services, Awei Metta is the perfect choice for the business travellers wishing to combine or extend their trips with some relaxation and freshness. Club house facilities include wellness spa treatments, gym, outdoor pool and tennis courts.





AYA Bank

CONTACT

416 - Corner Of Maharbandoola Road & Maharbandoola Garden Street - Kyauktada Township - Yangon- Myanmar
 +95 1 370 500
 info@ayabank.com.mm
 www.ayabank.com

KEY FACTS & FIGURES

- Leading bank in Myanmar through pursuit of excellent and long term sustainable growth
- Fast, reliable, honest banking relationships at reasonable cost.
- Offers the full range of retail and commercial banking products and services

PRESENTATION

AYA Bank was licensed by the Central Bank of Myanmar on 2 July 2010 and relicensed under the Financial Institutions Law 2016 as a full service universal bank. The bank has grown rapidly over the past seven years to become the second largest in the country, with [234] branches, [1.4m customer], Kyat [4.7] trillion customer deposits and [150 billion] Shareholders' Equity as at the end of September 2017. Top 100 depositors represent about 6% of total deposits, underlining the general public's confidence in the bank. For the years ahead, the bank will continue to extend its branch network throughout Myanmar while concurrently investing in state-of-the-art Core Banking, Digital Banking and Fintech platforms. AYA Bank aims to provide uniform Omni-channel interface offering innovative products and services across all customer segments. AYA Bank will also continue to focus on deepening relationships with customers, providing best-in-class customer service, and leveraging technology as the enabler to rapidly expand the customer base. The bank also aims to further strengthen its governance, risk and compliance structure as a measure to ensure balance and sustain growth.



Banyan Green Services

CONTACT

No. A-6-2 - Building A - Anawrahta Complex - Pyay Road - Kamayut Township - Yangon- Myanmar
 www.banyangreenservices.com
 Twitter: @greenlotusAsia

KEY FACTS & FIGURES

- Lobbying for green solutions for Myanmar
- 12 staff, mostly Myanmar
- 4 on-going projects, mostly in renewable energies



PRESENTATION

We are a Consultancy Service Provider, specialised in Green Business Strategy.

We are mainly working with Green activities European groups, Myanmar leading construction companies, and other Projects developers.

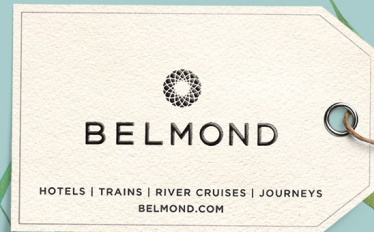
We are cooperating with Public Authorities like YCDC and MCDC, and even Ministries: MOEE for Renewable Energy Business, MOALI for rural development, MONREC for Green urban planning and climate change adaptation solutions.

We have strong experience on admin processes, starting businesses, office work, database management system, event organising and public relations.

BGS is a quite recent business (4 years), but based on former successful individual stories, both from Myanmar and French side, and has develop a very substantiated network of business and civil society relations in Myanmar, especially surrounding event organising and strategy management issues.

BELMOND GOVERNOR'S RESIDENCE YANGON

Nothing can prepare you for the grandeur of an exclusive visit to the Shwedagon pagoda. Let it sink in, and reminisce over a classic cocktail at the lantern-lit Mindon Lounge.



Hospitality



BELMOND
GOVERNOR'S RESIDENCE
YANGON

Belmond Governor's Residence

CONTACT

No.35 - Taw Win Road - Dagon Tsp - Yangon
- Myanmar
+95 9 230 209 2
info.tgr@belmond.com
<http://www.belmond.com>

PRESENTATION

Originally built in the 1920s by the Balthazar brothers, wealthy Armenian merchants of old Rangoon, this beautiful teak wood mansion later became the official residence of the Governor of Myanmar's Kayah State. In the 1990s, the building was converted into a Luxury Hotel as a Belmond Governor's Residence. Facilities at Belmond Governor's Residence include complimentary high-speed wireless Internet access in public areas and all accommodations, two restaurants and bars, a library, accessible facilities include business services, laundry, bicycle rental and 24-hour room service and concierge.

KEY FACTS AND FIGURES

- Exclusive Place
- Personalized and Friendly Service
- Luxury Escape





CONTACT

Times City - Office Tower 2 - 17th floor -
Units 1711 & 1712 - Between Hantawaddy
& Kyuntaw Roads - Kamayut Township -
Yangon - Myanmar
+33 6 45 27 99 73 , +95 9 789 388 149
international@berim.fr
<http://www.berim.fr/en>
https://www.facebook.com/Berim-Asia-122781318313438/?ref=br_rs
<https://www.linkedin.com/company/berim>

BERIM

PRESENTATION

BERIM was founded in 1948 to help communities meet the challenges of post-war rebuilding. BERIM's staff of 400, including 280 engineers, managers and senior technicians, makes us one of France's leading multidisciplinary engineering firms with our main services consulting, project management and technical assistance.

BERIM initiated the first activities in Myanmar in 2013 and has been participating in the studies of different urban issues, engaging in both international development aids and provision of services to private clients: solid waste management in Bago, water supply system in Mandalay and urban master plan in Yangon.

BERIM MYANMAR COMPANY LIMITED was subsequently created in 2016 to increase the activities of its teams in the sustainable development of cities across Myanmar.

KEY FACTS & FIGURES

- 70 years of experience
- Over 5,000 urban projects delivered
- 20 years in Asia
- 400 employees



Bioderma/ Naos/ Mintha Care

CONTACT

France - 355 Rue Pierre Simon Laplace
13593 Aix-en-Provence
Myanmar - Times City – Office Tower n°2 –
17th Floor – Units 1
Between Hanthawaddy & Kyuntaw Road
Kamayut Township – Yangon - Myanmar
+95 9 541 964 0
sarah.lubeigt@naos.com
[www.facebook.com/
OfficialBiodermaMyanmar/](http://www.facebook.com/OfficialBiodermaMyanmar/)
www.naos.com/en/
www.bioderma.com/en

PRESENTATION

Bioderma is one of the main leading French dermo-cosmetic brands. Created in 1977, it is today among the top 10 worldwide brands in dermo-cosmetics and is present in over 100 countries. In Myanmar, Bioderma opened an affiliate structure under the name of Mintha Care Co., Ltd in Yangon in September 2017. Bioderma philosophy is as follows: Biology at the service of Dermatology.

Since the beginning and even more so since the 1990's, the laboratory has designed benchmark products based on key innovations offering new options to meet the expectations of dermatologists and the needs of their patients. These innovations have covered the areas of sensitive skin, oily skin, dry skin, dehydrated skin, photo protection (solar), hair and cell regeneration. For more information on the brand, please visit: <http://www.bioderma.com/en>

KEY FACTS & FIGURES

- 2000 employees around the world in 2017
- Prescribed by 44 000 Dermatologists
- Available now in Myanmar since 2018





WE DELIVER GLOBAL LOGISTICS: lean and agile solutions create value for our customers in their markets. Digitalized supply chain allows smart data processing to boost decision making and ensure the full visibility of operations. What makes Bolloré Logistics different is our entrepreneurial spirit and individual commitment that drive high added value and pragmatic solutions.

THAT'S PEOPLE-POWERED INNOVATION



Bolloré Logistics

CONTACT

Room No. 604 & 606 - 5th Floor -Building 15
- MICT Park - Universities Hlaing Campus-
Hlaing Township - Yangon - Myanmar
+95 1 933 921 1
mm@bolloré.com
www.bolloré-logistics.com

KEY FACTS & FIGURES

- Expertise in wide range of sectors
- A worldwide network of experts
- Customised operational tools, clear-cut processes and logistic techniques

PRESENTATION

Bolloré Logistics is a global leader in international transport & logistics. Constantly adapting to its customers' changing needs, the company has enriched its expertise to become a tier-one supply chain partner and one of the top 10 transport and logistics companies in the world with the largest integrated logistics network in Africa. Bolloré Logistics delivers custom-fit solutions with a high added value that draw on an in-depth experience and understanding of different industries, as well as the constant quest for improvement and optimization that is central to the company's own culture and values. We match the needs of import and export companies around the world, providing complex supply chain management solutions for major groups and international shipment services for SMEs. Our global offer is built around its comprehensive and integrated expertise in five services: Multimodal Transport, Customs and Regulatory Compliance, Logistics, Global Supply Chain and Industrial Projects.



BRED Bank

CONTACT

Times City – Office Tower 2 – 16th floor –
Units 1611 & 1612
Between Hantawaddy & Kyuntaw Roads
Kamayut Township – Yangon – Myanmar
+95 1 860 430 1
+95 9 513 641 9
aunghantoo@hotmail.com
dsavariau@gmail.com
www.bred.fr/pdf/groupe-bred/profil-groupe-bred

PRESENTATION

BRED is a cooperative Banque Populaire, supported by its 165,000 members and 3.7 billion euros of equity.

The BRED Group has 5,500 employees, 25% of which are located outside France and in French overseas collectivities, offering services in retail banking, corporate banking, private banking, asset management, securities trading, an insurance company and international banking via its subsidiaries and international trade. Its core business is commercial banking in France and French Overseas Collectivities, where it pursues targeted growth in the Horn of Africa, Oceania and in Asia. It also has representation offices in Myanmar and Ethiopia, in addition to equity interests in a number of banks in these various regions of the world.

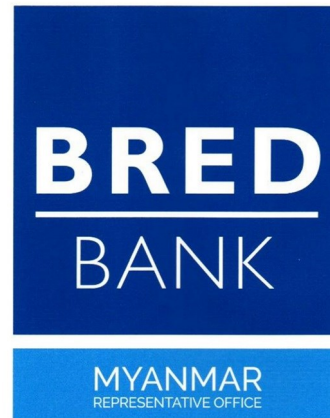
BRED maintains long-term relationships with more than one million clients. In addition to loans, investments and day-to-day banking, it offers all of its customers the products and services provided by its trading desk, insurance company and asset management company, in addition to those offered by the specialist subsidiaries of the BPCÉ Group.

KEY FACTS & FIGURES

- 165,000 members, 3.7 Billion Euros of Equity
- One billion euro in NBI (€ 1,095M)
- +6.9% (excluding non-recurring items)
- 2016 New Record

Start with BRED

Grow with BRED



ONE BANK - The Group BRED



PROJECT PRESENTATION

03/2018



Mr. Julien ESCH
Managing Director

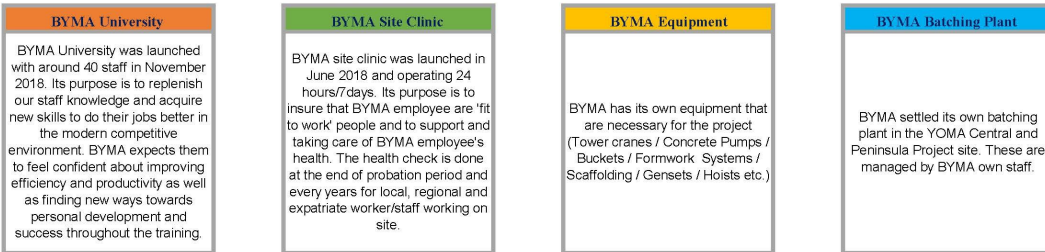
Mr. Joris THOMAS
Operations Director

As part of a globally-respected network of construction-related companies, BYMA has the support, resources and technical know-how to complete the most technically demanding

For BYMA, 2010s is a decade to establish the credentials as a leading and respectable design and build partner of iconic and top quality buildings in Myanmar.



These projects will transform Yangon into a truly international city that will continue to serve as the gateway to the rest of Myanmar



The BYMA People

BYMA is a multicultural company represented by 13 different nationalities working all together, with 92 % of our 891 Employees being from Myanmar, the objective being to get Myanmar people leading the company within few years.

Local Staff	281	Expatriate Staff	72	Worker	538
-------------	-----	------------------	----	--------	-----

DOF/ 17. Dec. 18

Construction



A Joint Venture between Dragages(S) and SPA-PM

BYMA (Bouygues Construction)

CONTACT

Room 375 - 4th floor - IMA Building - Bogyoke Aung San Road - Pabedan Township - Yangon - Myanmar
+95 1 925 387 3

PRESENTATION

BYMA is a design and build contractor, a joint venture between Dragages Singapore (Subsidiary of Bouygues Construction) and SPA Project Management (Subsidiary of YOMA Strategic Holding). BYMA brings together the local expertise and knowledge of SPA Project Management and the large-scale international construction experience of Dragages Singapore, delivering high quality projects to our clients.

Bouygues Construction is a global player in construction, with operations in more than 80 countries. It designs, builds and operates projects in the sectors of building, infrastructure and industry. As a responsible and committed leader in sustainable construction, Bouygues Construction sees innovation as its primary source of added value: this is "shared innovation" that benefits its customers at the same time as improving its productivity and the working conditions of its 50,100 employees. Bouygues Construction established its strong foothold in Asia Pacific through various entities and Bouygues Myanmar (BYMA) is part of its business lines.





Camusat

CONTACT

1 - Moe Kaung Road - 14 Ward - Yankin Township - Yangon - Myanmar
 +95 9 977 872 688
 contact.myanmar@camusat.com
 www.camusat.com
 www.facebook.com/camusat/
 fr.linkedin.com/company/camusat

KEY FACTS & FIGURES

- Operating in 35+ countries
- Over 2,700 employees worldwide including 645 employees in Myanmar
- Generating €180 M of turnover (2018)

PRESENTATION

Camusat is a key player in telecom and power **infrastructure** sectors.

Our expert teams can design, build, energize as well as operate and maintain any telecom infrastructure

As a premium **turnkey solution telecom** provider, we manage all aspects of telecom site implementation project: from site acquisition and planning, to design, construction and installation. Our expertise also includes modification and reinforcement of existing towers.

Camusat provides turnkey solutions for **off/on-grid power generation**, reducing OPEX and accelerating the return on investment. Our large pool of global and local teams, certified by the leading equipment vendors, make us the reliable choice for any network deployment, using multi-vendor and multi-technologies wireless solutions.

Camusat sustains complex turnkey **fiber optic** projects worldwide through all phases: from network planning, end-to-end design up to large scale implementation of physical infrastructure.



Canal+ Myanmar

CONTACT

Parkside One Building - No. 271-273 - Baggay Street - Sanchaung Township - Yangon - Myanmar
 Facebook - CANAL+ Myanmar FG
 Instagram - @canalplusmm

KEY FACTS & FIGURES

- 7 Canal+ Stores in Myanmar
- 9 In-house Channels
- Launching of "Canal+ Kyi Lite" which is a TV Guidebook on 25th November 2019
- Launched a Burmese version of My Canal OTT television service in 2019



PRESENTATION

Forever Group and CANAL+ GROUP, a leading group of Pay TV in France & major pay TV operator in more than 35 countries and with more than 14 M subscribers over the world, create CANAL+ Myanmar FG Ltd dedicated to commercialization and marketing of new Pay TV services with an exclusive offer of channels, including channels locally produced combined with third party international channels targeting all market segments.

CANAL+ Myanmar established partnership with performing and successful groups of channels with which it has some exclusivity in Myanmar. CANAL+ Myanmar includes in its offer international channels from groups as Celestial Tiger, Sony, Blue Ant, Discovery, Turner, Viacom, A&E Network, Rewind Network, Scrip Network, NBC Universal etc.

The content is localized (dubbed, voiced over or subtitled) or directly ordered and produced in Myanmar through local partners and international experts in TV contents translation. It offers a large variety of contents and will allocate a significant part of its investments to locally produced content.



Carrefour MYANMAR



Address : No(3), Yadanar Road,Michaung Kan 3rd Quarter, Thingangyun Township, Yangon.
Contant : +951- 571 643, +959- 977 754 355

Retail - FMCG



CONTACT

3 - Yadanar Road - Mi Chaung Kan 3rd Quarter - Thingangyun Township - Yangon - Myanmar

Carrefour

PRESENTATION

Super Seven Stars International Trading Company is carried out the International Carrefour Brand as a franchise with a new driver of growth for this Group of companies in Retail-FMCG industry. As per as the 2 store formats of Carrefour Myanmar,MAXI Carrefour Wholesale Cash & Carry (Atacadao model) will aim to sell large product volumes on Food/Beverages and some non-food products for responding to the basic needs of daily life at very low prices. And Carrefour Easy Convenience Stores (Carrefour Proximity model) will sell some good range of products for fast consuming needs and provide new services with better conveniences for a total new consumer shopping experience.

KEY FACTS & FIGURES

- First global retailer entering into Myanmar market
- Will bring new shopping experience through new store format and concept
- Society and citizen business oriented





CONTACT

UFC (Union Financial Center) - Tower A & B
- 46 Corner of Mahar Bandoola Road &
Thein Phyu Road - Botahtaung Township -
Yangon - Myanmar
+95 1 231 7770
www.cbbank.com.mm
facebook.com/CBBankmyanmar

CB Bank

PRESENTATION

CB Bank is one of the largest leading private banks in Myanmar established in 1992. Over 28 years, CB Bank has grown from 33 employees to over 9,000 employees and has opened over 245 branches (As of January 2020).

We offer supply chain financing solutions, cash management solutions, trade finance & treasury services, long-term & short-term financing, and working capital financing to multinational companies, local corporates and SME clients operating throughout the country. We have decades of experience in helping companies grow with our banking solutions. Our clientele are from the industries such as manufacturing, telecommunications, hotel & tourism, FMCG, real estate & construction, energy and other sectors.

KEY FACTS & FIGURES

- Mobile Banking: Agent over 2,000 Agents
- One million mobile users



CONTACT

No. 08-03 - Kantharyar Office Tower - U
Aung Myat Street - Mingalar Taung Nyunt -
Yangon - Myanmar
www.cityholdings.com.mm
<https://www.linkedin.com/company/cityholdings-co-ltd/>

City Holdings Limited

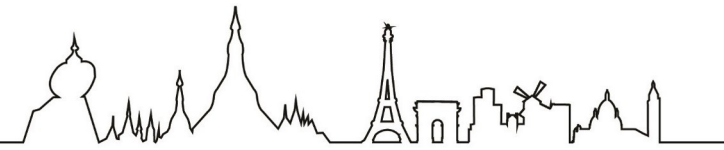
PRESENTATION

City Holdings is the holding company for Myanmar's leading consumer business. Companies within the City Holdings group are market leaders at all points in the consumer journey, from agriculture and manufacturing to distribution, and from retail to tech & data solutions.

The group comprises the following sectors:

- **Retail**, including City Mart, Ocean, marketplace, City Care and City Express banners
- **Food & Beverage**, including Seasons Bakeries and Cafes
- **Distribution (FMCG)** comprising Pahtama Group
- **Distribution (Premium)** comprising Premium Distribution
- **Property** comprising City Properties
- **City Accelerator**, the home for our Growth Sectors, including Agriculture, Manufacturing, Transport & Logistics, Tech & Data and Finance





CMA SHIPS

**CMA CGM
GROUP**

OUR MISSIONS

NEW BUILDING: projects and contractual management including planning, coordination, execution and cost control of construction projects.

SOLUTIONS: Anticipate change, innovate and enhance operations, energy and environmental fleet performance.

OPERATIONS: Operate our vessels safely, in a cost-effective way, with an efficient and highly skilled crew.

FLEET UPGRADE: Carry out drydock or afloat repairs, Class renewals, improving Fleet performance and compliance with new regulations.

**CMA SHIPS
MYANMAR**

CMA Ships Myanmar

CONTACT

No. 84 - Pan Hlaing Street - Sanchaung Tsp -
11111 Yangon - Myanmar
+95 9 454 825 076
ho.pdumas@cma-cgm.com
www.cma-cgm.com

PRESENTATION

CMA Ships is a wholly-owned subsidiary of CMA CGM in charge of owned vessels management : new building, maintenance, procurement and crewing, sharing CMA CGM group values: boldness, initiative, imagination and integrity.

CMA Ships Myanmar office is operating since september 2018, main activity is crewing and employ today more than 400 Burmese seafarers sailing on 22 CMA CGM vessels all over the world, from messman to Captain.

The target for 2021 is to have 26 vessels managed and reach 550 seafarers employed and CMA Ships objective is to set the bar higher and lead the Container Shipping Industry.

KEY FACTS & FIGURES

- 194 vessels managed, included 22 in Myanmar
- 480 employees ashore, included 7 in Myanmar
- 8500 seafarers, included 400 in Myanmar





CMA CGM

CONTACT

221 - Sule Pagoda Road - SULE SQUARE -
13#07 - Yangon- Myanmar
+95 1 925 506 3/64/65/66/67
rgn.marketing@cma-cgm.com
www.cma-cgm.com/local/myanmar

PRESENTATION

CMA CGM Group is a world leader in shipping and logistics. Headquartered in Marseille, France, more than 500 vessels serve more than 420 ports globally. The Group employs a total of 110,00 people across 160 countries in its network of 755 offices and 750 warehouses.

Operating in Myanmar since 2014, CMA CGM Myanmar is proposing short and long haul coverage to main destinations through its four brands.

-CMA CGM & APL: Major carrier for US, Europe, Latin American, Middle East and Indian-Subcontinent

-ANL: The specialist in Australia, Papua New Guinea and New Zealand

-CNC: Intra-Asia Specialist

KEY FACTS & FIGURES

- Frequency: 3 weekly departures out of Yangon for connection to main hub (Singapore/Port Klang)
- Reliability: CMA CGM Group is committed to maintaining the highest service reliability
- Efficient service: instant quotations available 24/7 through My Prices on e-business platform, including booking, documentation, container tracking, invoicing, and payment



Conyat Create

CONTACT

Ground Floor- Pyi Yeik Thar Condo - No. 499/A - Pyi Yeik Thar Street - 8 Ward - Kamaryut Township - Yangon - Myanmar
+95 9 892 007 441
inquiry@conyatcreate.com
www.conyatcreate.com
www.facebook.com/ConyatCreate/
www.linkedin.com/company/conyat-create/

PRESENTATION

Conyat Create, is a women-led team of expert consultants, providing businesses in Myanmar with the tools and services to create a positive impact on the environment and communities.

We provide expert consulting and technical services to help businesses address complex social and environmental issues, using in-depth fieldwork and industry based research. Our wide-range of services include development and implementation of stakeholder engagement strategies, grievance redress mechanisms, CSR strategies, and social and environmental impact assessments. We also design trainings and programs to build capacity where our clients need it most.

In addition, we create community outreach programs and initiatives to help build stronger and more resilient communities in Myanmar.

KEY FACTS & FIGURES

- First female-led sustainability consultancy
- 20 years experience working in Myanmar
- Local and international experts
- Myanmar and English languages





Crown Advanced

CONTACT

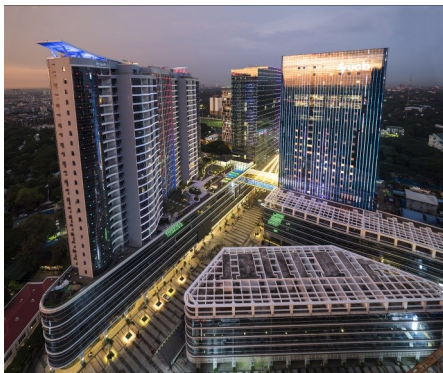
Times City – Office Tower 3 – Level 7 –
Between Hantawaddy & Kyuntaw Roads -
Kamayut Township – Yangon – Myanmar
+95 9 765 800 800
timescity@gmail.com
www.timescity.com.mm

PRESENTATION

Times City is the most luxurious condominium complex in Yangon including premium office spaces, Residence towers, Times Mall Shopping Center, Jewelry and Luxury Mall, Cinema, Playground Area, Training Centers, Gyms, Shophouses, and much more. This compound is renowned as modern, convenient, safe, remarkable living which is located in the heart of Yangon’s financial district, between Hantharwaddy Road and Kyuntaw Road. For more information please check in www.timescity.com.mm.

KEY FACTS & FIGURES

- Largest law firm in the world with more
- 7 Acre Project Area
- 7 Buildings
- 178+ Office Spaces
- 200 Apartments
- 850+ Shops
- 3 Property Awards



Dentons Myanmar

CONTACT

Times City – Office Tower 2 – 16th floor –
Unit 1 - Between Hantawaddy & Kyuntaw
Roads - Kamayut Township – Yangon – My-
anmar
+95 9 750 107 880
dml-mm@dentons.com
www.dentons.rodyk.com

PRESENTATION

Dentons Myanmar Limited (DML) offers a broad range of corporate and commercial legal services across all industries, with a focus on market entry, investment, development and finance activities. DML is set up to equip our clients, both foreign and domestic businesses – with a valuable and holistic perspective on the legal environment in Myanmar. Our ability to supplement our in-country team with lawyers from all over the world enables us to provide a depth and breadth of services to clients on the ground in Myanmar.

KEY FACTS & FIGURES

- Largest law firm in the world with more than 10,000 lawyers serving 81 countries
- Leader on the 2017 Acritas Asia Pacific Law Firm Brand Index
- DML works closely with Dentons Rodyk, Singapore’s longest established full service commercial law firm, constantly ranked on various prestigious legal directories





Dextra Transport

CONTACT

Times City – Office Tower n°2 – 16th Floor – Units 6
 Between Hanthawaddy & Kyuntaw Road
 Kamayut Township – Yangon - Myanmar
www.dextragroup.com

PRESENTATION

We are specialized heavy / project freight forwarders established in Myanmar, Thailand and Vietnam for over 20 years. Dextra is part of WCA World and IFLN networks, so we are able to handle goods from/to virtually any place in the world.

We are moving cargo by road, air, sea, river way, rail, geared vessels, barges, semi-submersible vessel for which we are also conducting loading/unloading & load outs. All our transport, load outs and lifting operations are supported by detailed method statements & surveys approved by DNV.

Besides being a project forwarder, we have an in-house engineering team, with certified engineers, who are designing, calculating and manufacturing soft and hard sea fastenings, grillage, lifting frame and spreader bars.

KEY FACTS & FIGURES

- Import of equipment from Thailand and Indonesia



DFDL Myanmar Limited

CONTACT

134/A - Than Lwin Road - Golden Valley Ward(1) - Bahan Township (Box 729 GPO) - Yangon - Myanmar
 +95 1 526 180
myanmar@dfd.com
www.dfd.com
<https://www.facebook.com/DFDL.Legal.Tax>
<https://www.linkedin.com/company/dfd>
<https://twitter.com/dfdlegalandtax>

PRESENTATION

Being one of the oldest foreign firm, DFDL is best placed to advise Local and International companies on their investments in Myanmar.

DFDL's experienced lawyers and tax advisers, provide efficient, effective and practical advisory services at an international standard, clubbed with personal, in-depth knowledge of the local environment. DFDL has acquired an outstanding reputation for providing integrated and solutions-oriented legal and tax advisory services. DFDL is also actively involved, in tandem with international development agencies and local jurisdiction stakeholders, in developing the legal and regulatory environment of the emerging markets in which we operate.

KEY FACTS & FIGURES

- Founded in 1995, one of the oldest foreign firms in Myanmar, comprises more than 20 lawyers and advisers in Yangon and Naypyidaw.
- The first leading international law firm developed throughout the Mekong region, with a dedicated focus on SE Asia and beyond.
- Provide a full range of legal and tax advisory services at an international standard





EDF

CONTACT

Times City – Office Tower n°2 – 16th Floor – Units 6
 Between Hanthawaddy & Kyuntaw Road
 Kamayut Township – Yangon - Myanmar
www.edf.com
www.facebook.com/edf
twitter.com/EDFofficial

PRESENTATION

Electricité de France (EDF) Group is the world's leading electricity company. Headquartered in Paris, EDF operates a diverse portfolio of 120+ gigawatts of generation capacity in Europe, South America, North America, Asia, the Middle East and Africa.

Its business covers all electricity-related activities, from generation to distribution and including energy transmission and trading activities to continuously balance supply with demand.

With activities across the entire electricity value chain, EDF is reinventing the products and services it offers to help residential customers manage their electricity consumption, to support the energy and financial performance of business customers and to support local authorities in finding sustainable solutions for the cities of the future.

Against the backdrop of the energy transition, EDF has defined a strategy called CAP 2030 which underpins the Group's goal of: Being an efficient, responsible electricity company that champions low-carbon growth.

KEY FACTS & FIGURES

- Turnover: 71,203 M. Euros (2016)
- Number of employees: 154,845 worldwide
- Part of turnover outside France: 47%



"Here at Yangoods, we're delighted of the Dynamism of the CCI France. We sent over a dozen staff to the various training proposed, always conveniently scheduled, timed and priced. We appreciate as well the extra exposure they give to companies, and the networking events. Overall they are of a great help and we're looking forward to many more years using their services."

Jean Curci - MD/ Director of Sales & Marketing

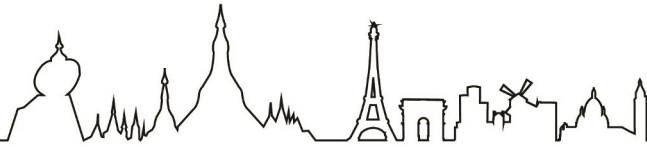


Yangoods

"The FMCCI team has been of valuable assistance throughout our setting up in Myanmar, and this at different levels. Always available to help and full of relevant advice, the FMCCI team has without a doubt accompanied us to ensure our implementation would be done successfully."

Yann BARY - President

Acteus Group



EXO Travel

CONTACT

147 Shwe Gone Taing street - West Shwegondaing Ward - Bahan Township - Yangon -Myanmar
 +95 1 860 493 3~ 40
 myanmar@exotravel.com
 www.exotravel.com
 www.facebook.com/ExoTravelGroup
 www.linkedin.com/company/exotravel ,

PRESENTATION

EXO Travel Myanmar (formerly Exotissimo Travel Myanmar) was established as a joint venture between EXO Travel Group, a French Tourism Company and Daw Su Su Tin, a local women entrepreneur, in 1995. We are coming into the 22 years' service in the Myanmar Tourism industry.

As EXO Travel Group, we have been pioneering unique journeys in Asia for more than two decades. Across each of the 10 countries in which we operate, we have developed in-depth tours that go far beyond the surface to reveal the heart of each destination. Along with our team of local and in-destination travel experts and time-tested logistics, we combine deep knowledge of the region with a progressive vision to make us one of Asia's most trusted and exciting DMCs. We have 9 Sales offices worldwide.

KEY FACTS & FIGURES

- 1,500 agents in 80 countries
- 850 staff from 35 countries in 25 offices
- Travelife Certified for "Excellent Sustainability" in 2016



Flymya

CONTACT

No. 1260 - Innwa 3rd Street - 6 Quarter - South Okkalapa Township - Yangon
 +95 1 850 066 6
 info@flymya.com

PRESENTATION

Flymya is a travel technology company based in Yangon, Myanmar. Founded in 2015 by a serial entrepreneur who builds business on the motto of unleashing local entrepreneurship through technology, Flymya was born to make travel easy and affordable.

We aim to revolutionize and transform the travel industry in Myanmar. Imagine a frictionless booking experience where data, science and people come together to provide a seamless customer experience.





Contact

Parkside One | 271-273 Bagayar Street
Sanchaung Township | Yangon | Myanmar
+95 9761786514
contact@fmidecaux.com
www.fmidecaux.com

FMIDecaux

FMIDecaux

CONTACT

France - 17 rue Soyier - 92200 Neuilly sur Seine
+33 1 307 979 79
info@jcdecaux.fr

Myanmar - Parkside One Building - 271/273 Bagayar Street - Sanchaung Township - Yangon
+95 9 761 786 514
contact@fmidecaux.com
www.fmidecaux.com

PRESENTATION

FMIDecaux Co., is the new joint venture company between First Myanmar Investment Co., Ltd. ("FMI") and JCDecaux Asia(S) Pte Ltd. ("JCDecaux"), the number one outdoor advertising company worldwide. Splitting a stake of 40% (FMI) and 60% (JCDecaux), FMIDecaux won an exclusive 20-year contract with Yangon City Development Committee ("YCDC") for design, fabrication, installation, maintenance and operation of street furniture items and advertisements.

Combining JCDecaux's global expertise in outdoor advertising and street furniture with FMI's decades of experience in the local Myanmar market, our plan is to build 500 bus shelters and 500 City Information Panels (CIPs) across the city of Yangon.

KEY FACTS & FIGURES

- Over 1000 advertising locations
- 20 years exclusive contract
- 1 unique OOH platform





CONTACT

Times City – Office Tower 2 – 16th floor –
Units 1611 & 1612
Between Hantawaddy & Kyuntaw Roads
Kamayut Township – Yangon – Myanmar
+95 9 425450546
www.freyssinet.com

Freyssinet

PRESENTATION

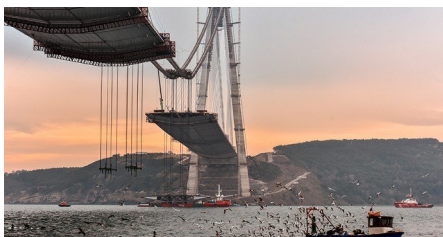
Freyssinet brings together an unparalleled array of civil engineering expertise. Covering the design of structures, the production of materials and equipment and their implementation on site, Freyssinet offers integrated technical solutions on two major fields: construction and structural repair.

For over 75 years, Freyssinet has been involved in numerous projects on five continents, making it the world leader in its specialized areas of prestressing, construction methods, cable-stayed structures, structural accessories and the repair, reinforcement and maintenance of structures.

These activities are performed on a wide range of structures, including civil engineering ones, buildings, skyscrapers, industrial installations, power production plants, offshore platforms, transportation infrastructures, sporting facilities and more.

KEY FACTS & FIGURES

- Turnover: €750 M
- Employees: 7,500
- Locations in over 70 countries around the world



CONTACT

Myanmar

Yangon - 291 Wai Za Yan Tar Road - Thingangyun Township
Mandalay - Mingalar Mandalay Compound - Block 2 - Unit 5 - 73 Street - Chan Mya Tar Zi Township
+95 9 977 894 545
sales@gtmh-telecom.com
www.gtmh-telecom.com

Golden TMH Telecom

PRESENTATION

GTMH, a Myanmar-based company with a NFS-I and IGW Licenses, is a leading communications and network service provider with one of the most complete service offerings in the market, utilizing Fiber, Wireless and Satellite access technologies to provide a unique one-stop-shop solution for their Clients.

Our connectivity offer is combined with a carrier neutral Tier II & Tier III standard compliant Data center.

Being Myanmar Only VMware cloud Verified Partner and Enterprise Cloud Provider, we are proud to demonstrate our commitment to providing the highest level of Service Available in country, backed by VMware Seal of approval.

KEY FACTS & FIGURES

- Complete IT & Telecommunications Service Providers
- Cloud Offering: First commercially launched VMware VCPP partner
- Myanmar first and only platform and infrastructure as a service provider



BLISSFUL
GATHERINGS
MADE GRAND



Special price
for the CCI member
for all Meeting and
Special events organize
at the hotel

DISCOVER THE ART OF BRINGING STYLISH
AND EXTRAORDINARY EVENTS
TO LIFE



Grand Mercure Yangon Golden Empire
No.1, Corner of Myittar & Thakhin Pho Hla Gyi Road, 14 Ward,
South Okkalapa Township, 11091, Yangon, Myanmar
Tel: + 95 1 7330 288 | Email: HA7W5@accor.com
GrandMercureYangonGoldenEmpire
GrandMercureYangonGoldenEmpire
www.GrandMercureYangonGoldenEmpire.com

Hospitality - Tourism



GRAND MERCURE
YANGON GOLDEN EMPIRE

Grand Mercure Yangon Golden Empire

CONTACT

1A Corner Of Myittar Road & Thakhin Phoe
Hlagyi Rd - 14 Ward - South Okkalapa Town-
ship - Yangon-Myanmar
+95 1 233 028 8
ha7w5@accor.com
www.GrandMercureYangonGoldenEmpire.co
m
FB: GrandMercureYangonGoldenEmpire
IG: GrandMercureYangonGoldenEmpire.com

PRESENTATION

Grand Mercure is an upscale network of hotels and apartments combining rich local traditions with renowned French touches to deliver a fresh perspective on world-class service. Grand Mercure is a cultural touchstone in each destination, capturing guests' imagination and bringing local stories to life. Operating in Asia Pacific for almost 20 years, the Grand Mercure brand is uniquely adapted to each market and a network, which consists of 45 hotels worldwide with 39 hotels in Asia Pacific. Grand Mercure is a brand of ACCORHOTELS, the world's leading hotel operator with nearly 4,300 hotels and over 250,000 employees in 100 countries. We invite you to discover and experience our stories throughout your stay.





CONTACT

470 - Thitsar road - South Okkalapa Township - Yangon-Myanmar
 +95 1 572 335
 info@greenvisionmyanmar.com
 www.greenvisionmyanmar.com
 www.linkedin.com/company/3726593/

Green Vision

PRESENTATION

Green Vision is a Property Developer specializing in boutique high-grade residential and multi-purpose real estate, mainly in Yangon and Dawei. In parallel to Property Development activities, Green Vision also provides Construction Management Services and Property Management Services.

100% Myanmar owned, the company works with a portfolio of diverse partners with the objective to draw knowledge, know-how and capacities from various sources, in order to build up local capacities to become a successful and sustainable business group. From day one we have been totally focused on keeping our partners and clients' interests as our primary goal.

KEY FACTS & FIGURES

- Best Boutique Developer Award at Myanmar Property Award 2016
- 7 projects in operations
- 65 employees



CONTACT

Thailand - Italthai Tower - 2034/66 - 14th Floor - Room 14-02 - New Phetchburi Rd - Bangkok - Huaykwang - Bangkok

Myanmar - CCI France Myanmar - Times City – Office Tower 2 – 16th floor – Units 1611 & 1612 - Between Hantawaddy & Kyuntaw Roads, Kamayut Township – Yangon – Myanmar
 +95 9 425 450 546
 www.groupeseb.com

Groupe SEB

PRESENTATION

Distribution of small domestic equipment under TEFAL, KRUPS and SUPOR brands.

Service Products: Cookware (frying pan, wok pan, saucepan, stock pot, pressure cooker) and small domestic electrical appliances (steam iron, blender, juicer, rice cooker, steamer, kettle, toaster, espresso machine, hair dryer, vacuum cleaner, fan, oven).

Subsidiary of Groupe SEB importing, selling, advertising and distributing French small domestic electrical appliances under the brand names: TEFAL, KRUPS, and cookware under the brand name: TEFAL, SUPOR.



Gulliver Travels & Tours

CONTACT

48 B - Inya Yeik Thar Street - Kabaaye Pagoda Road - Mayangone Township - Yangon- Myanmar

+95 1 655642, +95 1 657238

+95 9 732 356 44

herve.flejo@gmail.com

www.gulliver-myanmar.com

www.facebook.com/gulliver.myanmar/

PRESENTATION

Gulliver Travels and Tours can arrange any kind of trips inside the country. Whether you want to do a first discovery of the main touristic places or need to come for shooting some documentaries in special areas, our team is there to assist you the best they can!

Since 2015, Gulliver has opened its own boutique hotel in Nyaung Shwe (Thanakha Inle Hotel) and our team there will be happy to welcome you anytime of the year, to enjoy the comfort of our 26 rooms and relax at our swimming pool!

KEY FACTS & FIGURES

- Founded in 1998
- 25 staff in 5 offices
- 26 rooms at Thanakha Hotel



Havas Riverorchid

CONTACT

Times City – Office Tower n°2 – 17th Floor – Units 7—Between Hanthawaddy & Kyuntaw Road—Kamayut Township – Yangon - Myanmar

+95 1 230 563 6

www.havas.com

PRESENTATION

We started operations in the region in 2000, and since then we've had only one goal – to know and understand Indochina better than anyone else to deliver effective and locally resonant digital, media, creative, research, PR and activation campaigns.

In September 2015, we partnered with leading global communications group Havas, bringing the strength of tools, technologies, and training support.

With the complementary expertise of Havas and our common approach to integrated marketing services, we are here to help your business grow in Myanmar and across Indochina.

KEY FACTS & FIGURES

- Part of Havas Worldwide, founded in 1835, with 20,000 employees in 100+ countries
- Established in 2007 in Myanmar
- 52 local employees, 15 nationalities

DISCOVER
HOTEL G
YANGON

LIFESTYLE HOTEL • DESIGN ROOMS • IN-VOGUE DINING • TRENDY EVENTS



FOLLOW US ON
f @HOTELGYANGON
@HOTELG_YANGON

SCAN THIS QR CODE
FOR ROOM DISCOUNTS
& SPECIAL OFFERS



HOTEL G 5 Alan Pya Pagoda St. **YANGON** Myanmar hotelgyangon.com (95) 1 243 639

Hospitality - Tourism



HOTEL G
YANGON

Hotel G Yangon

CONTACT

5 Alan Pya Pagoda Street - Yangon - Myanmar
+95 1 243 639
rsvn@hotelgyangon.com
www.hotelgyangon.com
www.facebook.com/hotelgyangon/
www.instagram.com/hotelg_yangon/

PRESENTATION

Opened in 2017, Hotel G Yangon is an 85-room vibrant lifestyle hotel, design inspired with a subtle urban accent; it is ideally located at the heart of Yangon's vibrant entertainment neighborhood, with art galleries, shopping malls, the famous Bogyoke market and the central railway station right on its doorstep. Hotel G offers a spacious and fully-equipped fitness center, Real Fitness Express™, a G Shop with branded souvenirs and local items, a communal area where like-minded guests get to gather and shares the ground floor with Babet Eatery & Bar. The restaurant serves a simple French and Mediterranean-inspired cuisine with a selection of local and international beers and affordable qualitative wines.





HQS

CONTACT

19/C Dhamaryon Street - 6 Mile Hlaing Township - Yangon-Myanmar
 +95 1 507 050
 +95 1 526 243
 enquiry@hqsko.com
 www.hqsko.com
 www.facebook.com/hqsko
 www.linkedin.com/company/hqs-co-ltd

PRESENTATION

HQS Co., Ltd. was founded by U Naing Oke in 2013 to provide mobility and relocation services for the advisors from the US department of the Treasury and then World Bank Group Myanmar. As soon as company has been launched, it also entered into the IT industry through IS/IT supports contract awarded by Total E&P Myanmar.

HQS' main activities are the provision of managed IT services and solutions to the SMEs, government and international organizations. We also have had the proven records in System Integrations. One of the biggest projects was Video Conferencing system installation, network system improvement and data center construction project at the Office of Union Supreme Court and its high courts in each States and Divisions. Some of our clients are Total E&P, Posco Daewoo E&P, French International School, European Chamber of Commerce and many other local companies in different industries and NGOs. Since 2017, we have also been entering into the software industry and specialized in the web and mobile application developments.



Hydro Plant

CONTACT

10th Floor - Royal River View Condo - Corner of Merchant 30th street - Yangon - Myanmar
 +95 9 766 050 139
 tech@hydroplantmm.com

PRESENTATION

Hydro Plant's main agri-tech product is a cost-effective solar-powered smart IoT farm control system for food processors, traditional, aquaculture and hydroponic farms. With the control system, farmers can reduce operation costs, increase operational efficiency and gain consistent quality outputs. This has been proven at over 75 deployed farms with 250 more farms in the pipeline.

KEY FACTS & FIGURES

- Founded in 2018
- 15 employees
- Deployed 55 farms with their control system





"I have participated in the events organized by the FMCCI since I joined Audier & Partners two years ago. I also had the opportunity to lead conferences that allowed us to meet other companies, with whom we created strong business relationships. I have always been satisfied with the work undertaken by FMCCI's team."

Eddy Jabnourne - Resident Director
Audier & Partners Yangon Office



"The Digital Marketing training's hands-on approach by an experienced trainer helps to drive engagement among students which is reflected in the positive feedback I have received from our marketing staff. Therefore, I strongly recommend these courses to anyone who is keen on acquiring new knowledge in the fast-evolving segment of digital marketing."

Amy Nyunt - Managing Director
Netsmart



CONTACT

204/8 Nguyen Van Huong - Thao Dien ward
- District 2 - Ho Chi Minh City - Vietnam
info@ias-8.com
[https://www.linkedin.com/company/ias-8-ltd-/](https://www.linkedin.com/company/ias-8-ltd/)

KEY FACTS & FIGURES

-8 fields of missions in 8 Asian countries



IAS-8

PRESENTATION

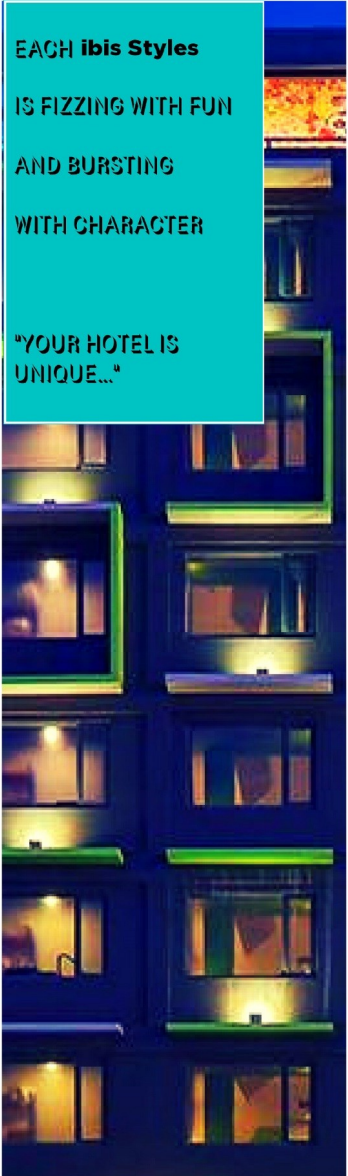
IAS-8 is an independent company established in Asian countries and with operational capacities in Europe and Africa. We have a team of over 60 full-time employees, all of whom are highly-trained and ready to meet your requirements in the fields of management and business intelligence.

We are proud to be a partner of choice for numerous well-known multinationals in the region. Our mission is to accompany you in entering new markets or in consolidating existing operations abroad. Drawing upon our recognized expertise and wealth of experience in all areas of risk mitigation, we are highly adaptable and able to develop bespoke risk management solutions based on your specific requirements. We currently have partners across a diverse range of industries including electronics, pharmaceuticals, consumer and luxury good, petrochemicals, construction and retail. We prefer to take a holistic approach and to work alongside you from the initial identification stage through to the implementation of mitigating actions.



Yangon Stadium

COMFORT, UNIQUE DESIGNS, ALL- INCLUSIVE
DIFFERENT THEMES OF SPORTS EVERYWHERE



EACH **ibis Styles**
IS FIZZING WITH FUN
AND BURSTING
WITH CHARACTER

"YOUR HOTEL IS
UNIQUE..."



ROOMS
FOR A REALLY, REALLY, REALLY
GOOD NIGHT'S SLEEP



AT **ibis Styles Yangon Stadium**,
YOU WILL FINE DIFFERENT
THEMES OF SPORTS
EVERYWHERE....



HOTEL ADDRESS
369 Laydaungkan Road,
Thingangyun Township,
11071, Yangon, Myanmar.

HOW TO REACH THE HOTEL
GPS: N 16°49' 18.18"
E 96°10' 53.68"

CONTACT THE HOTEL
Tel.(+95)1 5781 01
Fax.(+95)1 8560 909

EMAIL
H9926-RE@accor.com

WEB
ibisstyles.com
accorhotels.com



ibis Styles Yangon Stadium

CONTACT

369 Laydaungkan Road - Thingangyun
Township - Yangon-Myanmar
+95 9 456 881 088
+95 1 578 101
www.ibisstyle.com
www.accorhotels.com

PRESENTATION

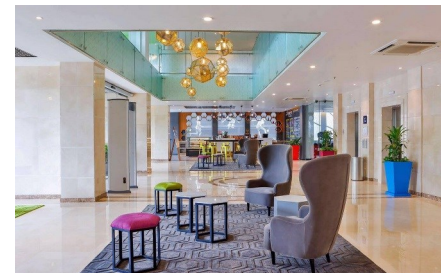
ibis Styles Yangon Stadium is the only International Economy Brand Hotel in Myanmar, offering an unique, cozy & personalized design. Strategically located near to Thuwanna National Stadium, both International Airports and Downtown can be reached in less than 30 minutes.

It offers 108 modernized rooms with the new extra-large ibis bedding, free wi-fi, mini-bar and international buffet breakfast. Our Superior & Suite rooms offer to our guests into wellness large bathrooms with bathtub. LeClub AccorHotels and Accor+ members will feel welcome and enjoy full benefits in our international hotel.

KEY FACTS & FIGURES

- 108 design rooms
- 6 fully equipped meeting spaces
- 3 international outlets

Our 369 Rooftop Restaurant & Bar features one of the best Yangon Skylines and Sunset viewpoints. For hotel guests but also fitness lovers neighbors, our fitness center is high quality equipment and additional executive services such as steam rooms, sauna, lockers and showers.





IKON Group of Companies

CONTACT

328A Pyay Road - Sanchaung Township - Yangon-Myanmar
 +95 1 527 705
 sales@ikonmart.com
 www.ikonmart.com
 www.facebook.com/IKON.Trading

KEY FACTS & FIGURES

- Partnership with renowned manufacturers
- Several branches in Myanmar



PRESENTATION

Ikon Group was formed to meet the needs of the niche hospitality industry and consumers. Having over 23 years of experience, Ikon has fine tuned the product and service mix to provide for a rapidly growing and increasingly sophisticated market demands. Ikon, nowadays is Myanmar's most prominent luxury hospitality one-stop service hub, offering thousands of esteemed products to hundreds of enterprise customers.

Ikon Mart, the Cash and Carry Stores, make your procurement easy and efficient, where people experience the kitchen equipments, in-room linen and articles, F&B equipments and displays in a professional setting.

The professional test kitchen is made available for the customers to research and develop their recipes for through using modern cooking equipments.

Ikon provides turnkey solutions to the new laundry/restaurant/kitchen set ups. Our technical services team has successfully installed and delivered over three hundreds kitchens and over one hundred laundries for our valued customers in Myanmar.



Inno Power

CONTACT

Building 9 - 1st floor - MICT Park - Hlaing Tsp - Yangon - Myanmar
 +95 1 230 537 3
 pa@mibaedu.com
 http://www.myanmariba.com

PRESENTATION

Myanmar International Business Academy will create well-rounded and socially responsible leaders who receive international recognized certificates, understand the global trend, and know how to run international operations successfully.

To offer the full spectrum of international demanding programs which create and disseminate new knowledge through research and education. To contribute to the broader educational and social missions by pushing back the frontier of knowledge in business and by organizing education corporate social responsibility programs. To become one of the leading private institutions in Myanmar. To build up the first research center which will create Myanmar Theories and local cases.





Inspiral Creative

CONTACT

Motherland Condominium - 9th floor -
240/242 - Seikkantha Street - Upper Block -
Kyauktada Township - Yangon-Myanmar
+95 9 731 621 22
sales@inspiralcreative.com
www.inspiralcreative.com/
www.facebook.com/inspiralcreative
www.linkedin.com/company/2885144/

KEY FACTS & FIGURES

- Incorporated in Myanmar, Singapore
- Operating in Myanmar since 2012
- 30+ team members from 8 countries

PRESENTATION

Inspiral Creative was established with a quest to create beautiful websites, graphic designs and digital solutions for local and international organisations. We are committed to pioneering ethical practices, both socially and environmentally.

Our work is visible in print, web and mobile on some of the most prestigious NGO's, UN Agencies and International Corporation's projects; a testament to our dedication for aligning digital solutions to your organisation's values, and continuing our reputation as one of Myanmar's leading design and development agencies.

Inspiral Creative has a carefully cultivated working environment, where employees are constantly challenged to do their best. Our local and international staff and interns are trained in IT best practices; we are proud to really make a mark in an industry of growing importance to Myanmar's future.



INSUREXCELLENCE
INSURANCE BROKERS

InsurExcellence

CONTACT

Aurora Business Tower - 3rd Floor - Room
305 - No. 40 - No. 1 Industrial Road - Bahan
Township - Yangon
+95 1 372 442 Fax: +95 1 510 933
info-myanmar@insurexcellence.com
www.insurexcellence.com/

KEY FACTS & FIGURES

- Portfolio over 30,000 lives for Health insurance
- Market leading broker in Myanmar since 2013
- Our Myanmar team has 100+ years of expertise



PRESENTATION

InsurExcellence is a well-established regional insurance broker, with our head office in Thailand, and clients across Southeast Asia. We handle Group or Corporate insurances for organizations of every profile, and our biggest practice area is Employee Benefits such as Health and Life Insurance for local staff and management, including expatriates. We have been actively engaged in Myanmar since 2013, and are the clear market leaders in handling Group Health plans for local staff. In addition, our expertise and capabilities include Property and Liability insurances for Myanmar risks.

Whether you are a multinational with large staffing, or an SME with only a few staff, we can tailor a solution for any business or organization. Our clients span many sectors and they have come to expect from us professional, impartial advice on their insurance programs, regardless of industry, location and size.

We have a professional team of Myanmar staff on the ground, supported by three dedicated expatriates overseeing our operations in the country.



International Group of Entrepreneur Company Limited (IGE)

CONTACT

27/B - Kaba Aye Pagoda Road - Bahan Township - Yangon - Myanmar
 +95 1 551 953, +95 1 543 443
<http://www.igemyanmar.com/>

KEY FACTS & FIGURES

- over 20 years in Myanmar
- 2,000 employees
- seven business units



PRESENTATION

With a vision to grow the business beyond trading and meet Myanmar's development needs, U Ne Aung independently established International Group of Entrepreneurs (IGE) Co., Ltd. which absorbed all AYP businesses in 1999.

To meet past regulations that limited companies to be involved in up to three business sectors, U Ne Aung established new companies such as Myanmar Rice Trading to expand its business to include trading in forestry and agriculture products for the private sector, as well as fulfilling supply and installation contracts for the public sector.

Over the years, IGE continued to diversify based on the needs of the country and economy as it develops and grows. Today, IGE actively invests and participates in key high-growth sectors such as trading, power, energy, construction & real estate, telecommunication and hospitality.



International SOS

CONTACT

Inya Lake Hotel Compound - 37 Kaba Aye Pagoda Road - Yangon-Myanmar
 +95 1 657 922
 +95 9 420 114 536
reception.ygn@internationalsos.com
www.facebook.com/sosclinyangon/

KEY FACTS & FIGURES

- More than 11,000 employees
- More than 1,000 locations in 90 countries
- The world's leading medical and travel security risk services company



PRESENTATION

The International SOS Group of Companies is in the business of saving lives, protecting your global workforce from health and security threats. Wherever you are, we deliver customised health, security risk management and wellbeing solutions to fuel your growth and productivity. In the event of extreme weather, an epidemic or a security incident, we provide an immediate response providing peace of mind.

Our innovative technology and medical expertise focus on prevention, offering real-time, actionable insights and on-the-ground quality delivery.

The International SOS Yangon Clinic commenced operations in 1995. The clinic offers primary health care services. We have operated in Myanmar for more than 20 years and provide 24/7 general practice and emergency care. We provide care to the expatriates and local community in Yangon and network of partners throughout the country.



Hotel & Serviced Apartments
A Haven of Nature
in the Heart of Yangon



Inya Lake Hotel

CONTACT

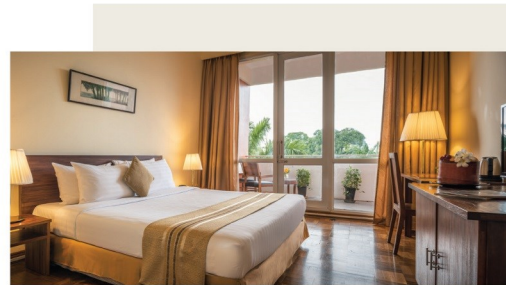
37 Kaba Aye Pagoda Road - Yangon- Myanmar
+95 1 966 285 759
inyalake@inyalakehotel.com
www.inyalakehotel.com

PRESENTATION

Inya Lake Hotel is a colonial-style hotel, surrounded by verdant gardens, a serene lake resplendent with lotus, leafy trees and a free-shaped swimming pool. The hotel offers 185 spacious rooms and suites. All rooms and suites come with private balconies, offering guests wonderful views as well as free Wi-Fi and creature comforts for a perfect stay.

Inya Lake Hotel

The Inya Lake Hotel Yangon is located on the banks of the Inya Lake, 15 minutes by car north of the city center. The colonial style hotel is surrounded by 27 acres of tropical and verdant gardens. Its spacious rooms & service apartments and natural surroundings make it the perfect place to relax and unwind after a hectic day in Yangon.



Inya Lake Hotel

37 Kaba Aye Pagoda Road, Yangon, Myanmar
Tel: +95 1966 2857-59



KEY FACTS & FIGURES

- Ideal for short and long stays
- Country Club unique facilities
- Banquet and meeting facilities



Javelin Services

CONTACT

99 Condo - Level 4 (A/B) - 99 Dhamazedi Road - Kamayut Township - Yangon-Myanmar
 +95 9 450 622 263 - 4
 www.javelinservices.com
 enquiries@javelinservices.com
 www.facebook.com/javelinservices/

PRESENTATION

Javelin launched in Myanmar in 2016 and now has seven branches, including Yangon and Mandalay. Our clients include manufacturing, office, retail and shopping malls, hotels, hospitals and schools. The customer is at the core of who we are and to augment a best in class service delivery, we have a world class in-house entomologist, enabling us to bring the highest levels of diagnosis and treatment to unwanted pest issues. Coupling this with the use of MNC public health chemicals and a customer facing, web-based accounting and reporting system, our aim is to deliver a best in global class service offering.

KEY FACTS & FIGURES

- Seven Branches in Myanmar
- International Public Health Chemicals
- Audit Level Standards (HACCP, AIB)



JDI Engineering

CONTACT

Times City – Office Tower n°2 – 16th Floor – Units 7 - Between Hanthawaddy & Kyuntaw Road - Kamayut Township – Yangon - Myanmar
 +95 9 887668790
 jdieng.mm@gmail.com

PRESENTATION

JDI infra was started in the name of JDI Engineering, as engineering service company which emphasize on designing, consulting and construction services & other business consulting service by cooperating with foreign companies from Korea, USA and China since 2016. JDI infra mainly focuses on services like overall solution for plant and factory, designing & consulting for steel structure and other business activities. JDI infra also supplies steel structure product like transmission & telecommunication tower, sub-station structure and etc. along with the services we provide. Aside from our core business, we also support LED lighting for home, office and factory with lease services. We, JDI infra always try to deliver best quality work to our clients with sincerity.

Our Motto:

Strengthen together, grow together.

KEY FACTS & FIGURES

- Reliable partner with solid background in steel structure designing and fabrication



Representative:
 Mr. Lin Zhe Han (Managing Director)
 TEL: +95 9 887 668 790
 E-mail: linzhehan@gmail.com

Company Profile
 JDI infra Co., Ltd. is an engineering services and consulting company which specialize on designing and consulting for steel structure by cooperating with foreign companies from Korea, USA and China.

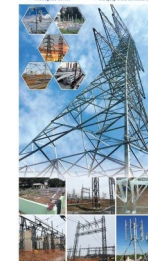
- Services**
- ◆ Tower Site Erection, Installation and Striking
 - ◆ Overall solution for Plant and Factory
 - ◆ Service and Consulting for Telecommunication Steel Structure
 - ◆ Other business consulting

- Products**
- ◆ Transmission Tower
 - ◆ Telecommunication Tower
 - ◆ Lighting Pole
 - ◆ Substation Structure
 - ◆ Roof top Antenna pole
 - ◆ Antenna Bracket



Steel Structure Designing & Fabrication

- ◆ Transmission Tower
- ◆ Telecommunication Tower
- ◆ Substation Structure
- ◆ Roof top Antenna
- ◆ Antenna Bracket
- ◆ Industrial Steel Structure
- ◆ Commercial Steel Structure
- ◆ Building Steel Structure





KiwiGo

CONTACT

No. E2-10 - East Wing - The Secretariat -
Botataung Township - Yangon
+95 9 791 300 308
ken@kiwigo.co
<http://www.kiwigo.com>

PRESENTATION

Myanmar's 1st Travel Social Enterprise, advocating SDG: Sustainable Development Goals in Myanmar (People, Planet & Prosperity).

Established in February 2019, we are now providing "Corporate Travel Solutions" in 11 Branches and 1060 Outlets resellers: Yangon (Head Office), Mandalay, Naypyitaw, Bago, Taunggyi, Hpan-An, Mawlamyine & Monywa.

KiwiGo is more than a travel agency, representing a community of responsible travelers, working & travelling together to practice the UN's Global Goals for Sustainable Development & Green Policy by GreenWill.org.

KiwiGo business model is forged on partnerships with a diverse group of local CSOs & forward-thinking companies that recognize the importance of sustainable travel.

Our message goes viral via social media & our satisfied partners. Marketing budget are given to these CSOs, utilising them to fund their projects.

Key Message: Every single time You Travel with KiwiGo, we donate to charities.



Every single time You Travel with KiwiGo
we donate to Charity.

**Myanmar's 1st Travel Social Enterprise,
advocating SDG: Sustainable Development Goals
in Myanmar (People, Planet & Prosperity)**

+959 961 015 355 | ethan@kiwigo.co | www.kiwigo.co



LE PLANTEUR

RESTAURANTS & LOUNGE

CONTACT

80 University Avenue -Bahan Township -
Yangon - Myanmar
+95 1 514 230
info@leplanter.net
<http://leplanteur.net/>

Le Planteur Inya Lake

PRESENTATION

The beginnings in 1998 were modest, as Le Planteur was hidden at the far end of a narrow and bumpy lane in Yangon. Finding the restaurant was almost like going on a treasure hunt. Today, Le Planteur is located in a heritage house of 1902, at 80 university avenue, by Inya lake in Yangon. The restaurant allies Asian twist of flavors including new accents in modern European & Indochine fine dining. Crossing the gate of Le Planteur, you get the experience of a real time travel. In our garden or in our dining room, Le Planteur offers breathtaking scenery and stylish surroundings. The magic of the place keeps going with savory fragrances from the kitchen. The blends of flavors and the light-ness of the chef Jean Marc Lemery's cuisine, make it one of the finest French restaurants of the country. Le Planteur is also unique for its wine selection. Since 1998, the restaurant hosts the most fabulous wine cellar in Myanmar and probably in all southeast Asia.

Eating at le Planteur is a lifetime happening to remember.



Legrand

CONTACT

Room N304 - Level 2 - Building 15 MICT Park
- Hlaing Township - Yangon-Myanmar
+95 1 230 524 0
Mingalar Mandalay Compound - Block 2 -
Unit 5 - Mandalay-Myanmar
+95 9 969 908 384
www.facebook.com/Legrand.Myanmar
www.linkedin.com/company/legrand-myanmar

PRESENTATION

Legrand is a French industrial group, world leader in products and systems for electrical installations and information networks through seven strategic fields of activity such as: User Interface, Energy Distribution, Building systems, Cable Management, Digital infrastructure, UPS and Installation components In Myanmar, the brand has been sold since the late 90' and is since growing. Strong of two offices/showrooms: Yangon and Mandalay, we are able to follow the fast growth of Myanmar market.

KEY FACTS & FIGURES

- 6 billion euro of sales in 2018
- More than 37 000 employees
- Presence in 80 countries





Lepetitjournal

CONTACT

Times City – Office Tower 2 – 16th floor –
Units 1611 & 1612—between Hantawaddy
& Kyuntaw Roads—Kamayut Township –
Yangon – Myanmar
+95 9 793 101 265
www.lepetitjournal.com
<https://www.facebook.com/lepetitjournalcom-Birmanie-1146632288726673/>

PRESENTATION

Daily FREE e-newspaper, Lepetitjournal.com is independent and published in French. It is the favorite e-media of the French and more widely the French speaking community. Created in 2001 in Mexico lepetitjournal.com is established in 67 editions worldwide throughout the 5 continents and counts more than 350,000 subscribers. Our edition, lepetitjournal.com Birmanie is sent by email from Monday to Friday and it offers daily useful information, local and international news, tips and articles. Its content made of different formats helps in the daily life as it provides valuable information as well as useful addresses, agenda and free classified.

KEY FACTS & FIGURES

- 1st French e-newspaper in Myanmar
- Free e-newspaper with more than 41,000 pages views per month
- More than 1,500 free subscribers



Lesaffre

CONTACT

France - 137 rue Gabriel Péri - 59700 Marcq-en-Baroeul
+33 3 208 161 00
Myanmar - Blessing Trading - 136 - 27th Street - Padeban Township - Yangon
<http://www.lesaffre.com>

PRESENTATION

A global key player in yeasts and fermentation, which started out as a family business in Northern France in 1853, Lesaffre provides innovative solutions for Baking, Food taste & pleasure, Health care and Biotechnology. Lesaffre also strongly believes in maintaining a close relationship with partners and clients. With an established footprint in Asia Pacific, today Lesaffre has 7 production plants and 10 baking technical centers across the region. It has also 10 R&D centers globally to support the business, ensuring that Lesaffre can better respond and anticipate customers' needs.

KEY FACTS & FIGURES

- 1 out of 3 loaves of bread in the world is made with Lesaffre yeast
- Selling in more than 180 markets around the world
- Achieved 2 billion Euros turnover





LFIR
Lycée Français
International de Rangoun
Joseph Kessel
မြန်မာနိုင်ငံတော်ကျောင်း၊ ရန်ကင်း

CONTACT

61 - Inya Myaing Road - Bahan Township - Yangon
secretaire@lfir.org
www.lfir.org
Facebook : Lycée Français International de Rangoun - LFIR - French School of Yangon

LFIR (French International School of Yangon - Joseph Kessel)

PRESENTATION

The French International School of Yangon (LFIR) is a school of excellence, member of the Agency for French Education Abroad (AEFE) network since 2016, which means we are a part of the 496 french schools network abroad, certified by the french Ministry of Education, and one of the 36 schools in Pacific Asia to teach a french ministry-approved curriculum.

Teaching is done in french and English, and is open to students from all over the world, from 2 years-old to 18. The students are given the best training to the main French curriculum exams, such as the Brevet des Collèges and the Baccalauréat, along with English language certifications.

Sports and arts are at the heart of the school's values, thanks to sports clubs and extra-curricular activities created to open the student's mind from the youngest age.

Settled in the Golden Valley neighborhood, in the economic capital city of Myanmar, Yangon, the school now welcome almost 200 students from more than 30 different countries, half of them french. More than 20 teachers are in charge of the students.



Lithan

CONTACT

631/ 5E - Pyay Road - Kamayut Township - Yangon
+95 9 777 868 808, +65 6 324 9730
info@lithan.com
http://www.lithan.com
https://www.facebook.com/lithanmyanmar/
https://www.linkedin.com/company/453411/

PRESENTATION

Our Vision: Bridge global inequality as a peer2peer digital learning and talents platform to deliver growth for talents and enterprises in the digital economy. Our Mission: Connecting talents, enterprises, industry practitioners & technology vendors for an affordable peer2peer learning to deliver digital skills acceleration, talents development, technology and digital best practices implementation. For higher education, we deliver affordable applied learning programs to develop tech talents with industry relevant skills before their graduation. For lifelong learning, we support adult learners in digital skills training and acceleration for high demand future jobs in digital business and technology. For enterprises, we support their digital transformation including digital workforce development and digital solutions implementation.

KEY FACTS AND FIGURES

- >20,000 Learners
- >2,000 companies
- 9 campuses





"We have been members of CCIFM for a year, and we are grateful for the range of services they are offering. Starting from conferences with high quality speakers on business related topics and hot issues in Myanmar; to training on different subjects; to the opportunities of discovering new vendors. The CCIFM is very active and offers a lot of events as well, great opportunities to meet with other chambers and visibility for the company."

Charles Trollet - Finance and Operation Manager

Sanofi



"I would like to endorse and recommend CCI France Myanmar. We have worked together on many occasions for around 2 years and it's always a great pleasure and a fulfilling experience. CCI operate efficiently, professionally and the team are very supportive and helpful which makes organization and execution of our events painless and trouble free. I am very much looking forward to continued collaboration!"

Nick Hearn - Country Manager

The Warehouse Myanmar



CONTACT

Room 9A (Level 9) - Pansodan Business Tower - Corner of Anawrahta and Pansodan Streets - Kyauktada Township - Yangon
+95 9 346 044 794
www.livingstonslegal.com

Livingstons Legal

PRESENTATION

Livingstons Legal is an independent corporate legal, accounting, tax and consulting practice with an exclusive focus on the rapidly developing Myanmar legal landscape. Our team comprises local and international lawyers who have expertise in inbound investment and cross-border transactions and who are deeply familiar with Myanmar's business environment, laws, regulations and practices.

We facilitate business, investment and trade in Myanmar through innovative and cost-effective legal services, with our core areas comprising: Corporate & Commercial; Natural Resources; Corporate Finance & Capital Markets; Projects & Energy; and Telecoms, Media, Technology & IP.





Lotte Hotels & Resorts

CONTACT

82 Sin Phyu Shin Avenue - Pyay Road - 6 ½ Mile - Ward 11 - Hlaing Township - Yangon- Myanmar
 +95 1 935 100 0
www.lottehotel.com/yangon
www.facebook.com/lottehotelyangon/

PRESENTATION

LOTTE HOTEL provides a comprehensive range of spaces to satisfy the various needs of all of our guests including from tourists to business customers. 343 rooms commanding fantastic views of Yangon’s most famous landmarks: Shwedagon Pagoda and Inya Lake. With three fine-dining restaurants and a range of other high quality food outlets, LOTTE HOTEL offers guests an unprecedented choice of outstanding cuisines. With leading chefs and dishes from around the world, each bar and restaurant at LOTTE Hotel Yangon has its own refined, unique atmosphere and setting.

KEY FACTS & FIGURES

- Hotel indoor/outdoor swimming pool, separated hotel, serviced apartment gym
- Hotel Club Floor and 11 function rooms
- Four restaurants at the hotel side



CONTACT

Times City – Office Tower 2 – 16th floor – Units 1611 & 1612 - Between Hantawaddy & Kyuntaw Roads - Kamayut Township – Yangon – Myanmar

PRESENTATION

Luma established in 2012 in South East Asia. We are specialized in the design and management of health insurance solutions. Our specific expertise and in-depth knowledge in the health insurance sector in South East Asia allows us to expand our solutions in the region. With our headquarter in Bangkok and our regional service centers in Yangon, Phnom Penh and Ho Chi Minh City, we are always near our members and ensure the best service. Brighter Health with Luma – Our mission is to ensure our members live healthier, longer lives by providing them brilliantly simple health insurance plans.

KEY FACTS & FIGURES

- Free consultation and support
- No upfront payment at leading medical facilities
- 24/7 worldwide emergency and multilingual support





Our Myanmar office works closely together with the other Luther offices in Asia and Europe. We take a holistic approach, dealing with Asia-wide compliance issues, assisting with the setting up of international holding structures and ensuring proper repatriation of profits.

We provide the complete range of legal and tax advice to clients doing business in and from Asia. To offer a seamless service, we have teams in Europe as well as in Asia, led by partners with many years of experience on both continents. That way, we can immediately answer questions concerning investment decisions and provide our clients with an accurate assessment of the particularities of their projects, no matter where they are located.

Our lawyers unite substantial practical knowledge in important legal areas and cover the entire spectrum of law in Asia and beyond. We support foreign investors in the assessment of location and investment criteria, the structuring of investment projects, acquisitions and joint ventures. Finding and implementing solutions for sensitive areas like technology transfer and know-how protection also form part of our work. Alongside our clients we negotiate with future partners and local authorities and ensure the enforcement of their rights, in and out of court as well as in arbitration proceedings.

The services of our lawyers are complemented by our accountants, HR specialists and tax consultants offering all the services one would necessarily associate with a “one-stop” concept, from outsourced administration to accounting, payroll and tax compliance. Additionally, we provide corporate secretarial services, especially in the Asian “common law” countries.

Collectively, our lawyers, tax consultants and professionals combine the competence and experience necessary to assist comprehensively on all business matters in Asia. Our tax experts advise on individual and corporate tax compliance as well as on withholding tax issues, on Double Taxation Agreements and on complex international tax structures. Our accountants and professionals carry out the time-consuming administrative tasks of the accounting and payroll functions a business must undertake, allowing our clients to concentrate on growing their business.



Luther Law Firm Limited | Luther Corporate Services Limited
 Uniteam Marine Office Building, Level 8, Unit #1 84 Pan Hlaing Street,
 Sanchaung Township, 11111 Yangon, Myanmar, myanmar@luther-lawfirm.com

Legal and Tax Advice | www.luther-lawfirm.com
 Corporate Services | www.luther-services.com

Legal services



Luther.

Luther Law Firm

CONTACT

Uniteam Marine Office Building - Level 8 -
 Unit #1 - 84 Pan Hlaing Street -Sanchaung
 Township - Yangon-Myanmar
 +95 1 500 021 Fax: +95 1 502 852
myanmar@luther-services.com
www.luther-lawfirm.com
www.luther-services.com

PRESENTATION

Luther has been active in Myanmar since 2012. With a team of more than 50 French, German and Myanmar lawyers, corporate secretaries, accountants and tax advisors in our office in Yangon, Luther Law Firm Limited and Luther Corporate Services Ltd. have the competence and expertise necessary to comprehensively assist and advise our clients on all aspects of corporate and commercial law as well as regulatory compliance, including:

- Legal advice
- Tax advice
- Incorporation services
- Corporate secretarial services
- Accounting
- Tax Compliance
- HR administration and payroll
- Cash, fund and payment administration

KEY FACTS & FIGURES

- Set up in 2012
- More than 50 employees
- Assisting clients from all over the world





Mane Myanmar (V. Mane Fils)

CONTACT

520 5th Floor - Unit 5(A) -Kabaraye Pagoda Road - Ko Min Ko Chin Qtr - Bahan Township - Yangon-Myanmar
+95 1 552 943
thibault.verdillon@mane.com
www.mane.com

PRESENTATION

MANE is a French family owned company creating fragrances and flavor for more than 140 years.

We produce cutting-edge flavours, seasoning blends and have a unique expertise for designing sweet to savoury products, combined with an unrivalled knowledge of natural raw materials to bring you the best of nature.

We also produce, for the fragrance industry, a mix of precious natural essential oils and innovative molecules, resulting from a century of know-how and state-of-the-art extraction technologies, observing trends, giving shape to creation and finding answers to consumer needs.

KEY FACTS & FIGURES

- 6th flavour & fragrance company in the world
- 2016 turnover of \$1.2 bn
- 5,000 employees in the world



MEDI MYANMAR GROUP LTD.

Medi Myanmar

CONTACT

46 Pyay Road - 6.5 Mile - Hlaing Township - Yangon - Myanmar
+95 1 526 768
contact@medimyanmar.com
<https://www.facebook.com/MediMyanmarGroupLtd/>

PRESENTATION

Established in 1991, Medi Myanmar Group Ltd. engages in the importation, distribution, and marketing of pharmaceutical formulas, food supplements, skincare, cosmetics, fragrances, and fitness equipment. We are proud to be the exclusive distributor of over 35 international brands in Myanmar.

KEY FACTS & FIGURES

- 10 Offices Across Myanmar (Yangon, Mandalay, Nay Pyi Taw, Taunggyi, Mawlamyaing, Patheingyi, Myeik, Magway, Pyaw, and Myittha)
- Over 750 Employees Nationwide
- Over 35 International Brand Partners





Mega Lifesciences

CONTACT

No. 456 B2/A - Dhammazed road - West Shwe Gone Dine Quarter - Bahan Township - Yangon - Myanmar
 +95 1 860 565 6
www.megawecare.com

PRESENTATION

Mega Lifesciences is one of the leading Pharmaceutical, Consumer Health and FMCG. Marketing and Distribution company in Myanmar for over 25 years. Head quartered in Bangkok, we have presence in 33 countries across the globe.

KEY FACTS & FIGURES

- Started business in 1995 in Myanmar
- 2,100 employees in Myanmar
- 1,400 items/SKUs from 42 companies



Melbourne

CONTACT

A/1 Aung San Stadium (East Wing) - Upper Pansodan Road - Mingalar Taung Nyunt Township - Yangon - Myanmar
 +95 1 251 033
 +95 1 255 795
 +95 1 379 671
bodsec.mcl@gmail.com
www.bnkmm.com
www.facebook.com/BathnKitchen/
www.facebook.com/bekomyanmar/

PRESENTATION

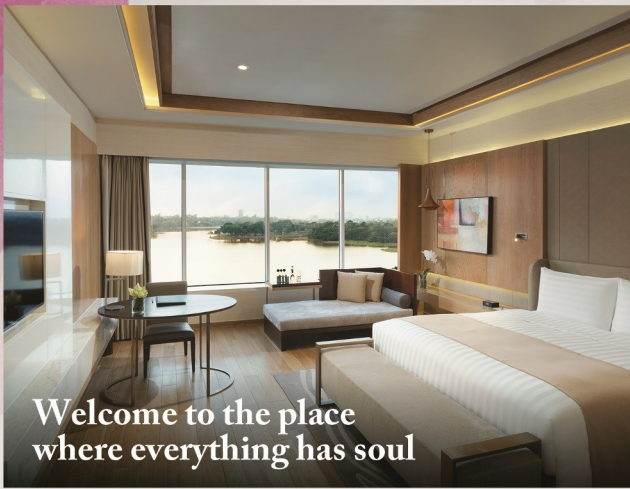
Melbourne Co., Ltd was founded with the aim of becoming the leading bathroom and kitchen solutions provider in Myanmar

The company has more than 25 years of experience in the industry. It started importing sanitary wares in 1991 as Myanmar Pride International Ltd (MPI) in 2014, the company went through management transformations brining in international expertise and changing the name to Melbourne Company Limited (MCL).

KEY FACTS & FIGURES

- More than 25 years of experience in importing products in Myanmar





Welcome to the place
where everything has soul



Overlooking the magnificent scenic spot of the beautiful Inya Lake, Meliá Yangon provides spacious, modern and inviting rooms; all furnished with state-of-the-art amenities. Guests may also indulge in a gastronomical journey at any of our 4 restaurants and bars, showcasing the best of Mediterranean, Vietnamese and International cuisines; or come to Elyx and enjoy our selection of fresh house-baked breads, viennoiseries, cookies, macarons, pastries & cakes.

MELIÁ REWARDS Register for FREE, collect points with each booking and redeem them for free nights, discounts, gifts and much more!

192 Kaba Aye Pagoda Road, Bahan Township, Yangon, Myanmar.
T (+95) 1 934 5000, melia.yangon@melaiyangon.com.mm. Follow us on MeliáYangon

MELIÁ
YANGON
MYANMAR

A member of **MELIÁ** HOTELS INTERNATIONAL

melia.com

Hospitality - Tourism



MELIÁ
YANGON
MYANMAR

Melia Yangon Hotel

CONTACT

192 Kaba Aye Pagoda Road - Bahan Township - Yangon - Myanmar
+95 1 934 500 0
www.facebook.com/MeliaYangon/

PRESENTATION

The Meliá Yangon is a luxury city hotel of Spanish heritage with elegant interior and contemporary design, located opposite the Inya Lake. It is the perfect choice for both business and leisure travelers, with 429 rooms, 3 restaurants, 2 bars, swimming pool, fitness centre and meeting facilities.

Strategically connected to office towers and Myanmar Plaza, it is just 10 minutes by car from the iconic Shwedagon Pagoda and city center, 5 minutes from Kaba Aye Pagoda, and 20 minutes from Yangon International Airport.

KEY FACTS & FIGURES

- More than 370 hotels in more than 40 countries
- Founded in 1956 in Palma de Mallorca
- 7 brands worldwide





MANDALAY

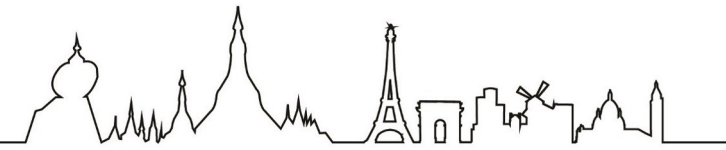


YOUR MANDALAY RETREAT . Set at the foot of Mandalay Hill and facing the Royal Palace, Mercure Mandalay Hill Resort offers exceptional ambience and style including the renown Mandalay Spa & Villas. We invite you to rejoice in the beauty and splendour of Myanmar and experience the special magic and luxury of this unique place.

MERCURE MANDALAY HILL RESORT

No.(9), Kwin (416.B), 10th Street, At the foot of Mandalay Hill, Mandalay, Myanmar.
TEL : (95-2) 4035638 | E-mail : HA3M8-RE@accor.com
Website : <https://all.accor.com/hotel/A3M8/index.en.shtml>

Mercure . Locally inspired hotels.



Mercure Mandalay Hill Resort

CONTACT

No.9 - Kwin (416.B) - 10th Street At the foot of Mandalay Hill - Aungmyaythazan Township - Mandalay - Myanmar
+95 2 403 563 8
HA3M8-RE@accor.com
mercure.accor.com | all.accor.com

PRESENTATION

The 12-acre Mercure Mandalay Hill Resort is set at the foot of Mandalay Hill. It offers panoramic views of pagodas as well as the distinctive architecture of the Royal Palace and its beautiful moat. Mandalay is a 1-hour flight from Yangon and 20-minute flight from Bagan. It is within close proximity to some of the most remarkable archaeological sites in the world.





Every stay at a Mercure Hotel offers you a new experience !

The perfect choice for business travelers, tourist and expatriates. Mercure Yangon Kaba Aye is conveniently located along Kaba Aye Pagoda Road, one of the two main arterial roads leading out of the city centre to Inya Lake and Yangon International Airport.

The seven floor hotel/residence comprises of 183 rooms from deluxe rooms, studios, one to three bedrooms units with fully equipped kitchen, high ceilings and balconies that overlook the pool or city view.



Services & Facilities include:

MiCasa Restaurant & Bar - Gym & Outdoor Swimming Pool with Children Pool - Kids club - Function & Meeting rooms - Laundry Room Service - Daily Housekeeping - 24 hour Security Free Wifi - Ready to Work Space.

No.17, Kaba Aye Pagoda Road, Yankin Township, Yangon, Myanmar.

Tel: 951 -650933 , Fax: 951 -650960

Email: HA3N7-RE1@accor.com www.mercureyangonkabaaye.com



YANGON KABA AYE

CONTACT

17 Kaba Aye Pagoda Road - Yankin Township - Yangon-Myanmar
+95 1 650 933
HA3N7-MK@accor.com
www.mercureyangonkabaaye.com
www.facebook.com/mercurekabayangon

Mercure Yangon Kaba Aye

PRESENTATION

Mercure Yangon Kaba Aye is located along Kaba Aye Pagoda Road just 10 km from Yangon International Airport as well as central business district and key tourist sites and close to a Myanmar Plaza Shopping Mall and Yangon Convention Centre (YCC).

It features 183 spacious rooms and suites ideal for families and long-staying guests. The hotel with deluxe hotel rooms and 1- to 3-bedroom apartments offer views of swimming pool or landscaped gardens. The suites also come with a fully equipped kitchenette and a separate lounge and dining room.

KEY FACTS & FIGURES

- Spacious rooms with balcony and kitchen
- MiCasa Restaurant & Bar
- Ready To Work office space.



The newly remodeled MiCasa Restaurant & Bar offers guests all-day dining options from generous buffet breakfasts to evening cocktails and an à-la-carte selection with delectable local and international flavours. The chic and modern design of the restaurant provides a refreshing space for up to 200 for guests to dine. For meetings, conferences, cocktail parties and weddings, the newly remodeled federation ballroom spaces can accommodate up to 210 guests. The hotel also features a 'Ready to Work' space for business travelers, from 1 to 6 people.



METRO Wholesale Myanmar

CONTACT

Lot No. B/8 - Zone A - Thilawa Special Economic Zone - Thanlyin—Yangon—Myanmar, 11291

<https://metro-wholesale.com.mm>

<https://www.facebook.com/METROWholesaleMyanmar/>

<https://www.linkedin.com/company/metro-wholesale-myanmar/about/>

PRESENTATION

METRO Wholesale Myanmar is the Myanmar subsidiary of METRO Cash & Carry, one of the leading international wholesale and food specialists. METRO's joint-venture established in the country is widely regarded as a timely catalyst in bridging international distribution infrastructure and expertise with local producers of goods and produce.

KEY FACTS & FIGURES

METRO is a leading international specialist in wholesale and food retail. The company operates in 36 countries and employs more than 150,000 people worldwide. In financial year 2016/17, METRO generated sales of around €37.1 billion.



Mirandus Travels & Tours (Travelpro)

CONTACT

Building (12) - Room No (13) - Pyay Road - 8Miles - Mayangone Township -Yangon-Myanmar

+95 9 761 187 158

info@travelpromm.com

www.travelpromm.com

PRESENTATION

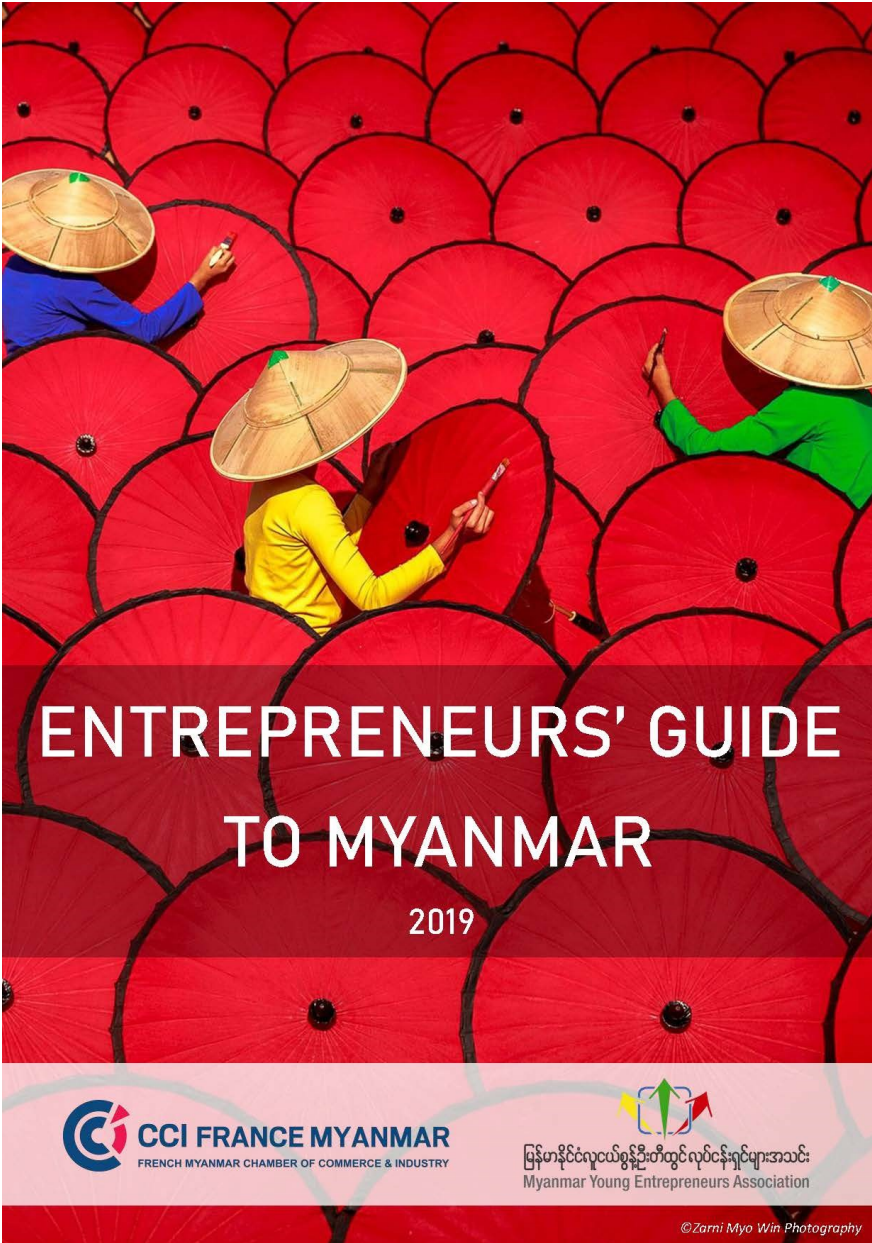
Travelpro online platform for corporations gives you direct online access to rates and availability from over 300,000 hotel properties not only in Myanmar but worldwide. No need to wait for email responses or phone calls to see available options, book and confirm your hotels directly as per your budget in an instant. Our focus is to reduce your travel spend. Our team of experts will work with you to structure travel policies & intelligent travel sourcing plans that drive savings without compromising on the traveller's experience.

KEY FACTS & FIGURES

- Fully licensed travels agency
- Answer all needs for corporate travel
- Accessible via offline and online channels

Travelpro platform enables corporations of all sizes to reduce hotel spends & costs up to 20% annually, empowering your travellers & admin teams to access a cost effective way to book hotels instantly. But that's is not all, Travelpro also provides your finance and administration team the tools not only to book and monitor bookings made, but also access reporting that enables them to make intelligent travel sourcing decisions.





Download our guide for free on
www.ccifrance-myanmar.org



MLR Company Limited

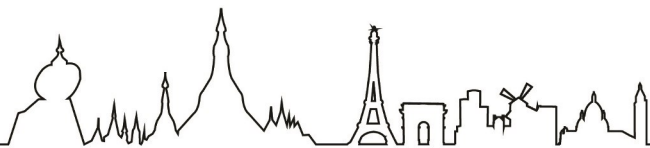
CONTACT

Times City - Office Tower 2 - 16th floor -
Units 11 & 12 Between Hantawaddy &
Kyuntaw Roads, Kamayut Township - Yan-
gon - Myanmar
+959 252178362
contact@mlr.ltd
<http://www.mlr.ltd>
[https://www.facebook.com/MLR-Company-
Limited-547506829022421/?
modal=admin_todo_tour](https://www.facebook.com/MLR-Company-Limited-547506829022421/?modal=admin_todo_tour)
[https://www.linkedin.com/
company/11834709/admin/](https://www.linkedin.com/company/11834709/admin/)

PRESENTATION

MLR Company Limited is a small-size busi-
ness law and advisory firm (ISO 9001:2015)
established in Yangon. The firm has local and
international client base giving us sizable
influence throughout the Republic of the
Union of Myanmar.

We offer a full range of corporate and com-
mercial legal services, including but not lim-
ited a comprehensive legal consulting ser-
vice, incorporation of a Myanmar business,
corporate secretarial Service and Legal re-
search service. We also provide internal
audit for ISO 9001:2015.



CONTACT

Times City – Office Tower 2 – 16th floor –
Units 1611 & 1612
Between Hantawaddy & Kyuntaw Roads
Kamayut Township – Yangon – Myanmar
+95 9 4200 52 332
assistance@feti.aasia

KEY FACTS & FIGURES

- Number of assistance requests handled per year (hospitalisations and evacuations) = 255 cases handled in Myanmar and 782 in total (August 2018 / August 2019)
- Number of clinics, hospitals and house call doctors within our cashless network (ie. patients don't have to advance any fee, we do it for them) = 32 in Myanmar and more than 300 overseas as of August 2019.
- Amount of medical bills paid on behalf of our clients (international insurances & assistance companies) = 150,000 USD in Myanmar and 925,000 USD in Southeast Asia (August 2018 / August 2019)

Myanmar Assistance (Feti'a Assistance)

PRESENTATION

Myanmar Assistance provides medical assistance & emergency evacuation services to local nationals, expatriates and corporate travellers.

Myanmar Assistance offers 24/7 services to connect patients with medical providers in Myanmar and in all of Asia.

Myanmar Assistance is the exclusive representative of AWARE24 in Myanmar, a regional alliance of independent assistance providers in 12 countries of Asia. Each country in our network handles their own operations with local teams on the ground to provide expert medical advice.



CONTACT

Room 410 - 4th floor - Hledan Center - Corner Pyay Road and Hledan Road- Kamayut Township - Yangon-Myanmar
+95 1 230 780 2
nweni.swe@th.bureauveritas.com
www.bureauveritas.com

KEY FACTS & FIGURES

- Testing, Inspection, Certification (TIC) around the whole Myanmar
- 8 business lines: Construction, Industry, Marine, Oil & Gas, In-Service Inspection and Verification, Government Services and International Trade, Laboratory, Consumer Products and Certification



Myanmar Bureau Veritas

PRESENTATION

Myanmar Bureau Veritas set up in Myanmar in 2012 and now operates with our main office in Yangon, around the whole Country. We try to contribute to Myanmar development through some of the main actors in Oil & Gas, Industry, Construction and Certification who have considered us the best option to confirm the good performance and to decrease operational risks on their Projects.

Bureau Veritas is an international recognized certification and verification body established in 1828. We employ over 66,000 people worldwide with a revenue over 4.6 Billion Euros in 2015 and are represented in 140 countries with around 1400 offices, including Australia, New Zealand, Malaysia, Brunei, Myanmar, Thailand, Indonesia, Vietnam and Singapore in the South East Asia Region.

Bureau Veritas is recognised by over 125 Governments to act on their behalf on statutory and regulatory matters related to safety, the management of risks and the protection of the environment and investments. The independence of Bureau Veritas is fully assured by our corporate and financial structure.

BREWING FOR A BETTER TODAY

Carlsberg Myanmar



& TOMORROW

FMCG



Myanmar Carlsberg Company Limited

CONTACT

No. 332 A - Pyay Lane Thwe - North Myayni-
gone - San Chaung Tsp - Yangon - Myanmar
+95 1 230 446 6
myanmar.communications@carlsberg.asia
www.carlsbergmyanmar.com
[https://www.facebook.com/
MyanmarCarlsbergMM/](https://www.facebook.com/MyanmarCarlsbergMM/)

KEY FACTS & FIGURES

- JVA: MGS 49%, Carlsberg 51%
- 2015: Officially inaugurated its Brewery in Bago
- 3 brands: CARLSBERG, TUBORG, YOMA
- >500 employees



"We've been sending our team to different trainings organized by CCI France Myanmar for a few times now. Not only we have good feedback from our team but we also see significant improvements as a result of these trainings. What I appreciate most is that all the lecturers are well experienced and able to encourage the team to place theories into actual business practices. Would definitely recommend to anyone!"

Zarchi Damloup - Managing Director

Akhuka Productions



"Razel-Bec has been part of the CCI France Myanmar since we got our first project in the country back in 2015. At that time, it really made our landing in the Country a much easier one, as it provided us with many useful connections and insightful information about the construction industry. Today CCI French Myanmar keeps on adding value to our business development activity, through the many interesting networking events organized, the capacity building trainings and the business intelligence provided through informative sessions"

Vadim Nunez Pawlowsky - Company representative South East Asia

Razel-Bec

MODULAR

CONTACT

78/79 - Padonma road - North Okala Township - Yangon-Myanmar
 +95 9 361 314 65
 info@modular-solutions.asia
<https://www.facebook.com/modular.myanmar/>

Myanmar Home Design

PRESENTATION

We are focused in building or renting high-quality prefabricated buildings. Our Modular® solution range is fast to manage, movable and strongly quality oriented. Our local manufacturing process allows us to provide facilities at least 3 time faster compared to standard construction means.

Our wide range of applications includes site and remote site facilities, homes, hotels, bungalows, offices, exhibition spaces, takeaway shop, schools, restrooms, data centres – the use cases and designs are endless.

In operation since 2012, we have successfully manufactured and delivered over 7000 m2 across the country with a wide range of applications.

At only a fraction of the price higher than imported products, our solution is in a totally different league, with unmatched customizability, and durability.

We are very proud to propose a truly environment friendly product to our clients. Our process and construction materials are based on green building principles: Reuse, recycle and reduce.





Switzerland Multinational Escalator & Elevator Company in Myanmar

Schindler
Your First Choice



Hotels



Residential Buildings



Office Buildings



Shopping Centers



Factories



Ships



Hospitals



Airports

Mobility Leader in Myanmar Leadership Through Customer Service

- 24/7 Service Call Centre
- A Truly Service-Oriented Company
- Comprehensive Stock of Genuine Spare Parts
- Dedicated Elevator & Escalator Training Center



Contact us

Myanmar Jardine Schindler Ltd

Head Office No. 1/4 Parami Road, Hlaing Township, Yangon, Myanmar.
Tel : 01 654854, 01 654855

Mandalay Office Block No. 18, Mingalar Mandalay Housing Complex,
Between Thazin Street & Ngue Shwe War Street, 73rd Street, Mandalay.
Tel : 02 2000180

Nay Pyi Taw Office No. 494, Ngu War Street, Tha Pyay Gone Ward, Zabuthiri Township,
Nay Pyi Taw, Tel : 09 448548676

Taunggyi Office No. Nya/20 (Na Ma- 15), Gon Htoo Street, U Gyi Khan Ward, Taunggyi.
Tel : 09 402742078

Website www.jardineschindler.com

Email mjsl@mm.schindler.com



Technology for Clean Mobility



Construction



Schindler

Myanmar Jardine Schindler

CONTACT

No. ¼ - Parami Road - Hlaing Township - Yangon-Myanmar
+95 1 654 855 /56
mjsl.mm@schindler.com
www.jardineschindler.com
www.facebook.comMyanmarJardineSchindlerLtd/
www.linkedin.com/company/6191/

PRESENTATION

Schindler was first established in Switzerland in 1874. Schindler Group is one of the world's leading providers of elevators, escalators and moving walks. Every day, Schindler solutions transport one billion people worldwide, rapidly, efficiently and in accordance with their diverse needs. It is Europe's largest manufacturer of lifts and escalators, with a major presence in all the continents.

Schindler operates in more than 140 countries and have more than 1,200 branches. Today, there are more than half a million Schindler lifts and escalators in service in 100 countries around the world.

KEY FACTS & FIGURES

- Established in 1997 in Myanmar
- More than 58,000 employees worldwide, with 350 employees in Myanmar
- Serving 2000 units of elevators and escalators in Myanmar
- 4 branches: Mandalay, Naypyidaw, Taunggyi and Mawlamyaing

As a pioneer in the elevator and escalator industry in Myanmar and the only market player to operate directly without the use of agents and distributors, Myanmar Jardine Schindler have already provided services to a number of key customers with more than a decade of experience.

Our mission is to create new systems and solutions to make the world's buildings and cities safer, more efficient, more sustainable, more comfortable every day, and to be Your First Choice.





The Largest HR Network in Myanmar

CONTACT

1st Floor - Building E - Diamond Condo - No. 497 - Pyay Road - Kamaryut Township - Yangon - Myanmar
 +95 9 313 498 34
 client@myjobs.com.mm
<https://www.myjobs.com.mm/>
<https://www.facebook.com/MyJobsMyanmar/>
<https://www.linkedin.com/company/MyJobsMyanmar>

KEY FACTS & FIGURES

- More than 2 million followers on Facebook
- Hundreds of thousands of candidates using the website to find a new job



MyJobs Myanmar

PRESENTATION

MyJobs is the pioneer of recruitment services in Myanmar since 2012.

MyJobs offers Online Recruitment, Recruitment Agency, Blue Collar Recruitment, Career & HR events, Job Fairs, Employer Branding, Staffing and Candidate and Employee Assessment services for positions and vacancies in Myanmar. MyJobs.com.mm is also the best place to find a job in Myanmar.

Since September 2018, MyJobs.com.mm is part of Ringier AG, a diversified media company and a Swiss family-owned business with head office in Zurich, founded in 1833, with about 6,900 employees across 18 countries. In cooperation with its local partner, Information Matrix Co.,Ltd, IM Ringier is operating Duwun.com.mm in Myanmar.

Large, small, international and local companies work together with our people who are committed to providing exceptional solutions for a variety of recruitment challenges. Hundreds of companies and NGOs have found some of their finest employees through the MyJobs team, comprising of 70+ Myanmar nationals and sector experts from abroad.



We Find The Best Local Talent

CONTACT

Times City – Office Tower 2 – 15th floor – Units 8 /9 /10 / 11
 Between Hantawaddy & Kyuntaw Roads
 Kamayut Township – Yangon – Myanmar
 +95 9 450 214 921
 sales@myworld.com.mm

KEY FACTS & FIGURES

- Largest staffing agency in Myanmar with 70 staff
- Leading supplier of Recruitment, Payroll and Outsourced Staffing in Myanmar
- Ranked No. 1 in Myanmar
- Full range of areas of expertise



MyWorld Careers

PRESENTATION

MyWorld is Myanmar's largest staffing agency with over 70 staff offering Recruitment, Payroll and Outsourced Staffing Services. Established in 2015, we are a fully licensed staffing offering services to both international and local clients. Ranked No. 1 in the market, we are well known for our high levels of customer service, quality of candidates and extensive knowledge of the Myanmar market. We work with over 500 companies in Myanmar mainly focused on Yangon and Mandalay covering the recruitment of professionals in the following disciplines; Accounting & Finance, Engineering, Financial Services, Hospitality, Human Resources, Information Technology, Sales & Marketing, Supply Chain & Procurement.

We have been the recipient of multiple awards from the 2017, 2018 and 2019 Myanmar Employer Awards and participate in CSR activities for the education of youths in rural areas.



CONTACT

Times City – Office Tower 2 – 15th floor – Units 1/2/3 - Between Hantawaddy & Kyuntaw Roads - Kamayut Township – Yangon – Myanmar
<http://www.nexlabs.co>
<http://www.facebook.com/nexmm>

Nexlabs

PRESENTATION

Our Story

nexlabs was founded in 2013 when only less than 1% of Myanmar had access to the Internet. Our founders envisioned the future Myanmar where digital technology is a part of everyone’s life. Since then, nexlabs grew to a leading company with over 80 in-house experts.

Our People

We are a unique mix of technologists, marketers, engineers, craftsmen and analysts delivering world-class solutions, fueled by local insights. By having both left and right brains, our team strives to deliver work that has a real impact on your business.

Our Work

Our output is driven by our passion to deliver tangible business results through combining design thinking, agile methodologies, and customer centricity. We bring together ideas and capabilities needed to execute them to help businesses grow and thrive.



NTS Ltd
NORDIC TELE SERVICES Ltd

CONTACT

No. 19 - 7th Floor - Windsor Estate - Shinsawpu Road - Sanchaung Township - Yangon - Myanmar
 +95 9 972 741 009
 +95 9 768 938 961
<https://www.nordictelco.com>
<https://www.facebook.com/nordictelco/>
<https://www.linkedin.com/company/nordicteleservices/about/>

Nordic Tele Services

PRESENTATION

Nordic Tele Services Ltd, Myanmar (NTS) aims to be the network infrastructure servicing contractor of choice. NTS is providing energy efficient product solutions to the Telecom operators so they can lower cost of operation while reducing their carbon footprint. With our dedicated team of skilled people, we strive to offer the highest quality of service. The Telecom market has evolved from Capex intensive investment to upgrading and retrofitting the existing infrastructure. We focus on Opex management. NTS demonstrates its corporate social responsibility by training local staff in project management and by implementing international standards to ensure a healthy working environment for all employees.

KEY FACTS & FIGURES

- Technical consultants, site management, and maintenance services
- 46 numbers of management, engineers and service personnel
- Almana Energy Pte Ltd (AEL), from Singaporean, invested into NTS in 2016



Unique Competence - Unique Solution

NOVOTEL

HOTELS & RESORTS

INLE LAKE
MYAT MIN

NOVOTEL INLE LAKE MYAT MIN IS LOCATED ON THE EASTERN BANK OF THE PEACEFUL AND BEAUTIFUL INLE LAKE IN MYANMAR. NOVOTEL INLE LAKE IS THE PERFECT PLACE TO STAY DURING YOUR VISIT TO THIS BEAUTIFUL REGION. THE RESORT OFFERS 62 JUNIOR SUITES, 57 VILLAS OVER THE LAKE AND 2 PRESIDENTIAL VILLAS, 2 RESTAURANTS, A SPA, SWIMMING POOL AND MEETING FACILITIES.

MINE THAUK VILLAGE,
NYAUNG SHWE TOWNSHIP,
SOUTHERN SHAN STATE,
MYANMAR.

Hospitality - Tourism



NOVOTEL
HOTELS & RESORTS
INLE LAKE
MYAT MIN

Novotel Inle Lake Myat Min

CONTACT

Mine Thauk Village - Nyaung Shwe Township
- Southern Shan State

+95 9 251 041 570-6

info@novotelinle.com

PRESENTATION

French international hotel chain Accor opened its first Novotel hotel in Myanmar since announcing its return to the country in 2013. Novotel Inle Lake Myat Min hotel grand opening was 6th Oct, 2014. A modern resort with a great architecture, using a lot of local materials, from the pavilion style lobby and restaurant, to the modern lacquer ware and paintings. Situated on the East bank of Inle Lake near Maing Thauk Village. It is 7 miles South of Nyaung Shwe, the main town of Inle Lake, Southern Shan State.

KEY FACTS & FIGURES

- More than 400 hotels & resorts in 61 countries

Treat yourself to tranquility at Novotel Inle Lake Myat Min hotel. Choose from an airy suite looking onto the resort's lush gardens, or a spacious villa right on the water. The infinity pool invites you to soak up the views, and the sunset on the lake provides an unforgettable backdrop to your holidays or meetings at Novotel. The resort offers 40 Junior Suites, 22 Deluxe Suites Lake View, 49 Superior

Villas, 8 Deluxe Villas Lake View and 2 Presidential Villas, 2 Restaurants, In Balance Spa and Gym, Swimming Pool and Meeting Facilities.



ASIA & AUSTRALASIA AWARDS 2017
WINNER



Stylish & spacious rooms with modern accessories



Novotel Yangon Max



CONTACT

459 Pyay Road - Kamayut Township -
Yangon -Myanmar
+95 1 230 585 8
H9045-RE@accor.com
www.novotelyangonmax.com
www.facebook.com/NovotelYangonMax
twitter.com/Novotelyangon

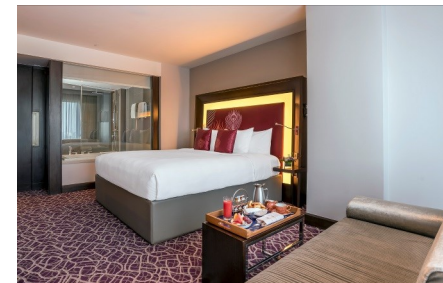
PRESENTATION

Novotel Yangon Max is located mid-way between Yangon International Airport and historical downtown. The hotel is close to Shwedagon Pagoda and numerous embassies. Yangon University Campus is located right across the street offering a wide green area for your morning jog. The 366 contemporary rooms offer a large flowing space in which to stay. Guests staying on executive floors will enjoy additional amenities and access to the Premier Lounge. From breakfast and lunch to dinner and delicious snacks, Novotel Yangon Max provides a wide choice of A La carte and buffet options. Guests can choose from three restaurants and four bars. To relax and rejuvenate, there is a state of art fitness center, a spa, yoga room, swimming pool and rooftop tennis court. The main ballroom with its 12-meter high ceiling hosts up to 700 guests banquet style. The second ballroom welcomes up to 300 guests, 1 conference room and 6 meetings rooms are available as breakout spaces or for group meetings and events.

Entertain your palate



Meet with success at Novotel



KEY FACTS & FIGURES

- Ideal for Corporate stays , corporate meetings, MICE accommodation and events



Okkar Thiri

CONTACT

28 - Pyay Road - Hlaing Township - Yangon-Myanmar
+95 9 443 250 845
+95 1 500 049/ 538 023/ 512 515
aftersales@okkarthiri.com
sales@okkarthiri.com
www.okkarthiri.com

KEY FACTS & FIGURES

- Selling, Installation & Servicing of Medical and Laboratory Equipment

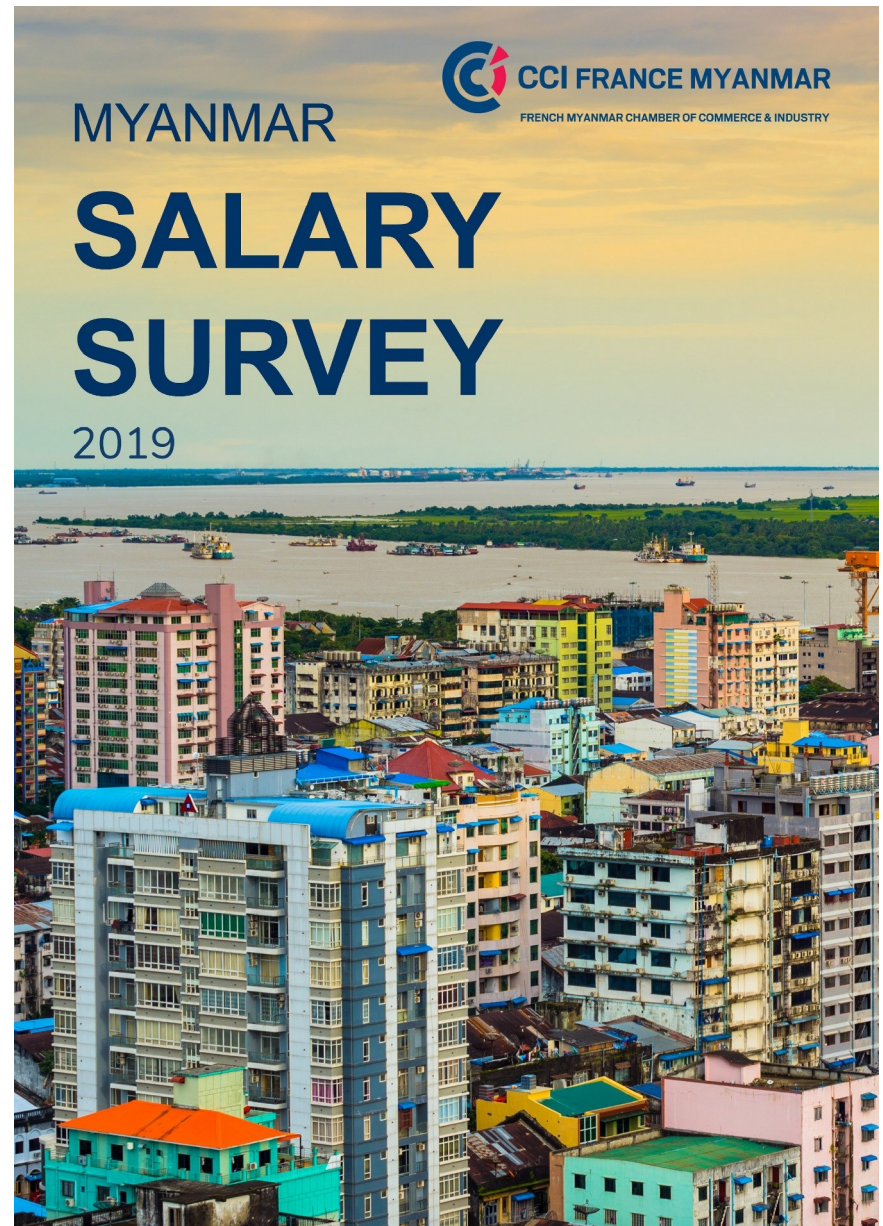


PRESENTATION

Since 1998, Okkar Thiri is the exclusive distributor in Myanmar for leading international medical and laboratory equipment manufacturers. A team of 150 internationally trained specialists provide continuous market intelligence to hospitals, clinics, laboratories and research institutes who requires equipment according to their individual needs. Our distribution is effectively carried out from three offices in Yangon, Nay Pyi Taw and Mandalay.

Our company is dedicated to the principles of quality and service to ensure that equipment supplied is efficient and lasting. We offer to the health sector medical and laboratory solutions with reliable brands and service excellence. Our service team of 30 biomedical engineers remains within reasonable distance to provide immediate intervention as and when necessary.

Our product range covers the following divisions: Medical Equipment, Medical Laboratory Equipment, Research Laboratory Equipment.



Download our Salary Survey for free on
www.ccifrance-myanmar.org



Empowering Artisans and Proudly Celebrate Cultural Heritage

Bay Dar is Panellist Business Services's subsidiary and working together with weaving and handicrafts experts across Myanmar and creating a perpetual effect on the lives of talented artisans by providing them with further trainings, as well as to maximize their socio economic benefits.

Crafts made by talented artisans are deserved to be seen on a global level. Here at Bay Dar, you will get most sophisticated and unique products like no other.

Visit us at -

Baydar & Co Ltd

No.104, 38th Street (Lower Block), Kyauktada Township, Yangon, Myanmar

WWW.BAYDAR.CO BAYDARCO BAYDAR_CO +95 9 777 001185



HR Consultation



CONTACT

No.104 - 38th Street (Lower Block) - Next to MNA Office - Kyauktada Township - Yangon - Myanmar

+95 9 401 088 221 ,+95 9 401 088 220

info@panellistmm.com

services@panellistmm.com

info@tenacitymm.com

<https://panellistmm.com>/<https://www.facebook.com/panellistmm>

<https://www.linkedin.com/company/panellist-business-services/>

Panellist Business Services

PRESENTATION

We specialize in HR solutions & Training services for companies who aims to build a strong & efficient work force for achieving company goals & vision.

With the use of modern and efficient technique our qualified HR professionals & certified trainers deliver the solutions which has great impact in the organizational working environment.

So if you have a vision to establish or transform your company workforce or environment to an efficient work place, we assure you we can provide effective, efficient & affordable solutions to all your HR needs & requirements.

Our services include - Outsource HR Solutions, Employability Skills Development Programme and Strategic HR Consulting.

Your Best Strategic HR Solutions Partner

HUMAN RESOURCES ISN'T A THING WE DO. IT'S THE THING THAT RUNS OUR BUSINESSES.

CONTACT US
+95 401 08 8221
info@panellistmm.com

No.104, 38th Street (Lower Block),
Kyauktada Township, Yangon,
Myanmar
www.panellistmm.com



PEGAZ SOLUTIONS

INTEGRATED FACILITY MANAGEMENT & INDUSTRIAL CATERING

PEGAZ SOLUTIONS is an Integrated Facility Management company, providing services to schools, hospitals, mining operations, and camps for onshore oil & gas projects.

Our expertise ranges from office and industrial catering, housekeeping to turn key services for operators. We support your projects from facility design and construction to maintenance and management.



CATERING



CLEANING SERVICES



LOGISTIC & PROCUREMENT



FACILITY DESIGN, CONSTRUCTION, SUPERVISION & MAINTENANCE



PEST CONTROL & WASTE MANAGEMENT

Contact Us



+95 9 967749175
+95 9 250018200
+95 9 250537979



Gabriel@pegaz-solutions.com
Amine@pegaz-solutions.com
Raouf@pegaz-solutions.com

MYANMAR

271 273 Bar Ga Yar Street. Sanchaung
Parkside 1 building. Mezzanine floor

SINGAPORE

883 North Bridge Road Southbank
#13-01 Singapore 198785

www.pegaz-solutions.com

Facility Management -
Industrial Catering



PEGAZ SOLUTIONS CO. LTD

CONTACT

Parkside One building - Mezzanine -
271/273 Bagayar Street - Sanchaung Town-
ship - Yangon - Myanmar

Pegaz Solutions

PRESENTATION

PEGAZ SOLUTIONS' team operates in Myanmar F&B sector for the past 6 years, and since 2017 provides integrated facility management services for life camps for Oil & gas, mining companies or servicing companies. The team has developed a solid expertise in operating in remote areas by establishing an optimal supply chain to the clients' sites.

PEGAS SOLUTIONS also provides catering services to industrial or commercial companies. Our experienced team can design, install and operate your fully operational canteen. If you opt for meals delivery, our chefs have developed a wide range of recipes at our central kitchen in Yangon ready to be delivered to your office or operations site anywhere in Myanmar.



Never *have* SUVs Gone So Far

THE ALL-NEW PEUGEOT SUV RANGE

TECNOLOGY PULSING WITH LIFE



5008 3008

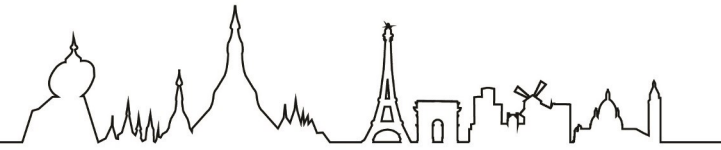
PEUGEOT MYANMAR



Address : No.16, Kabaraye pagoda road, Mayangone Township, Yangon.

Contact No : 09 969 707777

Automobile



PEUGEOT

CONTACT

No.16 - Kabaraye Pagoda Road - Mayangone Township - Yangon - Myanmar
+95 9 969 707 777
<https://supersevenstars.com/peugeot/>

KEY FACTS & FIGURES

- A subsidiary of the SSS Automotive Group
- The first official new car brand showroom in Myanmar in 2013
- Has provided its customers with more than 6,300 new vehicles in Myanmar market



Peugeot Myanmar

PRESENTATION

Peugeot Myanmar, is located at Eight Mile, Kabar Aye Pagoda Road, Mayangone Township. The state-of-the-art facility features a 6-car showroom and a 10-bay workshop for vehicle servicing and general repair. The new showroom provides Myanmar customers with the opportunity to experience the famous French brand and discover the outstanding quality of Peugeot's award-winning SUV's including the 3008 and the 5008.

Myanmar's Peugeot owners will also benefit from the expert after sales support of the Super Seven Stars technical team. Around 50 specially trained Peugeot after sales staff and technicians will provide preventive maintenance and general repair in one of Yangon's most advanced vehicle workshops. The new Peugeot dealership demonstrates Super Seven Stars commitment to contribute to the development of the Myanmar automotive industry and to provide the people of Myanmar with an increasing choice of desirable car brands.

KEY FACTS & FIGURES

- Opened October 2019
- Urban resort hotel for business and leisure
- 650 square meter ballroom (divisible to 3)



Phandeeyar

CONTACT

628/636 - Merchant Road (10th Floor - Royal River View Condo) - Between 29th and 30th St - Yangon - Myanmar

PRESENTATION

Technology is having a massive impact on how business is done, and how people communicate, create, transact and collaborate. Phandeeyar, Myanmar's leading tech hub, is launching a new innovation consulting unit that will transform the country's leading businesses digitally, help them embrace a fully tech-enabled future, and bring international best practices from the global tech industry to Myanmar's C-suites.

KEY FACTS & FIGURES

- Launched the first incubator in Myanmar
- Hosted 1000+ events, meetups and workshop
- Has provided services to more than 50 international partners



Poe-ma insurances

CONTACT

No 321 - 10th Floor - 10A - Corner of 3rd street and Anawyahtar Road - Lanmadaw Township - Yangon - Myanmar
 myanmar@poe-ma.com
 www.poe-ma.com

PRESENTATION

Poe-ma insurances is a French insurance broker, part of Poe-ma Group. First established in 1991 in French Polynesia, the company later expanded in Asia-Pacific, with offices in New-Caledonia, Wallis-et-Futuna, La Reunion, Vanuatu, France, Thailand, Laos and Cambodia.

For the past 28 years, Poe-ma insurances has developed a sharp expertise of remote territories and newly developed countries with their specific economic activities and challenges. If the company is now an international group, Poe-ma insurances manages to keep its local broker identity by providing tailor-made technical solutions to its clients.

First insurance broker to be established in Myanmar in November 2012, our local presence ensures our client availability, reactivity and true understanding. Through its representative office in Yangon, Poe-ma insurances can help both local and international clients to find legal insurance and reinsurance solutions on the global market.



PULLMAN MANDALAY MINGALAR

Whether you are travelling on business, leisure or both, the new Pullman Mandalay Mingalar hotel is ideally located in the new Mingalar Mandalay precinct

- Set to open in 2018 -

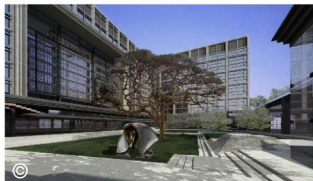
THE PLACE TO MEET

In the heart of Mandalay's new commercial, shopping, residential and entertainment hub stands a unique luxury hotel - the cosmopolitan and stylish Pullman Mandalay Mingalar - the first new built luxury hotel of the century in Mandalay. Ideally situated, it is just moments from the new Mandalay Convention Centre. Access to the city's must-see sights are on your doorstep.

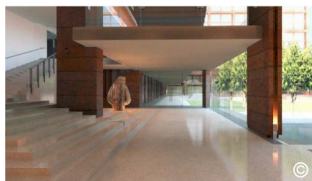
INSPIRED DESIGN

Stephen O'DELL, NYC Registered, Thailand based architect and interior designer, was inspired by the Royal history, Golden Palace and grid layout of Mandalay to create a warm and welcoming atmosphere. A haven of peace away from the hustle and bustle of the busy central / upper Myanmar city.

THE BEST OF THE HOTEL



Landscaping and sculpture works by OKASHIMO Pte Ltd (Singapore), Dr. Colin K OKASHIMO



Elegant modern lines designed by Stephen O'DELL, SODA (Thailand)



Restaurants & Bars destination in Mandalay



Pullman Mandalay Mingalar

CONTACT

Mingalar Mandalay - 73rd Street between Tha Zin & Ngu Shwe Wah Streets - Chan Mya Thar Zi Township - Mandalay-Myanmar
info@pullman-mandalay.com
www.pullmanhotels.com

PRESENTATION

The newly opened Pullman Mandalay Mingalar brings new levels of international hospitality to Mandalay for business and leisure travellers.

It offers 358 Rooms and Suites, Restaurants and Bars, outdoor Swimming Pool and Bar, PULLMAN fit and spa as well as Wi-Fi throughout.

Extensive meetings and events space include 650 square meter ballroom and a selection of smaller rooms and innovative outdoor event spaces. The new Mandalay Convention Centre is just 900m away.

Direct international flights from; Bangkok, Chiang Mai, Singapore (seasonal), Kunming, Guangzhou, Shenzhen, Hangzhou and many more.

Our World is Your Playground

KEY FACTS & FIGURES

- Opened October 2019
- Urban resort hotel for business and leisure
- 650 square meter ballroom (divisible to 3)





Pullman Yangon Centrepoint

Located downtown Yangon with panoramic views of the city in the heart of historical Colonial quarter, offering unique dining and entertainment experiences. The Grand Ballroom and Co-meeting Rooms for your Conferences and Events.

No.65, Corner of Sule Pagoda Road and Merchant Street, Kyauktada Township, 11182 Yangon, Myanmar. T.+95 (0) 1 382 687



OUR WORLD IS YOUR PLAYGROUND



Pullman Yangon Centerpoint

CONTACT

No. 65 - Corner of Sule Pagoda Road and Merchant Street - Kyauktada Township - Yangon-Myanmar
hb0m3@accor.com
www.pullmanhotels.com

PRESENTATION

Pullman is the high-end international brand of the Accor group, mainly targeted at cosmopolitan travelers, who have wide connections and enjoy combining work and pleasure.

Located in the beautiful Yangon Colonial Quarter and Central Business District, overlooking Mahabandoola Park, Sule Pagoda, offering wide views over Yangon River, with its 22 stories, the Pullman Yangon Centrepoint offers 290 contemporary fully connected rooms for global nomads, signature bedding, IPTV, separate shower and bathtub, work desk with connectivity panel, free WIFI.

Enjoy a range of cuisines and signature beverages in "The Merchant" All Day Dining, "The Junction" Lobby Lounge, "Gustave" Bar, "E' Cucina" Italian restaurant, "@The Deck" outdoor pool bar, Meeting Rooms with natural light and Park view, fully equipped Grand Ballroom for 400 guests, Fitness Lounge with Technogym equipment and a unique designed Spa for a cocoon retreat offering an indulgent collection of French relaxing body spa treatments.





Razel MYANMAR: As part of our international strategy, we have identified the huge potential of Southeast Asian markets and established a fully owned subsidiary in Myanmar, where we were awarded with a first contract in 2014. Our objectives is to expand our activities and increase our presence by working together with local players for the sake of mutual benefit, while delivering the infrastructure that the country needs to achieve further development.

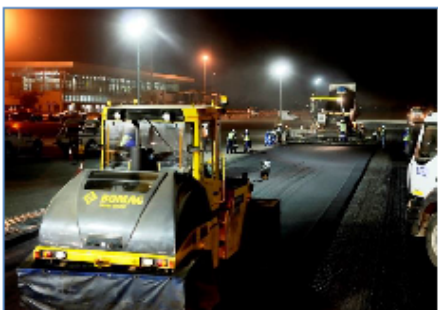
As a large civil works Contractor, we are interested in pursuing mid to large-scale, technically complex projects where Razel-Bec's expertise can add a net value. Waste and Drinking Water plants, water networks, roads and bridges, tunnels and airports as well as Dams are our main targets for Myanmar, where the potential is outstanding.

OUR ETHICAL STANDARDS: Our reputation and our expertise are precious assets which RAZEL-BEC has no intention whatsoever of compromising. Therefore, in addition to these fundamental values, RAZEL-BEC carefully ensures that, both in France and internationally, our activities are carried out in strict compliance with applicable laws and regulations. Ensuring that our staff respect our ethical standards and our fundamental values is an integral part of RAZEL-BEC's corporate culture.

POLICY AND ORGANISATION: The RAZEL-BEC Group develops, maintains and optimises a management system that is in harmony with its values, its commitments and its charter for sustainable development. Our wish is to optimise our organisation, our activities, and the conditions in which they are carried out in order to increase our clients' satisfaction and preserve the health and safety of our employees. The group operates a tailored and efficient management system that protects the environment and improves its efficiency.

HEALTH & SAFETY: Safeguarding the physical and moral health of our employees and of all those working on the project sites, including temporary staff and subcontractors, is at the forefront of our concerns. Hazard prevention is an ongoing concern and a priority area of progress for the company. A proactive "health & safety" policy has been deployed over recent years to reduce the number of occupational accidents and to develop a culture of hazard prevention.

RAZEL-BEC AND THE ENVIRONMENT: The environmental organisation and management system we operate, seeks to deploy an organisation and the appropriate means to minimise the impact of our activities on the environment by saving building materials and reducing waste, water and energy consumption. We also attach great importance to synergies with our clients and partners, local residents and the various environmental bodies in order to raise awareness, reduce our GHG emissions and protect the biodiversity.



Construction



Razel-Bec

CONTACT

CCI France Myanmar's Business Centre -
Times City – Office Tower n°2 – 16th Floor –
Units 11 & 12 - Between Hanthawaddy &
Kyuntaw Road - Kamayut Township – Yan-
gon - Myanmar
+ 95 9 260 922 782
www.razel-bec.com

PRESENTATION

Our Company, Razel-Bec, is the leading civil engineering and infrastructure company of the Fayat Group, our main and unique shareholder. Since its foundation in 1957 by Clément Fayat, the Fayat Group has grown to become the fourth largest company in France and the leading family-owned business in construction and industry sectors.

Founded more than 130 years ago, Razel-Bec is a large and innovative international civil works' contractor with a long history of earthworks and road works. The company's extensive experience means today that it can provide clients in the public and private sectors with high-performance technical responses in civil works construction projects such as dams, tunnels, bridges and roads as well as in the civil industry (water treatment plants, waste treatment plants, nuclear plants).

KEY FACTS & FIGURES

- Turnover (2018) : 750 M€
- Part of the turnover on the export mark (as per 2015) : 30%
- Employees : 5000





Recyglo

CONTACT

Royal River View Condo- 628/636 - 10th
Floor - Merchant Street - Yangon
contact@recyglo.com
+95 9 761 842 656
www.recyglo.com

PRESENTATION

At Recyglo, we're committed to providing environmentally friendly recycling solutions to Yangon, Myanmar and the surrounding areas. Founded in 2017, our mission is to process your materials in a safe, non-hazardous manner — with an aim to keep the world environmentally clean. We believe in promoting smart recycling habits in order to achieve long lasting results.

KEY FACTS AND FIGURES

- 500,000 USD projected revenue in 2020
- 20 full time employees and 10 part-time employees
- Projected 1,000 metric tons per month of waste recycle and recover in 2020



RMA Myanmar

CONTACT

No. 40 - Aurora Business Tower - 8th floor -
No. (1) Industrial road - Bahan Township -
Yangon - Myanmar
www.rmagroup.net

PRESENTATION

Headquartered in Bangkok, Thailand, RMA Group employs over 7,500 people and has an operational presence in 13 countries globally. RMA continues to be the partner of choice for leading automotive, equipment, services and food brands in Southeast Asia and beyond. In Myanmar RMA represents the following brands: Ford, Jaguar Land Rover, AVIS, John Deere, Himoinsa, Yanmar, HansaFlex, Karcher, Comin Asia, The Pizza Company and Swensen's.





ROSEWOOD YANGON

Rosewood Yangon

CONTACT

14 Strand Road - Kyauktada Tsp - Yangon
+95 1 230 790 0

PRESENTATION

Housed in a stunning 1927 heritage building, Rosewood Yangon features residential-style living spaces, distinctive dining venues and extensive meeting facilities featuring the Grand Ballroom.

KEY FACTS AND FIGURES

- 205 Rooms
- 2,200 Sqm Meeting Space
- 5 Restaurants and Bars



Royal Ruby

CONTACT

Head Office: Building 30 - Room 101 - First Floor - Zagawah Street - Dagon Township- Yangon
royalrubycompany@royalruby.com.mm
www.royalruby.com.mm

PRESENTATION

Royal Ruby Co.,Ltd. has been established in 1999, as a Trading & Distribution Company of Pharmaceuticals and Consumer Items in Myanmar. In 2001, we established Royal Ruby Manufacturing Co.,Ltd. for production of Traditional (Herbal) Medicine & Essential Oils. Parent Company was Shwe Yee Win Co.,Ltd. which was established back in 1989.

Our mission is to promote quality products and health education awareness. And vision is to become one of the best quality assured health product provider for the better health benefit of the community.

We have main office in Yangon, and branches in Mandalay, Taunggyi, Mawlamyaing and Nay Pyi Taw.

We have our suppliers from Indonesia, Denmark, Pakistan, USA.

KEY FACTS & FIGURES

- Trading, Manufacturing & Marketing Service
- Turnover: 2.5 million USD / Annual
- Number of Employees: 145





CONTACT

586 - Damayon Street - 6 Miles - Hlaing Township - Yangon-Myanmar
 damien.damuseau@safecomms.com
 www.safecomms.com/
 www.facebook.com/Safecomms.co.ltd/
 www.linkedin.com/company/safecomms/

SafeComs Myanmar

PRESENTATION

We have one simple mission:

- To create innovative solutions and provide peace of mind to our customers.
- To create a strong partnership committed to the achievement of their business objectives.
- To cultivate a challenging and responsible work environment and promote personal development.

SafeComs Network Security Consulting is an IT Security company, an industry leader and provider of top-quality IT Security solutions for SMBs, MNCs, and Government Bodies ever since its foundation in 1999.

KEY FACTS & FIGURES

- International IT company with employees from over 10 countries
- Management Software features over 300 modules
- More than 15 years of experience in Asia



Samitivej International

CONTACT

9(e)/2 - Kabar Aye Pagoda road - Mayangone Township - Yangon-Myanmar
 +95 1 657 987
 +95 1 667 592
 +95 1 656 732
 www.samitivejhospitals.com
 Samitivej Parami Clinic - Parami Hospital - 11th floor - 60 - G1 - Parami road - Mayangone - Yangon
 interclinic@samitivej-mm.com
 info@samitivej-yangon.com

PRESENTATION

Samitivej International Co. Ltd. is a joint-venture between Samitivej Hospital (Thailand) and Parami Hospital (Myanmar). The Samitivej Parami Clinic was opened in February 2014 and provides primary care and emergency (24/7) care services, observation & short hospitalization, domestic & international aeromedical transportation of patients, medical training and services to corporate clients.

Samitivej International Clinic was opened in July 2018 and provides primary care, follow up care to Myanmar patients who underwent treatment in Bangkok, and health checkup programs.

KEY FACTS & FIGURES

- Treat 1,000 patients per month
- Arrange 50 medical evacuations per month
- All medical staff received international training and certification.





Empowering Life

Life is a health journey, with its ups and downs and its challenges. These can be big or small, lifelong or momentary.

Sanofi is about Empowering Life. We are a diversified company centered on human health, operating worldwide and transforming scientific innovation into healthcare solutions from prevention to treatment.

As a health journey partner, we aim to support hundreds of millions of people facing health challenges, so they can experience life to its full potential.

Sanofi, Empowering Life.

www.sanofi.com



SANOFI

Empowering Life

Medical



Sanofi Myanmar

CONTACT

Office 5001 - (5th Floor) - Pyay Garden Office Tower - 346/354 - Pyay Road - Sanchaung Township - Yangon, -Myanmar
+95 1 856 527 0
www.sanofi.com
www.youtube.com/user/sanofiaventisTVen

PRESENTATION

Sanofi, a global healthcare leader, discovers, develops and distributes therapeutic solutions. Sanofi is organized into 5 global business units: diabetes & cardiovascular, general medicines & emerging markets, specialty care, vaccine and consumer Healthcare. Sanofi is listed in Paris and New York stocks exchanges.

Sanofi works to make quality healthcare easily accessible in Myanmar, with a new partnership with the Myanmar Medical Association to improve access to mental healthcare in the country.

This 3-year pilot program will benefit 12,000 people suffering from mental disorders. The program aims at reducing the treatment gap by 20% in psychoses, epilepsy and major depressive disorder within a year by integrating low-cost solutions in the existing healthcare system as well as leveraging the local expertise of community workers. We will also harness the international expertise of the World Association of Social Psychiatry (WASP) and Université Numérique Francophone Mondiale (UNFM) to sharpen the skills of healthcare professionals in Myanmar.



SBA Wines

CONTACT

No 80 - University Avenue - Bahan Township
- Yangon - Myanmar (Burma) - Yangon
+95 9 256914114
sales.executive@sbawines.com

PRESENTATION

SBA Wines has been an importer, wholesaler, and distributor of quality wine since 1998.

It provides Red, White, Rosé and Sparkling wines mainly from France but also from Italy, Spain, Australia, Chile, South Africa, Germany, Argentina, USA and Switzerland.

The company offers a wide range of products, starting with very affordable wines at \$6 and goes up to Great Growth classified wines from rare ancient vintages.

Looking for the quality on a first priority, and offering fair prices, SBA Wines has been evolving through years as one of the major distributors in Myanmar.

Its focus is on On-Trade, building from the beginning a strong relationship with hotels, bars and restaurants while strengthen the new entities.

SBA Wines offers free delivery within Yangon, and efficient training in order to support its clients.

Developing the wine and gastronomy in Myanmar is a major mission and SBA Wines takes it very seriously.

Schlumberger

Schlumberger

CONTACT

Diamond Condominium - 6th Floor - Tower E - Pyay Road - Kamayut Township - Yangon
+95 1 230 581 4
www.slb.com

PRESENTATION

Schlumberger is the world's leading provider of technology for reservoir characterization, drilling, production, and processing to the oil and gas industry.

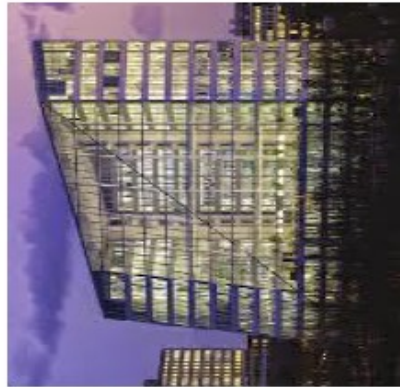
Working in more than 85 countries and employing approximately 100,000 people who represent over 140 nationalities, Schlumberger supplies the industry's most comprehensive range of products and services, from exploration through production and integrated pore-to-pipeline solutions for hydrocarbon recovery that optimize reservoir performance.

KEY FACTS & FIGURES

- World leader in Oil & Gas services
- 100,000 employees in 85 countries
- 2019 revenue of \$33 billion
- In Myanmar since 1933



Building Segment



Deloitte Office – Amsterdam, NL
Enabling the world's most sustainable office

The solution of Schneider Electric

- EcoStruxure™ Building Operation;
- EcoStruxure™ Power Monitoring;
- Electrical Distribution & Field Services;
- Implemented in part by our Building Management System (BMS) partner.

Customer Benefits

Energy efficiency and sustainability with 102% energy self-generated by the building

Data Center Segment



Animal Logic – Sydney, AU
Bringing characters to life for the silver screen with prefab data center solutions

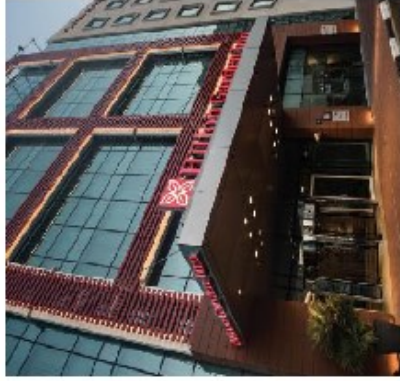
The solution of Schneider Electric

- EcoStruxure™ IT;
- Data Center Infrastructure Management (DCIM) Software;
- Customized prefabricated Modular Data Center, Integrated Power, Cooling & Monitoring.

Customer Benefits

Massive boost of animation productivity with an average operations speed of 1.25 petaflops

Hotel Segment



Hilton Garden Inn – Dubai, UAE
Digitizing one of the top hotel chains in the world

The solution of Schneider Electric

- EcoStruxure™ Building Operation; Full integration of the hotel's property management system with our Guest Room Management System (GRM);
- Full visibility and control of operations and energy consumption.

Customer Benefits

Enhanced guest-experience, building operational efficiency and LEED Gold Certification for 'New Construction'.



Energy - Construction

Life Is On



Schneider Electric

CONTACT

Times City – Office Tower n°2 – 17th Floor – Units 3/5/6 - Between Hanthawaddy & Kyuntaw Road - Kamayut Township – Yangon - Myanmar
+95 1 966 112 0
www.schneider-electric.com.mm/en/

PRESENTATION

At Schneider Electric, we are committed to providing innovative solutions that address the energy paradox: balancing our carbon footprint with the irrefutable human right to quality energy. Schneider Electric commits to ensuring Life is On, everywhere, for everyone, and at every moment. We balance this energy paradox through developing connected technologies and solutions that are safe, reliable, efficient and sustainable. Schneider Electric is leading the Digital Transformation of Energy Management and Automation in Homes, Buildings, Data Centers, Infrastructure and Industries.

In Myanmar, we have contributed our wide range of expertise and technologies to projects such as: the Sheraton Hotel, Novotel Yangon Max, Star City Condominium, MICT Data Center, the Coca Cola Factory, grid projects under M.O.E.E. (YESC, MESC, MEPE...) and many others.

KEY FACTS & FIGURES

- 200 years of history
- 137,000+ employees in 100+ countries
- €25.7 bn revenues in 2018;
- 5% of annual revenue devoted to R&D



Seagram Myanmar

CONTACT

SEAGRAM MYANMAR

No. (10) - Oak Kyin Station Street - 16 Quarter - Hlaing Township - Yangon - Myanmar
 +95 1 230 539 9
 contact@seagram-myanmar.com
 https://www.seagram-myanmar.com

KEY FACTS & FIGURES

- Around 600 employees in Myanmar
- Head office and production unit in Yangon, national distribution network
- 10 commercial branches across the country



Seagram Myanmar

PRESENTATION

Seagram is a leading manufacturer and distributor of whisky in Myanmar. It was founded by the Win brothers, who also operate the largest distillery operations in the country.

Yoma Strategic and Delta Capital are shareholders of the company since 2014, and were joined by Pernod Ricard in May 2018. In the new joint venture company, Pernod Ricard will take the lead in managing the production facilities, extensive distribution network and brand portfolio.

Pernod Ricard is a global leader in wines & spirits, of French origin and now present in 86 countries on all continents with the most comprehensive portfolio in the industry including global icon such as Chivas Regal, Ballantine’s, Absolut and Martell.

Seagram Myanmar’s portfolio include Seagram’s High Class (blended with aged Myanmar whiskies), Seagram’s Imperial Blue (#3 whisky brand globally) and Seagram’s 100 Pipers blended scotch whisky.



SEA LION

CONTACT

181 - Bo Myat Htun Street - Botahtaung Tsp - Yangon
 +95 1 299 797
 http://www.sealiongroup.com

KEY FACTS & FIGURES

- SEA LION received 2015 Emerging Market Healthcare Leadership Award by the World Medical Tourism Association in Orlando, Florida, USA on September 27, 2015.
- SEA LION received ASEAN Business Awards 2019 ASEAN Winner - Skills Development (Large-Tier) by the ASEAN Business Advisory Council in Bangkok, Thailand on November 2, 2019.



SEA LION

PRESENTATION

SEA LION, established in 1997, is a trusted partner of over 50 multinational corporations in healthcare, technical and vocational education and training, industrial automation, and information technology. Sea Lion’s global partners include IBM, GE, Johnson and Johnson, Medtronic, BD, 3M, and Festo. SEA LION has been partnered with Bangkok Dusit Medical Services PLC (BDMS), Thailand’s leading premier healthcare group, since 2002 and become the most comprehensive medical tourism service in Myanmar. SEA LION and N Health Asia, a wholly owned subsidiary of BDMS, joined forces in the year 2015 to establish a quality clinical laboratory in Yangon.

Our subsidiaries - Option Endoscopy Centre and Bahosi Fertility Centre in Yangon and Aryu Thukha Multi-specialty Clinic in Mandalay are renowned healthcare providers in Myanmar.

The SEA LION Distribution Solutions Centre opened in 2019 is designed to comply with regional and international regulations and has the most modern infrastructure including climate controlled warehousing.



Formerly known as OGAS

CONTACT

No. (135/K3) - Ward 10 - Than Lwin Lane
 Kamayut Township - Yangon
 +95 1 652 811
 +95 1 387 634
 contact@seaowlgroup.com
 www.seaowlgroup.com

SeaOwl Energy Services

PRESENTATION

The SeaOwl Group is a specialist provider of integrated services and project management solutions to the Oil & Gas, Maritime and energy industries worldwide.

Our goal is to provide quality solutions to all of our client including in complex environments. As a result we have established long lasting relationships with NOCs, Majors and independent oil Co, Governments and EPCIC contractors in over 35 countries.

SeaOwl Energy Services is implanted in Myanmar since 2013.

Our services range from technical assistance, to integrated services and asset management:

- HSE & risk management services
- Drilling & engineering services
- Asset management services
- EPCIC services
- Marine & subsea services
- and associated competency training



Servier

CONTACT

62 U Wisara Road - Yangon - Myanmar
 +95 1 242 291
 www.servier.com
 www.facebook.com/Servier/
 twitter.com/servier?lang=en

PRESENTATION

Servier, an international pharmaceutical group governed by a non-profit foundation. We are focused on cardiovascular diseases, diabetes, neuropsychiatric diseases and committed to therapeutic progress to serve patient needs.

We contribute to transmit to future generations a world that can ensure access to quality health care for all. With 64 million patients treated worldwide by our medicinal products on a daily basis, we are keenly aware of our responsibilities to patients, doctors, and healthcare professionals. They are the motivating force behind our daily drive for innovation as a provider of therapeutic progress.



KEY FACTS & FIGURES

- 22,000 employees in 149 countries
- 25% of turnover invested in R&D
- Turnover in 2018: 4.2 billion Euros



CONTACT

Hong Kong - Laford Centre - Units 1001 - 02
10/F - 838 Lai Chi Kok Road - Cheung Sha
Wan - Kowloon
+ 85 2 281 662 80
andy.das@sgtgroup.net
sam.lau@sgtgroup.net
www.sgtgroup.net
www.facebook.com/sgtonline
www.linkedin.com/company/sgt-group
twitter.com/sgttextile

SgT

PRESENTATION

Created in 1990, SgT is an independent service company with an international scope. With its head office in Hong Kong, SgT group of companies provide services of quality control in different countries in Asia.

SgT covers major countries of textile production in Asia and Euro-Mediterranean regions. SgT is specialized in textile (garments, fabrics, fashion accessories, textile accessories, bags luggage, shoes); SgT's expertise covers the following main product categories with dedicated teams and process; city wear, children wear, sportswear, luxury and high end, underwear, professional wear, leather items and so on. SgT provides tailor made and extensive solution in order to help its customers gain competitive edge.

KEY FACTS & FIGURES

- 571,000 inspections and 35,000 factories visited
- 1,981 pieces checked
- 350 professionals in 20 countries



SMPP Legal

SMPP Legal

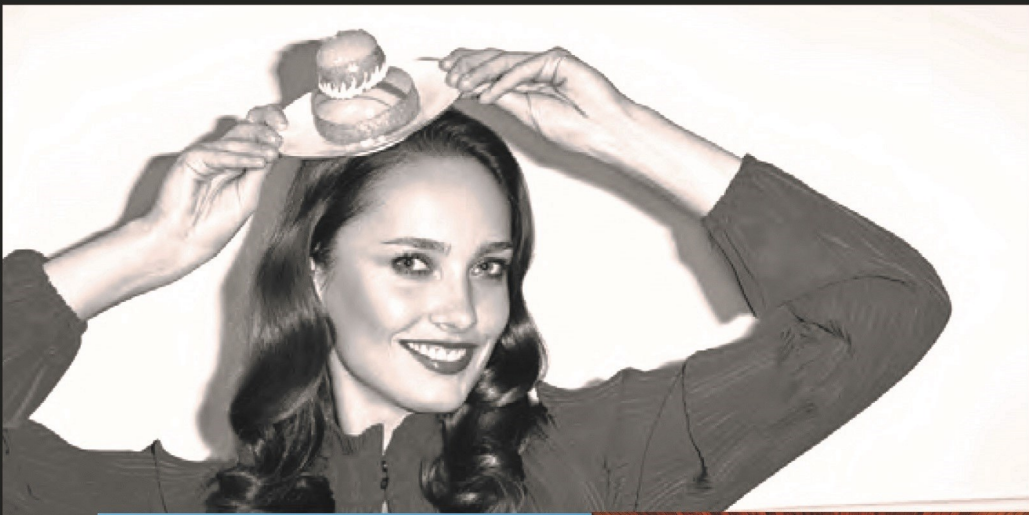
CONTACT

No.35 - 4th Floor - Corner of Aung Chan
Thar 2 Street and Yadana Street - Kamayut
Township - Yangon - Myanmar
+95 9 791 749 14, +95 9 954 310 02
admin@smpplegal.com
www.smpplegal.com

PRESENTATION

At SMPP Legal, we use our extensive legal experience and local knowledge to create high quality, effective solutions tailored to our clients' specific business goals. Our advice is timely, practical and results oriented based on our understanding of what foreign investors require in the emerging Myanmar market. We have extensive knowledge of the investment environment in Myanmar and enjoy excellent relations with the relevant government authorities at both the national and regional administrative levels.





Live the French way

Located on the Eastern edge of the lake, the resort offers luxury and elegance throughout. Ideally located in a picturesque area overlooking the Inle Lake the resort offers 101 contemporary & traditional design suites and Villas

Book your stay at sofitel.com
 HA095-RE@sofitel.com,
 TEL +95 (0) 9442 635270 - 78

S O F I T E L
 INLE LAKE MYAT MIN

Hospital



Sofitel Inle Lake

Myat Min

CONTACT

Thalae Oo Village – Nyaung Shwe Township
 - Southern Shan State– Myanmar
 +95 9 442 635 270-8
 HA095-RE@SOFITEL.COM
www.sofitel.accorhotels.com/gb/hotel-A095-sofitel-inle-lake-myat-min/index.shtml

PRESENTATION

Sofitel Inle Lake Myat Min is a luxury boutique resort ideally located and overlooking the picturesque Inle lake and rice fields. Offering 101 suites, dining facilities, fitness and wellness center.

Sofitel Inle Lake Myat Min combines French art de vivre with local traditions to create a breathtaking haven on the edge of a UNESCO biosphere reserve spectacularly located on the shores of Inle Lake. Overlooking the waters, mountains and rice fields, the luxury boutique resort is the perfect place to welcome couples and travelers looking for serenity in Myanmar’s Shan state.

The resort is generously designed and furnished using authentic local art and craft. It symbolizes the joy of simple yet refined way of life, the abundance of nature and the creation of beauty out of space and nothingness.





SUEZ Consulting

CONTACT

C/O Mandalay City Development Committee (MCDC) - 26th Street - Between 71st & 72nd Street - Mandalay
 www.suez.com
 www.safege.com/en/

KEY FACTS & FIGURES

- 70 years of operations
- 1400 specialists worldwide
- A group of over 90,000 staff



PRESENTATION

Suez Consulting (formerly Safege), a multi-disciplinary engineering subsidiary of Suez group, works with local authorities, public bodies, public service providers, businesses and industrial facilities in fields related to its four core business sectors: water and wastewater infrastructure, environment and waste, urban development and transport, energy and telecommunications. A designer of sustainable solutions benefiting of the expertise and experience of Suez group, Suez Consulting brings together 1,400 employees, specialists and experts and regularly operates in over 70 countries. In Myanmar, Suez Consulting is helping to pursue the objective of sustainable development since 2014 in notable projects such as: Mandalay Urban Services Improvement Project (MUSIP) covering water supply, wastewater, drainage, solid waste, transportation, institutional strengthening and capacity building and Preparation of urban services improvement project covering solid waste management and water supply in provincial towns (Hpa-An and Mawlamyine) of Kayin and Mon states along GMS Corridor and Yangon Urban Services Improvement Project (YUSIP).



"CCI France-Myanmar works hard for its members and MLR has enjoyed a number of benefits over the years such as credibility and visibility for the business, networking opportunities, gaining a voice in government and acquiring customers referrals."

Remi Nguyen - Managing Director

MLR Company Limited



"We open CMA Ships Myanmar office in Yangon end of 2018, after contact taken with Guillaume we became member."

Honestly, the first reason was more to support French business development in Myanmar as we are French group, but from the beginning, they were very helpful with advices, networking, but also trainings and recruitments. We saved a lot of time and energy thanks to the CCI and built a strong network in Myanmar."

The kindness and enthusiasm of the team are communicative, we were sponsor of gala dinner in 2019, and we hope to continue that excellent cooperation."

Pauline Dumas - Managing Director

CMA Ships Myanmar



Retail - FMCG



Super Global Advanced Enterprise

CONTACT

No 21 - Ywar Ma Kyaung Street - Hlaing Township - Yangon - Myanmar

PRESENTATION

Super Global bring the quality wines from Maison Rivier. It situated in Bordeaux, France. Maison Rivier is one of the best wines production company in France. We are providing to you with very low cost with the high qualities.

We endeavor to provide the best service and products for satisfactory of our customers and consumers.

We create career opportunities and human capital development program for our employee.

Super Global Advanced Enterprise – Wines Distribution



Address : No. 21, Ywar Ma Kyaung Street, Hlaing Township, Yangon, Myanmar.

Contact : +95 9969933616 / +95 9969933623





Synapse Original

CONTACT

102 Thitsar Road - Yankin Township - Yangon
 +95 9 950 808 968
 contact@synapseoriginal.com
 www.synapseoriginal.com
 www.facebook.com/synapse-original/
 www.linkedin.com/company/2818186/

PRESENTATION

Synapse Original is a 360° Advertising Agency resulting from a fusion of international teams, including creative talent and operational expertise with in-depth knowledge and intuition of the country and its people. Creativity is our DNA. We use it to talk to your customers in a Human to Human way because the goal is to inspire them. It's all about creating remarkable content that draw people in. Real experiences that create the WOW factor and turn your target into brand advocate. Why 360°? Because we define new limits of communication through cross-media campaigns in order to create a real impact online and offline. We believe that the key is to use different media to tell different parts of a story.

KEY FACTS & FIGURES

- Services are Strategy, Branding, Design, Video, Social Media, Web, Media Planning, Event and PR
- Trusted by Heineken, KFC, Dove, Tiger Beer, Myanmar Plaza or Pandora
- Team members from 4 different countries



T & E International

CONTACT

17/B - 4th Lane - West Shwegonedine - Bahan Township - Yangon
 +95 1 510 933
 +95 1 525 737
 +95 1 539 839
 tneintco@gmail.com
 www.linkedin.com/in/tne-int-l-243b6512b/

PRESENTATION

T&E international Company Limited has been established since 1993 as a 100% Myanmar owned company and has steadily expanded its activities, especially in the Oil & Gas field in Myanmar. T&E is a consultant management system (CMS) member of Asian Development Bank started from 2013.

T&E International Company's main activities encompass:

- Manpower
- Consulting and other services for international group
- Logistics
- Security
- Environmental services
- Facility maintenance service
- Maintenance for Hotels
- Catering services
- Service provider for Water Production, Water Distribution and Water Treatment.





THE STRAND
YANGON



TIMELESS ELEGANCE AT THE STRAND

Highly acclaimed as one of Southeast Asia's leading luxury hotels, the iconic Strand Yangon built in 1901 has been a city landmark since Aviet and Tigran Sarkies, the hoteliers responsible for many of the finest colonial hotels in the region. Since that time, the Strand has become the social epicentre of Yangon for locals and international travellers, and was declared 'the finest hostelry East of Suez' by John Murray in his Handbooks for Travellers written in the early 20th century. The 32-suite Strand Yangon remains one of Southeast Asia's few grand colonial hotels and one of its most architecturally beautiful.

Members get 15% off all Suites and Food & Beverage outlets

Terms and conditions apply



LEADING
HOTELS®

HOTELTHESTRAND.COM
92 STRAND ROAD, YANGON, MYANMAR
TEL 01 8 243 377 INFO@HOTELTHESTRAND.COM

Hotel and Cruise



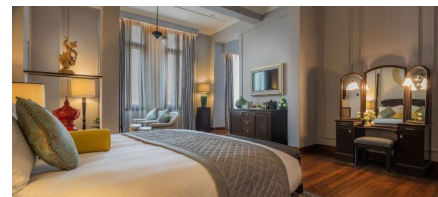
THE STRAND
YANGON

CONTACT

92 Strand Road - Yangon - Myanmar
+95 1 8 243 377-92
info@hotelthestrang.com
www.hotelthestrang.com

KEY FACTS AND FIGURES

- 32 Suites
- Swimming Pool
- Therapy Rooms
- Gym
- The Strand Café (All-Day Dining)
- The Strand Restaurant (Fine Dining)
- Sarkies Bar
- Meetings
- Weddings



The Strand Yangon

PRESENTATION

Highly acclaimed as one of South East Asia's leading luxury hotels, the iconic Strand Yangon has been a city landmark since Aviet and Tigran Sarkies, the hoteliers responsible for many of the finest colonial hotels in the region founded it in 1901. In November 2016, The Strand Yangon entered a new era as it reopened after a six-month restoration project that saw the luxury heritage hotel ushered elegantly into the 21st century. Local artisans meticulously restored every original architectural detail of The Strand Yangon, from the teak panelling and antique bedsteads of the hotel's 32 suites, to traditional Myanmar lacquer ware and marble flooring, whilst giving the hotel a complete upgrade and contemporary twist through the latest technology, a refreshed colour palette and subtle decorative details. In November 2017, The Strand Yangon completed its transformation into Yangon's finest urban resort with the addition of a new outdoor swimming pool, dining terrace, therapy rooms, gym and private garden.



Thura Swiss

CONTACT

Shwe Hinthar - B-307 - 6,5 Miles Pyay Road -
Hlaing Township - Yangon
+95 1 654 730
info@thuraswiss.com
www.thuraswiss.com/
www.facebook.com/ThuraSwiss

KEY FACTS & FIGURES

- 130 projects and 1,000 in-depth interviews
- 500,000 contacts in database
- Call center with capacity of 15,000 calls per month



PRESENTATION

Thura Swiss is a Myanmar-based market research, consulting and financial advisory firm. The company was founded in 2012 by Dr. Aung Thura, a Myanmar national and former investment banker raised and educated in Switzerland, who worked for prestigious banks such as Credit Suisse and the Zürcher Kantonal Bank. Since its inception, Thura Swiss has been involved in various projects across different sectors in both private sector and public sector due to its proven ability in delivering services on par with international standards. We fuse the benefits of being on the ground with experience gained abroad to equip both local and foreign businesses with accurate and sophisticated information to help them make strategic, data-driven decisions with regards to their market entry or expansion in Myanmar. We also help our clients to benchmark against their relevant competitors by providing necessary market insights.



Training Catalogue 2019-2020



Download our Training Catalogue for free on

www.ccifrance-myanmar.org

TOTAL E&P MYANMAR

Total E&P Myanmar (TEPM) is the Operator with a 31,2% interest (M5/M6 offshore blocks) of the Yadana Consortium along with its partners MOGE, Chevron and PTTEP. The Yadana Consortium produces gas from the offshore Yadana Gas field since 1998. It currently supplies around 50% of Myanmar domestic gas consumption while exporting around 600 Mscfd to Thailand (~12% of the Thai gas consumption).

Total E&P Myanmar (TEPM) also holds interests in 5 explorations blocks offshore Myanmar with various partners.

The Total Group is also promoting an LNG to Power project in the area of Kanbauk that includes building a Floating Storage and Regassification Unit (FSRU), a 1.23 GW Power Plant and a 500kv transmission line.

TEPM is committed to Corporate Social Responsibility as a core policy embedded in its operations. It prescribes Ethics, HSE, Code of Conduct and Voluntary Principles on Safety and Human Rights principles to all stakeholders, while maintaining one of the most advanced human resources policy in Myanmar. As part of its commitment towards Myanmar and its local communities, TEPM has implemented since 1995 major Socio-Economic programs in the pipeline area to improve health, enhance access to education and skills development, access to energy, economic development through micro finance, etc. Such programs benefit to 33 villages with around 45,000 people and have become along the years a world class reference in term of CSR and an asset for Myanmar. TEPM also develops nationwide CSR programs and is actively involved in the Myanmar EITI process.



No. 5, Sacred Tooth Relic Lake Avenue,
Punn Pin Gone Quarter No.5,
Mayangone Township
Yangon, Union of Myanmar

Energy - Oil & gas



Total E&P Myanmar

CONTACT

Address (France):

2 Place Jean Millier - La Défense 6 -
92400 Courbevoie - France

Address (Myanmar/Region):

No. 5 Sacred Tooth Relic Lake Avenue -
Punn Pin Gone Quarter - No. 5 - Mayangone
Township - Yangon - Myanmar

PRESENTATION

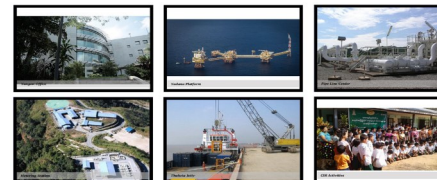
Total E&P Myanmar (TEPM) is an Oil and Gas Exploration and Production Company and the Operator of Yadana Gas Field in M5 and M6 offshore blocks with a 31.2% interest of the Yadana Consortium along with its partners MOGE, Chevron and PTTEP. The Yadana Consortium produces gas from the offshore Yadana Gas field since 1998. It currently supplies around 50% of Myanmar domestic gas consumption while exporting around 600 MSCFD to Thailand (~12% of the Thai gas consumption).

Exploration is currently under way at the following blocks:

- YWB (100%, operator), offshore
- A6 (40%), deep offshore
- MD-2 (40%) and MD-4 (50%), deep offshore
- MD-7 (50%), deep offshore

KEY FACTS & FIGURES

- Date of Creation : July 1992
- Employees: 287 (incl. organic contracted staff)
- Myanmar Staff: 92%





TRACTEBEL (Engie)

CONTACT

France - 5 rue du 19 mars 1962 - 92622 Gennevilliers cedex

Myanmar - 17B 4th Lane - West Shwegondine - Bahan Township - Yangon

+95 1 510 933

www.tractebel-engie.com

PRESENTATION

At the helm of the Energy Transition, Tractebel provides a full range of engineering and consulting services throughout the life cycle of its clients' projects, including design and project management. As one of the world's largest engineering consultancy companies and with more than 150 years of experience, it's our mission to actively shape the world of tomorrow. With about 5,000 expert and offices in 70 countries, we are able to offer our customers multidisciplinary solutions in energy, water and infrastructure.

Tractebel has been active in Myanmar since 1980's and has a registered Myanmar Branch with over 10 ongoing projects, from prefeasibility study to feasibility study, project implementation consultant and owner engineer, including hydro, gas and solar power projects as well as mini grid, national grid and urban construction projects. In Ayeyarwaddy and Tanintharyi Regions, Tractebel completed LNG to power studies in Patheingyi and Dawei, and now seeks to support further energy as well as infrastructure projects.

KEY FACTS & FIGURES

- Turnover: 662 MEUR
- Employees: 5,000
- Offices worldwide: 70



Travel With Me

CONTACT

Yangon Innovation Center - Seedspace Yangon - Kyan Mar Yay Seik Kan Compound - Corner of Pansodan Road and South of Kannar Road - Seikkan Township - Yangon - 11182

+95 9 799 320 052, +95 9 970 405 275

<https://travelwithme7755.wixsite.com/travelwithme>

PRESENTATION

About us - Travel With Me, a youth-based organization, was founded in 2017 for the young people who are interested in tourism and sustainable development. Our visions are to widen the participation of youths in the development of responsible tourism in Myanmar and to contribute environmental awareness in tourism.

What We Do- At Travel With Me, each client is unique. Our business projects are Just Around You - Walking Tour, Events Planning and Campaigns. We provide the best quality services to other cooperate businesses are promoting and advertising service, review products and services, and consultation service.

What people are saying- Young people get interested in Travel With Me and increase their involvement. In addition, people on social media engagement increased and other business are waiting for our providing services to cooperate in our business projects.

KEY FACTS & FIGURES

- 41K followers on Facebook Page
- 200+ Participants in Walking Tour
- 5 Business Partner Company and 10 Collaborative Organizations





Ulink Assist Myanmar

CONTACT

Times City – Office Tower 2 – 16th floor –
Unit 9 - Between Hantawaddy & Kyuntaw
Roads - Kamayut Township – Yangon – My-
anmar
+95 9 792 888 622, +95 9 792 888 611
enquiry@ulinkmyanmar.com
<https://www.ulinkmyanmar.com/>
<https://www.facebook.com/ulinkmyanmar/>

PRESENTATION

Ulink Assist currently operates the largest independent TPA in Myanmar. Our clients include Aviva, MGEN, ACS, WTW, Petronas, Japan Tobacco, Telenor, etc., for which we provide the full range of health insurance third party administration services, including issuance of GOPs for cash-less treatment, claims assessment and reimbursement, 24/7 hotline, issuing member cards, etc. We also provide the full range of assistance services including ground and air ambulance transfers, RMR, medical team escorts, doctor home visits, etc. Our office in Yangon includes doctors and English and Burmese speakers, and Ulink currently operates the largest cash-less provider panel with 25+ hospitals and clinics across Myanmar. See: <https://www.ulinkmyanmarinsurance.com/> and attached.

KEY FACTS & FIGURES

- 25+ Healthcare providers
- 4 Regional offices
- 1,000+ Insurance claims



Veolia Water Technologies

CONTACT

France - L'Aquarène - 1 Place Montgolfier
94417 Saint-Maurice
+33 1 451 156 30
www.veoliawatertech.com/asia/
www.linkedin.com/company/veolia-water-technologies/

PRESENTATION

Veolia Water Technologies provides the complete range of services required to design, build, maintain and upgrade water and wastewater treatment facilities and systems for industrial clients and public authorities.

Our portfolio of more than 350 technologies features everything from online diagnostic solutions to evaporation and crystallization, sludge treatment and waste to energy production, state-of-the-art desalination, laboratory grade ultrapure water treatment and mobile water treatment solutions.

Veolia Water Technologies combines expertise with innovation to offer technological solutions suited to each application. Using water resources to create sustainable, cost-effective solutions is our main focus



KEY FACTS & FIGURES

- Revenue in 2017: 1.8 billion Euros
- Employees in 2017: 8,658 worldwide



Vinarco

CONTACT

CCI France Myanmar's Business Centre -
Times City – Office Tower n°2 – 16th Floor –
Units 11 & 12
Between Hanthawaddy & Kyuntaw Road
Kamayut Township – Yangon - Myanmar
+959 425450546
www.vinarco.com/
www.linkedin.com/company/vinarco-services-group-of-companies/

PRESENTATION

Founded in 1993, our group is an independent service provider of flexible manpower and project management solutions for the Oil & Gas, Power and ICT Telecom industry, with a strong regional reach in South-East Asia. We deliver comprehensive, solution-oriented service lines that help generate greater benefits for our clients, supporting O&G Operators, EPCIC contractors or Power Projects with turnkey services including O&M general services, long term assets management, construction installation & commissioning management, drilling & production supervision, or ICT Telecom solutions. Vinarco Energy Services offers you the best possible support to make your operations safer, more efficient and more reliable.

KEY FACTS & FIGURES

- Oil & Gas
- Power
- ICT & Telecom



Vivablast

CONTACT

Factory - 82-E - Corner of U Pho Hlaing Road
& U Tun Nyo Street - Ward 113 - East Dagon
Industrial - Yangon
www.vivablast.com
www.facebook.com/vbmyanmar/

PRESENTATION

Vivablast is a service company providing maintenance services for assets of the industrial, infrastructure, power generation and oil and gas sectors.

Historically founded in Ho Chi Min City in Vietnam in 1994, Vivablast expended its operations to Myanmar in 2015, where it has now established a blasting and painting workshop in East Dagon industrial zone.

Vivablast employs a skilled workforce of 70 workers able to deliver blasting, coating, insulation, waterproofing, fireproofing, fabrication, scaffolding and rope access services according to international standards in a safe working environment.





Voltalia

CONTACT

Uniteam Marine Office Building - 8th Floor -
Unit#1 - No 84 - Pan Hlaing Street - San-
chaung Township - Yangon - Myanmar
www.voltalia.com

PRESENTATION

As an international and integrated renewa-
ble energy company, Voltalia develops,
finances, builds and operates power plants
of diverse technologies: wind, solar, hydro,
biomass and storage.

In addition to generating electricity from its
own assets (IPP), the Company provides
services (EPC, O&M) to third-party clients.
Voltalia owns a total installed capacity of
more than 1 GW and targets an installed
capacity of 2.6 GW by 2023.

Voltalia is established in 20 countries over 4
continents with more than 600 employees
worldwide. Voltalia defined local develop-
ment as a key element in its relationships
with all its partners. This enables the Com-
pany to build long-term relationships based
on mutual trust with all stakeholders in-
volved in projects, from development to
operation.

KEY FACTS & FIGURES

- €181 million of revenues in 2018
- €1.13 billion of total assets
- 1.9 GW EPC ; 1.1 GW O&M ; 1 GW IPP
- 7.1 GW in prospection



World Wide Fund for Nature (WWF)

CONTACT

15/C - Than Taman street - Dogon Township
-Yangon
+95 9 229 331
<http://www.wwf.org.mm>
<https://www.facebook.com/wwfmyanmar>
[https://www.linkedin.com/company/wwf-
myanmar/about](https://www.linkedin.com/company/wwf-myanmar/about)

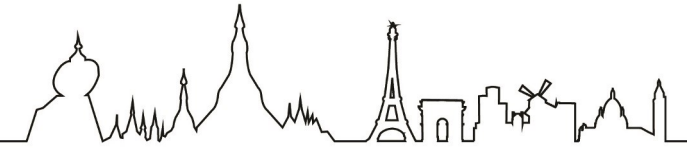
PRESENTATION

WWF is one of the World's largest and most
respected independent conservation organi-
zations, with over 5 million supporters and a
global network active in over 100 countries.
WWF's mission is to stop the degradation of
the Earth's natural environment and to build
a future in which humans live in harmony
with nature, by conserving the world's bio-
logical diversity, ensuring that the use of
renewable natural resources is sustainable,
and promoting the reduction of pollution
and wasteful consumption. WWF-Myanmar
opened in 2014. Its work programmes in-
clude wildlife, habitats, green economy,
renewal energy, freshwater, and sustainable
business.

KEY FACTS & FIGURES

- Established in 1961
- Offices in over 100 countries and territories
- Over 6000 staff around the world
- Opened Myanmar office in 2014





Yangon Excelsior Hotel

CONTACT

19/43 - Bo Son Pat Street - Pabedan Tsp - Yangon
 +95 1 925 386 1
 info@yangon-excelsior.com
 Www.yangon-excelsior.com

PRESENTATION

The prestigious Yangon Excelsior is an elegant and luxurious boutique-hotel which stands in Yangon's downtown area, it has been painstakingly refurbished from the Heritage Building of the Head quarter of Steel Brothers Limited Company in early 19th century. With 74 modern and comfortable rooms, one Café Deli Bar- The Newsroom, Steel Brothers Wine & Grill restaurant, gym and spa, and two meeting rooms, the Yangon Excelsior Hotel is perfect base from which to explore the city. Centrally located for the ease and convenience of the curious leisure travellers and busiest business travellers, the hotel is a gentle reminder of a simpler era while providing the contemporary comforts everyone needs.

KEY FACTS & FIGURES

- Heritage Building since early 19th century
- 74 modern and comfortable rooms
- Located in downtown area



Yangon Property Management

CONTACT

Parkside One building - 271-273 - Bagayar Street - Sanchaung Township - Yangon
 info@parksidene.com
 +95 1 535 220
 www.parksidene.com

PRESENTATION

Located in front of People's Park, our building offers great office standards and unique view on Shwedagon Pagoda. It was awarded *Best Building Renewal* and *Best Office Development* at the 2015 Myanmar Property Awards. Flexible layout is provided to fit your needs of our tenants. In addition, all floors are already fully equipped, and we provide 24/7 security, reception services, access cards for gates and lifts, generators, and the building is open 24 /7. In addition, car parks are available. You will also find two ATMs in our lobby. Moreover, events and work luncheons are regularly organized at *The Penthouse*, our fabulous rooftop lounge and restaurant. Finally two Chambers of commerce operate in the building, which brings great opportunities to develop your business base.

KEY FACTS & FIGURES

- Smart office space offering international standards in services and technologies
- Strategic location
- Flexible layout to fit the specific needs of your company





Yangoods (Creative Access)

CONTACT

No.8 - Khattar Street - Thiri Khay Mar Ward -
Sanchaung Township -Yangon
+95 9 952 255 153
sales@yangoods.com,
mktex01@yangoods.com
www.yangoods.com
www.facebook.com/yangoods
www.facebook.com/YangoodsCorporate/
www.linkedin.com/company/yangoods

PRESENTATION

Yangoods is a pioneering Myanmar brand that set out to rejuvenate Burmese design. We carry on the traditions and iconic art from Myanmar by blending the land’s unique culture with 21st century sensibilities. We offer an ever-expanding product line ranging from fashion accessories, decors to memorable gifts for resident cultural/fashion enthusiasts to business seeking quality bespoke items. Supported by an active fan base, Yangoods takes inspiration from the land, giving them a touch of 21st century. Setting up a high quality standard, the team shares this unique Myanmar experience to the world.

KEY FACTS & FIGURES

- 7 Boutiques in Yangon, Bagan and Mandalay with over 22 consignments
- Developed over 70 B2B contracts
- Over 1000 products and 50 canvas designs
- Expanded to Thailand and Switzerland



Yever

CONTACT

No. 27 Aung Zeya Road - Room 501 - Yankin
Township - Yangon - Myanmar
+95 9 422 091 979
contact@yever.org
www.yever.org
https://www.facebook.com/
yever.consulting/

PRESENTATION

Based in Yangon, Yever is a consultancy offering custom-made solutions to corporate leaders. Our team works with Myanmar organisations to make their practices smarter, stronger and more sustainable. We can transform your organization in many ways, including improvements to your corporate governance, communications, business strategy, and performance. We can also carry out research or help to build your capacity. We are convinced that responsible and sustainable businesses will be instrumental in building a stronger Myanmar. We strive to provide you with the tools and insights to do so.

KEY FACTS & FIGURES

- Certified B Corporation
- Founded in 2016
- 10 people working from Yangon
- More than 15 local clients



We are the first Certified B Corporation in Myanmar. Certified B Corporations are leaders of a global movement of people using business as a force for good. They meet the highest standards of overall social and environmental performance, transparency and accountability and aspire to use the power of business to solve social and environmental problems.

A Fully Inclusive Fleet Solution For Your Business



yomacarshare.com

- Rent hourly, daily, weekly, monthly
- Available nationwide
- One way rental available
- 24/7/365 Hotline roadside assistance
- International standard insurance coverage

YOMARentals.asia

- Availability of one-way rentals between rental hubs
- Reduces supply chain costs
- Greater flexibility during peak demand

Locations
📍 Yangon 📍 Mandalay 📍 Myawaddy 📍 Muse



YOMA AutoMart

The first online car auction site in Myanmar

YOMALeasing
Vehicle Financing Solutions

Financial solutions for SME and retail customers



Yoma Fleet

CONTACT

- The Campus - 1 Office Park - Rain Tree Drive
- Pun Hlaing Estate - Hlaing Thayar Township
- Yangon - Myanmar

PRESENTATION

Yoma Fleet is the leading leasing and rental company of new vehicles and equipment in Myanmar. Our fleet ranges from small sedans through vans, commercial trucks, semi-trailer rigs and heavy equipment on a self-drive basis. Our fleet and service levels are best practice with a particular emphasis on safety and insurance coverage to full international standards. Specifically our services cover:

- Self drive daily rental - www.yomacarshare.com
- Contact hire - www.yomafleet.com
- Truck & trailer daily rental - www.yomarentals.asia
- Vehicle sales - www.yomaautomart.com
- Vehicle financing - www.yomaleasing.com

KEY FACTS & FIGURES

- Nationwide coverage with 25 rental hubs servicing a fleet of over 1,200 vehicles
- 24/7/365 nationwide support (Call 09 YOMAFLEET)
- Competitive corporate fleet rates on new left hand drive vehicles and heavy equipment





CONTACT

43-Tamarind Garden - Pun Hlaing Golf Estate - Yangon
 +95 1 368 776 6
 info@spa-mm.com
 www.yomastrategic.com

Yoma Strategic Holdings

PRESENTATION

Listed on the Main Board of the Singapore Securities Exchange Trading Limited (SGX-ST), YSH is a leading business corporation with a diversified portfolio of businesses in Real Estate, Consumer, Automotive & Heavy Equipment, and Investments in Myanmar. Together with its partner, the SPA Group, YSH is taking a conglomerate approach to build a diversified portfolio of businesses in Myanmar. YSH was ranked in the top 5% of the Governance and Transparency Index 2017, ranked 17th out of top 100 largest Singapore companies in the Asean Corporate Governance Scorecard 2015 and won the Best Managed Board (Gold) Award at the Singapore Corporate Awards in 2016.

KEY FACTS & FIGURES

- Turnover: S\$124 million FY2017 (up from S\$112 million in FY2016)
- YSH Market Capitalisation: S\$1billion
- FMI Market Capitalisation: Ks. 335.7 billion US\$247 million
- Total Group Market Capitalisation: US\$1 billion



CONTACT

No. 18 - 5-B Kyauk Kone Street - 14th Quarter - Yankin Township - Yangon - Myanmar
 www.zinbrend.com

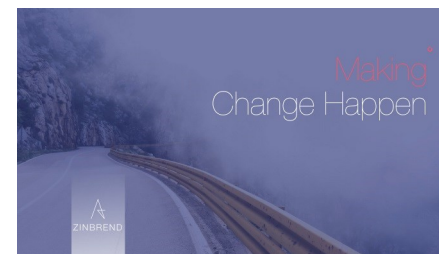
Zinbrend

PRESENTATION

Helping businesses transform the way they sell to match how people buy and providing business solutions [ERP, HRMS] to empower organizations.

KEY FACTS & FIGURES

- Founded by two former ERP consultants in 2019, Zinbrend assists a growing number of local and global business in their technological transformation.



They chose us



"Here at Yangoods, we're delighted of the Dynamism of the CCI France. We sent over a dozen staff to the various training proposed, always conveniently scheduled, timed and priced. We appreciate as well the extra exposure they give to companies, and the networking events. Overall they are of a great help and we're looking forward to many more years using their services."

Jean Curci - MD/ Director of Sales & Marketing

Yangoods



"The FMCCI team has been of valuable assistance throughout our setting up in Myanmar, and this at different levels. Always available to help and full of relevant advice, the FMCCI team has without a doubt accompanied us to ensure our implementation would be done successfully."

**Yann BARY - President
Acteus Group**



INDEX





Members by sector

Business services - Consulting

Acteus Group	32
Aden Services	34
AFSIM Co. Ltd	37
Archetype Myanmar	46
Banyan Green Services	55
Conyat Create	75
Dentons Myanmar	77
Hydro Plant	97
IAS-8	99
Javelin Services	110
Myanmar Bureau Veritas	141
Panellist Business Services	158
Pegaz Solutions	160
Phandeeyar	164
Recyglo	172
SgT	188
T & E International	197
Thura Swiss	200
Vinarco	208
Yever	215

Construction - Engineering

Artelia	47
BERIM	58
BYMA (Bouygues Construction)	64
FMIDecaux	84
Freyssinet	86
Green Vision	90
JDI Engineering	111
Myanmar Home Design	145
Myanmar Jardine Schindler	146

Razel-Bec	170
SUEZ Consulting	192
Veolia Water Technologies	207
Vivablast	209

Education

Inno Power	103
LFIR (French International School of Yangon - Joseph Kessel)	118
Lithan	119

Energy - Oil and Gas

EDF	80
Legrand	115
Schlumberger	181
Schneider Electric	182
SeaOwl Energy Services	186
Total E&P Myanmar	202
TRACTEBEL (Engie)	204
Volitalia	210

Environment

World Wide Fund for Nature (WWF)	211
----------------------------------	-----

Finance - Banking - Investment

AYA Bank	54
BRED Bank	62
CB Bank	71
Yoma Strategic Holdings	218

Food & Beverage

Annam Myanmar	44
Le Planteur Inya Lake	114
Myanmar Carlsberg Company Limited	142
SBA Wines	180
Seagram Myanmar	185
Super Global Advanced Enterprise	194

Insurance

InsurExcellence	105
LUMA	123
Poe-ma insurances	165
Ulink Assist Myanmar	206

Legal Services

Allen & Overy	43
Audier & Partners	51
DFDL Myanmar Limited	79
Livingstons Legal	120
Luther Law Firm	124
MLR Company Limited	139
SMPP Legal	189

Members by sector

Logistics

AGS Four Winds	38
Air France	40
Audi Myanmar— Automotive Asia (Myanmar)	50
Bolloré Logistics	60
CMA Ships Myanmar	72
CMA CGM	74
Dextra Transport	78
Peugeot Myanmar	162
Yoma Fleet	216

Manufacturing - Import - Distribution - Retail

Arc Distribution	45
Bioderma/ Naos/ Mintha Care	59
Carrefour	68
City Holdings Limited	72
Groupe SEB	91
IKON Group of Companies	102
International Group of Entrepreneur Company Limited (IGE)	106
Lesaffre	117
Mane Myanmar (V. Mane Fils)	126
Medi Myanmar	127
Mega Lifesciences	128
Melbourne	129
METRO Wholesale Myanmar	136
RMA Myanmar	173
Royal Ruby	175
Yangoods (Creative Access)	214



Members by sector

Media - Marketing

Akhuka Productions	42
Canal+ Myanmar	67
Havas Riverorchid	93
Inspiral Creative	104
Lepetitjournal	116
Nexlabs	150
Synapse Original	196

Medical

Action Contre la Faim	33
International SOS	107
Myanmar Assistance (Feti'a Assistance)	140
Okkar Thiri	156
Samitivej International	177
Sanofi Myanmar	178
SEA LION	184
Servier	187

Real Estate

Crown Advanced	76
Yangon Property Management	213

Recruitment

MyJobs Myanmar	148
MyWorld Careers	149

Telecommunications - IT

Camusat	66
Golden TMH Telecom	87

HQS	96
Nordic Tele Services	151
SafeComs Myanmar	176
Zinbrend	219

Tourism - Hospitality

Awei Metta	53
Belmond Governor's Residence	56
EXO Travel	82
Flymya	83
Grand Mercure Yangon Golden Empire	88
Gulliver Travels & Tours	92
Hotel G Yangon	94
ibis Styles Yangon Stadium	100
Inya Lake Hotel	108
KiwiGo	112
Lotte Hotels & Resorts	121
Melia Yangon Hotel	130
Mercure Mandalay Hill Resort	132
Mercure Yangon Kaba Aye	134
Mirandus Travel and Tours (Travelpro)	137
Novotel Inle Lake Myat Min	152
Novotel Yangon Max	154
Pullman Mandalay Mingalar	166
Pullman Yangon Centerpoint	166
Rosewood Yangon	168
Sofitel Inle Lake Myat Min	174
The Strand Yangon	190
Travel With Me	198
Yangon Excelsior Hotel	205
	212

Members by country

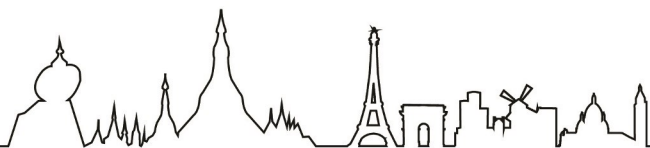
America

DFDL Myanmar Limited	79
Schlumberger	181
SMPP Legal	189

France

Action Contre la Faim	33
Aden Services	34
AGS Four Winds	38
Air France	40
Arc Distribution	45
Archetype Myanmar	46
Artelia	47
Audi Myanmar - Automotive Asia (Myanmar)	50
Audier & Partners	51
BERIM	58
Bioderma/ Naos/ Mintha Care	59
Bolloré Logistics	60
BRED Bank	62
BYMA (Bouygues Construction)	64
Camusat	66
Canal+ Myanmar	67
CMA Ships Myanmar	72
CMA CGM	74
Dextra Transport	78
EDF	80
FMIDecaux	84
Freyssinet	86
Grand Mercure Yangon Golden Empire	88

Havas Riverorchid	93
ibis Styles Yangon Stadium	100
International SOS	107
Legrand	115
Lepetitjournal	116
LFIR (French International School of Yangon - Joseph Kessel)	118
Livingstons Legal	120
LUMA	123
Mane Myanmar (V. Mane Fils)	126
Medi Myanmar	127
Melbourne	129
Mercure Yangon Kaba Aye	134
MLR Company Limited	139
Myanmar Assistance (Feti'a Assistance)	140
Myanmar Bureau Veritas	141
Nordic Tele Services	151
Novotel Inle Lake Myat Min	152
Novotel Yangon Max	154
Poe-ma insurances	165
Pullman Mandalay Mingalar	166
Pullman Yangon Centerpoint	168
Razel-Bec	170
SafeComs Myanmar	176
Sanofi Myanmar	178
Schneider Electric	182
Seagram Myanmar	185
Servier	187
Sofitel Inle Lake Myat Min	190
SUEZ Consulting	192
Synapse Original	196



Members by country

Total E&P Myanmar	202	Awei Metta	53
TRACTEBEL (Engie)	204	AYA Bank	54
Veolia Water Technologies	207	Banyan Green Services	55
Vivablast	209	Belmond Governor's Residence	56
Volitalia	210	Carrefour	68
World Wide Fund for Nature (WWF)	211	CB Bank	71
Yever	215	City Holdings Limited	72
		Conyat Create	75
		Crown Advanced	76
Germany		EXO Travel	82
Luther Law Firm	124	Flymya	83
		Golden TMH Telecom	87
Hong Kong		Green Vision	90
Hotel G Yangon	94	Gulliver Travels & Tours	92
IAS-8	99	HQS	96
SgT	188	Hydro Plant	97
		IKON Group of Companies	102
		Inno Power	103
		International Group of Entrepreneur Company Limited (IGE)	106
Ireland		Inya Lake Hotel	108
MyJobs Myanmar	148	KiwiGo	112
		Le Planteur Inya Lake	114
		Lesaffre	117
Korea		Lithan	119
JDI Engineering	111	Mega Lifesciences	128
Lotte Hotels & Resorts	121	Mercure Mandalay Hill Resort	132
		METRO Wholesale Myanmar	136
		Mirandus Travel and Tours (Travelpro)	137
Myanmar		Myanmar Carlsberg Company Limited	142
AFSIM Co. Ltd	37	Myanmar Home Design	145
Akhuka Productions	42		
Annam Myanmar	44		
	46		

Members by country

		Spain	
MyWorld Careers	149	Melia Yangon Hotel	130
Nexlabs	150		
Okkar Thiri	156	Thailand	
Panellist Business Services	158	Groupe SEB	91
Pegaz Solutions	160	InsurExcellence	105
Peugeot Myanmar	162	RMA Myanmar	173
Phandeeyar	164	Samitivej International	177
Recyglo	172	Vinarco	208
Rosewood Yangon	174		
Royal Ruby	175	United Kingdom	
SBA Wines	180	Allen & Overy	43
SEA LION	184	Javelin Services	110
SeaOwl Energy Services	186	Myanmar Jardine Schindler	146
Super Global Advanced Enterprise	194		
T & E International	197		
The Strand Yangon	198		
Thura Swiss	200		
Travel With Me	205		
Ulink Assist Myanmar	206		
Yangon Excelsior Hotel	212		
Yangon Property Management	213		
Yangoods (Creative Access)	214		
Yoma Fleet	216		
Zinbrend	219		
		Singapore	
Acteus Group	32		
Dentons Myanmar	77		
Inspirale Creative	104		
Yoma Strategic Holdings	218		

YANGON OFFICE

Times City – Office Tower n°2 – 16th Floor – Units 11 & 12
Between Hanthawaddy & Kyuntaw Road
Kamayut Township – Yangon - Myanmar
+95 9 425 450 546
contact@ccifrance-myanmar.org

MANDALAY OFFICE

Block 2 - Unit 5 - 2nd Floor
Between Mingalar 2 and 3 Street
Mingalar Mandalay Compound
Chan Mya Tar Zi Township – Mandalay – Myanmar
+95 9 798 975 853

