




Sustainable Development Opportunities & Challenges

Anastacia Howe

CONYAT
CREATE
ကွန်ရက်

A high-angle, night-time photograph of a wet city street. The pavement is highly reflective, mirroring the headlights of a line of cars and vans moving away from the viewer. On the left side of the frame, a person is riding a bicycle with a large bag attached to the back, moving towards the viewer. The scene is lit by the warm, yellowish glow of streetlights and the white headlights of the vehicles, creating a dramatic interplay of light and shadow. A semi-transparent dark box containing white text is overlaid on the right side of the image.

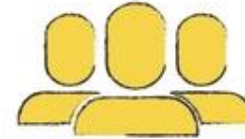
We work with businesses to help them address and identify environmental and social risks and opportunities while equipping them to their story and reveal their impact along the way. Throughout the process, businesses build their internal capacity and learn to foster partnerships with their communities.

WHO WE ARE



The dandelion is resilient, flexible and nurturing; a metaphor for modern day leadership in an ever-changing environment.

Who We Work With



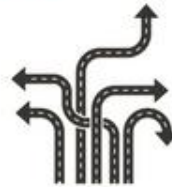
BUSINESSES AND COMMUNITIES

Purpose



To create local leaders and identify systematic solutions

Approach



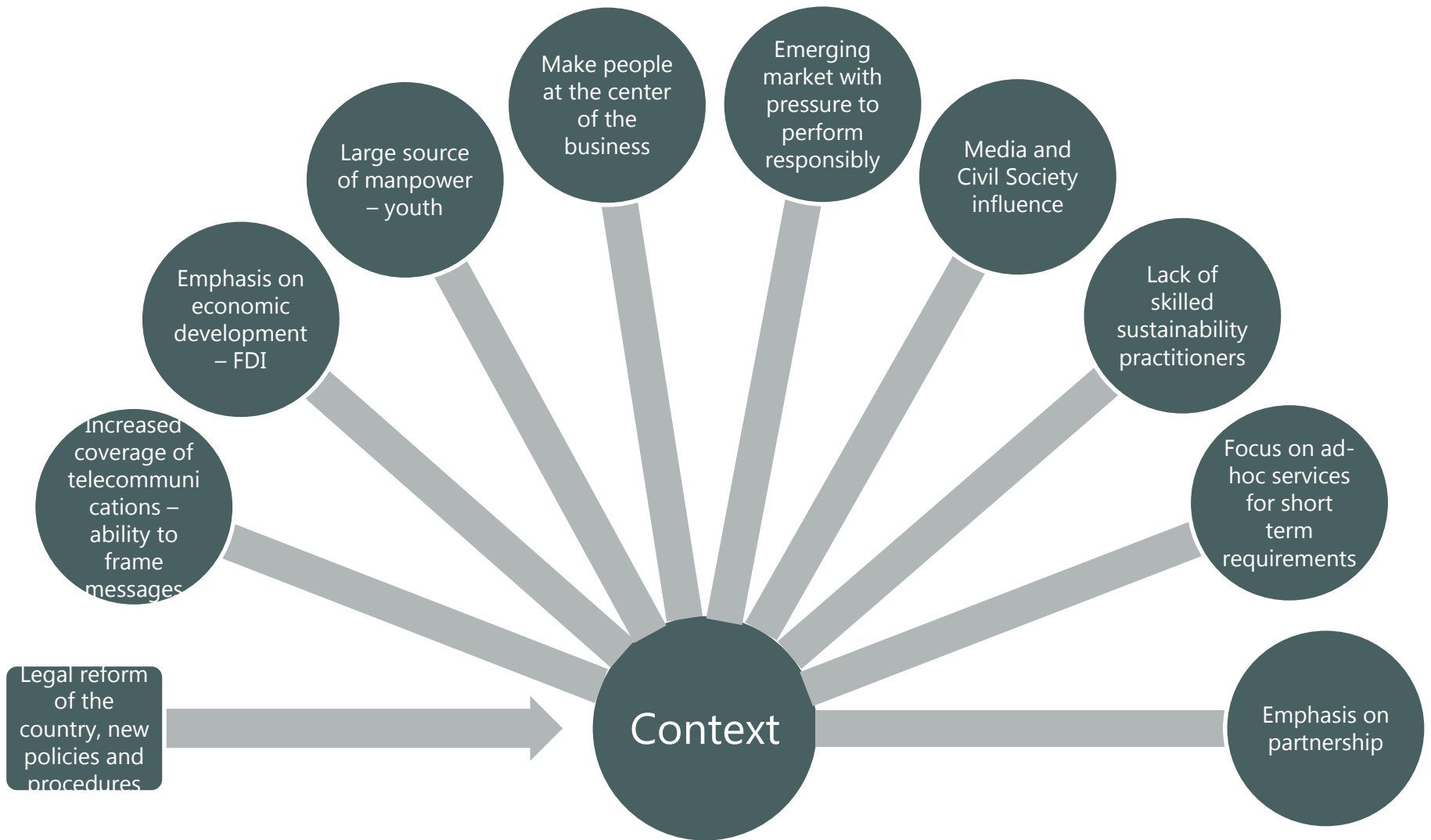
To increase internal capacity, mitigate and manage environmental and social risk/impact, monitor effectiveness, report and disclose progress

Impact



To build trust between clients and their community partners, develop partnerships and strengthen transparency

The Market



Problems









An aerial photograph of a green roof covered in dense, vibrant green vegetation. Several blue pipes are visible, running across the roof surface. A semi-transparent grey rectangular box is centered over the image, containing the text "What are the Opportunities?".

What are the Opportunities?



Improved understanding and awareness of sustainability resulting in unified approach



Strengthened local capacity to deliver change in a systematic manner



Direction, quality, and reach of sustainability encourages cross sector partnerships and sustainable project designs.

Insights

